

Usefulness and safety of the GuideLiner catheter to enhance intubation and support of guide catheters: insights from the Twente GuideLiner registry

Frits H.A.F. de Man¹, MD PhD; Kenneth Tandjung¹, MD; Marc Hartmann¹, MD, PhD; K. Gert van Houwelingen¹, MD; Martin G. Stoel¹, MD; Hans W. Louwerenburg¹, MD; Mounir W.Z. Basalus¹, MD; Hanim Sen¹, MD; Marije M. Löwik¹, PhD; Clemens von Birgelen^{1,2*}, MD, PhD

1. Department of Cardiology, Thoraxcentrum Twente, Enschede, The Netherlands; 2. MIRA - Institute for Biomedical Technology and Technical Medicine, University of Twente, Enschede, The Netherlands

KEYWORDS

- angiography
- bypass graft
- complex lesions
- coronary artery disease
- drug-eluting stents

Abstract

Aims: Optimal ostial seating and adequate back-up of guide catheters are required for challenging percutaneous coronary interventions (PCI). The GuideLiner™ (GL) (Vascular Solutions Inc., Minneapolis, MN, USA) is a guide catheter extension system that provides active back-up support by deep coronary intubation. We aimed to assess feasibility and safety of GL-use in routine clinical practice.

Methods and results: We prospectively recorded patient and procedural details, technical success, and in-hospital outcome of 65 consecutive patients undergoing “5-in-6” Fr GL-facilitated PCI of 70 target vessels. The GL was mainly used for PCI of complex coronary lesions: 97% (68/70) had American Heart Association/American College of Cardiology (AHA/ACC) lesion types B2/C; 53% (37/70) were distally located; and 23% (17/70) were heavily calcified. Indications were to increase back-up of the guide and facilitate stent delivery (59%; 41/70), achievement of coaxial alignment of the guide catheter (29%; 20/70), and selective contrast injections (13%; 9/70). Device success rate was 93% (65/70). There were no major complications and two minor complications managed without clinical sequelae: one air embolism and one stent dislodgement.

Conclusions: GL-use resulted in increased back-up and guide catheter alignment for stent delivery in unfavourable tortuous coronary anatomies and complex, heavily calcified, and often distally located lesions, which otherwise may have been considered unsuitable for PCI. Procedural success rate was high and there were no major complications.

*Corresponding author: Thoraxcentrum Twente, Department of Cardiology, Haaksbergerstraat 55, 7513 ER Enschede, The Netherlands. E-mail: c.vonbirgelen@mst.nl

Abbreviations

ACS	acute coronary syndrome
CK	creatin kinase
CTO	chronic total occlusion
DES	drug-eluting stents
GEA	gastroepiploic artery
GL	GuideLiner
LAD	left anterior descending coronary artery
LCX	left circumflex coronary artery
LM	left main
NSTEMI	non-ST-elevation myocardial infarction
PCI	percutaneous coronary intervention
STEMI	ST-elevation myocardial infarction
RCA	right coronary artery
UAP	unstable angina pectoris

Introduction

Despite the advancements made in percutaneous coronary interventions, the interventional cardiologist nowadays has to deal with an increasing complexity of procedures. A good back-up of the guide catheter is essential to advance guidewires and balloons, and to deliver stents. Support of the guide can be increased by use of extra back-up guides and larger guide dimensions. In addition, the stability of the guide can be improved by advancing a buddy wire, and use of stiffer guidewires or anchoring balloons^{1,2}. Another way to increase back-up support is deep intubation of the guide^{3,4}. There is, however, a considerable risk of dissecting the vessel. Introduction of guide catheter extension systems, in which a long guide catheter with a flexible tip is advanced through the mother guide, has further refined this concept⁵⁻⁷. Besides the improvement in back-up support, the use of guide catheter extensions provides selective visualisation of the target vessel, improves the stability of the guide and allows coaxial alignment of the guide.

There are three systems available: the Heartrail® II catheter (Terumo Corp., Tokyo, Japan), the Proxis™ device (St Jude Medical, St Paul, MN, USA) and the GuideLiner™ catheter (Vascular Solutions Inc., Minneapolis, MN, USA). The Heartrail® II catheter and Proxis™ device are 120 cm catheters that are introduced into the mother guide by removing the Y-connector⁶⁻⁹. The GuideLiner (GL) catheter (**Figure 1**) is a novel rapid exchange guide catheter extension system that provides active guide support by its 20 cm-long flexible tubular end, which can be deeply advanced into target vessels¹⁰⁻¹⁸. Its handling is particularly easy, as it does not require disconnection of the haemostatic valve at the proximal end of the guide catheter and is compatible with standard 180 cm-long guidewires. Its soft distal tip promises a low risk of dissecting vessels compared to the deep-seating of regular guide catheters.

So far, only a limited number of reports and case series have been published on the GL guide catheter extension¹⁰⁻¹⁸. Mamas et al reported a case series of 13 complex coronary interventions, performed via the radial artery with the “5-in-6” Fr GL system¹⁰. Although their success rate was high, the main limitation encountered was stent damage upon advancement of the stent across the metallic collar of the GL (two out of 32 stents)¹⁰. Recently, Luna et al published their experience with the GL catheter in a series of 21 patients¹⁵. In their study, a transfemoral approach and 7 Fr guide catheters were used in the majority of the cases with a procedural success rate of 90%. Pressure dampening was seen in 57% of their patients, contributing to three out of four unsuccessful cases. There was one major complication in the series reported by Luna et al, which was a flow-limiting dissection in the proximal left anterior descending coronary artery (LAD) but they noted no case of stent damage¹⁵. The purpose of the present Twente GuideLiner registry was to assess feasibility and safety of use of the “5-in-6” Fr GL guide catheter extension system during routine, clinical PCI procedures as performed at Thoraxcentrum Twente, a high-volume PCI centre located in Enschede, The Netherlands.

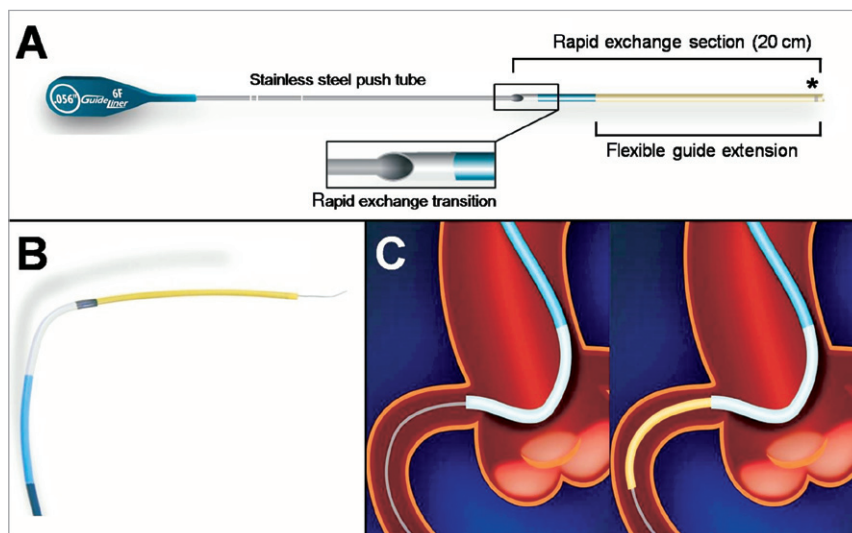


Figure 1. Schematic presentation of the GuideLiner catheter.

Methods

STUDY POPULATION

Between November 2010 and July 2011, we prospectively collected data from a consecutive series of 65 patients, in whom the GL was applied to facilitate routine PCI. The patients had a background of stable or unstable angina pectoris, or presented with an acute myocardial infarction.

INTERVENTIONAL PROCEDURES

A team of five interventional cardiologists performed the PCI procedures; each of them had performed PCI for more than five years (250-500 PCI procedures per operator annually; total PCI experience of 4,000 or more per operator). PCI procedures were performed according to standard clinical protocols via the femoral or radial routes, using 6 Fr guide catheters as a standard. All patients received a bolus of unfractionated heparin (5,000 IE or 70-100 IE/kg). Prior to PCI, all patients received adequate loading doses of acetylsalicylic acid (300 mg) and clopidogrel (300-600 mg), if not pretreated. During the procedure, an intracoronary bolus of nitrates was administered. The choice of interventional approaches, devices, and techniques was left at the operators' discretion, considering current clinical protocols and guidelines. Following PCI, clopidogrel was prescribed for one year (75 mg once daily [o.d.] in addition to life-long treatment with acetylsalicylic acid [at least 100 mg o.d.]).

THE GUIDELINER CATHETER AND ITS USE

The GL (Vascular Solutions, Minneapolis, MN, USA) consists of a flexible, 20 cm, straight, flexible, soft-tipped extension tube that is connected via a metal collar to a thin 115 cm-long stainless steel shaft (**Figure 1A** and **Figure 1B**). The extension tube has a silicon coating for lubricity. The procedure starts by positioning the mother guide and advancing the guidewire across the target lesion. Then the GL is advanced over the guidewire through the haemostatic valve of the Y-adapter (handling comparable to regular balloons) to intubate the target coronary artery or bypass graft (**Figure 1C**). The GL reduces the inner diameter of the mother guide by approximately 1 Fr, but it does not lengthen the guide outside the patient. When the GL is in place, balloons and stents can be delivered over the same initial guidewire. The GL is available in sizes of 6 Fr, 7 Fr, and 8 Fr. In this study, only 6 Fr GL were used (also called the "5-in-6" Fr system), which has an internal diameter of 0.056" (1.422 mm). Notably, the use in vessels <2.5 mm is discouraged by the manufacturer. Bifurcation lesions in our study were treated as follows: two wires were advanced through the guide. Then, the GL was advanced over both wires simultaneously. Provisional stenting was the strategy of choice. In cases where a kissing balloon technique was demanded, a wire exchange was performed followed by balloon dilation of the side branch through the stent struts. Before the final kissing balloon inflation could be performed, the GL had to be removed.

STUDY PARAMETERS AND DATA ACQUISITION

To assess the usefulness (feasibility and safety) of the GL in clinical practice, we prospectively recorded various procedural data and clinical

details on the in-hospital outcome of a consecutive series of 65 patients, who underwent PCI with the use of the GL. Patient demographics, indication for GL use, angiographic and procedural details including technical success, and all complications were recorded. Quantitative coronary angiography (QCA) was used to determine the intubation depth of the GL catheter. Procedural success was defined as the achievement of <20% diameter stenosis with TIMI 3 flow in the target vessel. Routine peri-interventional assessment of cardiac biomarkers was performed to screen for PCI-induced myocardial necrosis up to 24 hours after PCI or until the highest value of creatine kinase (CK) was measured. Peri-PCI myocardial infarction was defined as two times the upper reference limit of CK, confirmed by significant elevation of other specific biomarkers (MB-fraction of CK or troponin).

STATISTICAL ANALYSIS

Values are expressed as mean±SD. Comparison of continuous variables was performed with the Student's t-test. Categorical variables are presented as numbers or percentages and were tested with the chi-square test or Fisher's exact test. A p-value <0.05 was considered statistically significant. Statistical analysis was performed with SPSS version 15.0 for Windows (SPSS Inc., Chicago, IL, USA).

Results

PATIENT POPULATION AND LESION CHARACTERISTICS

The demographic characteristics of the study population are presented in **Table 1**. The majority of patients were male (74%), and the mean age was 67±13 years. Target lesions were relatively complex as is shown in **Table 2**. Most lesions (97%) had American Heart Association/American College of Cardiology (AHA/ACC) lesion types B2 or C, with more than half of them being located in distal vessel segments. A total of 90% of lesions was classified as being calcified: 67% mild to moderately and 23% heavily calcified. Mean lesion length was 38±26 mm, which is indicative of long lesions.

Table 1. Demographic characteristics of study population.

Age (years)	67±13
Male gender	74% (48/65)
Hypertension	57% (37/61)
Hypercholesterolaemia	54% (35/61)
Diabetes	25% (16/65)
Current smoking	22% (14/61)
Family history of CAD	28% (18/61)
Prior myocardial infarction	32% (21/65)
Prior PCI	26% (17/65)
Prior CABG	26% (17/65)
Indication for PCI	
ST-elevation MI	12% (8/65)
Non-ST-elevation MI	20% (13/65)
Unstable angina	6% (4/65)
Stable angina	62% (40/65)
CAD: coronary artery disease; PCI: percutaneous coronary intervention; CABG: coronary artery bypass graft; MI: myocardial infarction	

Table 2. Target vessels and lesion characteristics.

Target vessels	
Left anterior descending artery	17/70 (24%)
Left circumflex artery	20/70 (29%)
Right coronary artery	23/70 (33%)
Vein graft	10/70 (14%)
Target lesions	
Type B2/C lesion	68/70 (97%)
Distal location	37/70 (53%)
Severe calcification	16/70 (23%)
Chronic total occlusion	12/70 (17%)
Reference vessel diameter (mm)	3.0±0.5
Diameter stenosis (%)	89±13
Lesion length (mm)	38±26

INDICATION FOR GL USE AND PROCEDURAL DETAILS

All procedures were carried out with the “5-in-6” Fr GL device. As shown in **Figure 3**, the primary indications for GL use were to increase back-up of the guide catheter, in general to facilitate stent delivery (59%), and to improve alignment of the guide catheter (29%) (**Table 3**). In a few patients (13%), the GL was used for selective contrast injection, predominantly because of dominant left coronary artery (LCA) and/or renal impairment. There were differences between the application in right coronary artery

Table 3. Procedural details, success, failures, and complications.

Procedural details	
Radial access	22/65 (34%)
Multivessel procedure	19/65 (29%)
Procedural time (min)	79±43
Volume of contrast (ml)	220±118
Total length of stents implanted (mm)	41±29
Number of stents implanted	1.8±1.2
Depth of GuideLiner intubation (mm)	33±21
Primary indication for GuideLiner use	
Improvement of back-up and facilitated stent delivery	41/70 (59%)
More selective contrast injection	9/70 (13%)
Improvement of alignment of the guide	20/70 (29%)
Success, failures, and complications	
Device success	65/70 (93%)
Procedural success	64/70 (91%)
Major complications	0/70
Minor complications	2/70 (3%)
Air embolism	1/70 (1%)
Stent dislodgement	1/70 (1%)

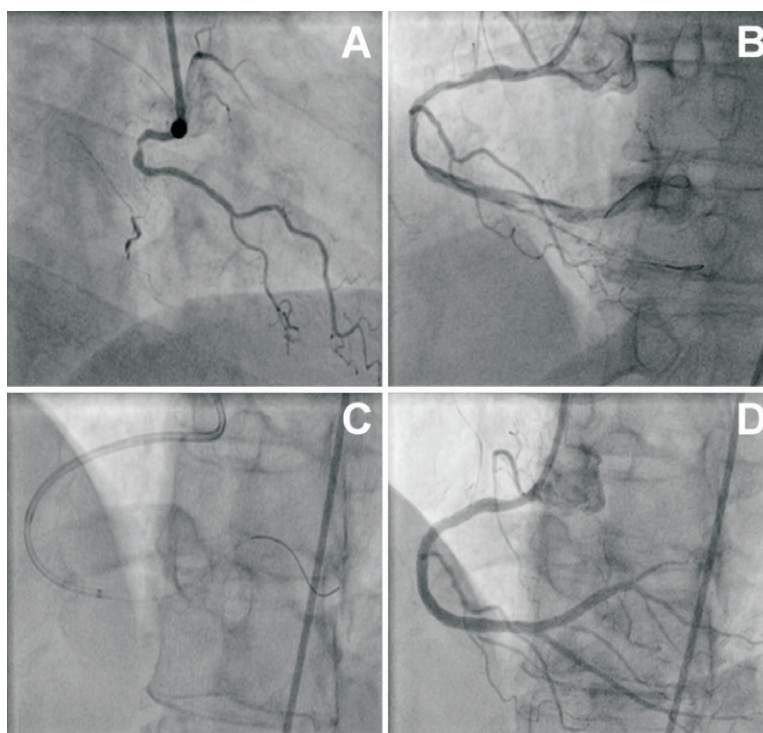


Figure 2. Angiography of a chronically occluded RCA in a 55-year-old female patient (A). Wire crossing was achieved using a pilot 50 wire. After subsequent passage and dilation with low profile balloons, the flow is partially restored and a long dissection can be noted that extends into the postero-lateral branch (B). Passage of a stent was unsuccessful due to marked resistance in the distal segment of the vessel. With the help of an anchoring balloon, the GuideLiner catheter was deeply intubated over the guidewire (C). Then, several drug-eluting stents were successfully delivered and postdilated, with a good final angiographic result (D).

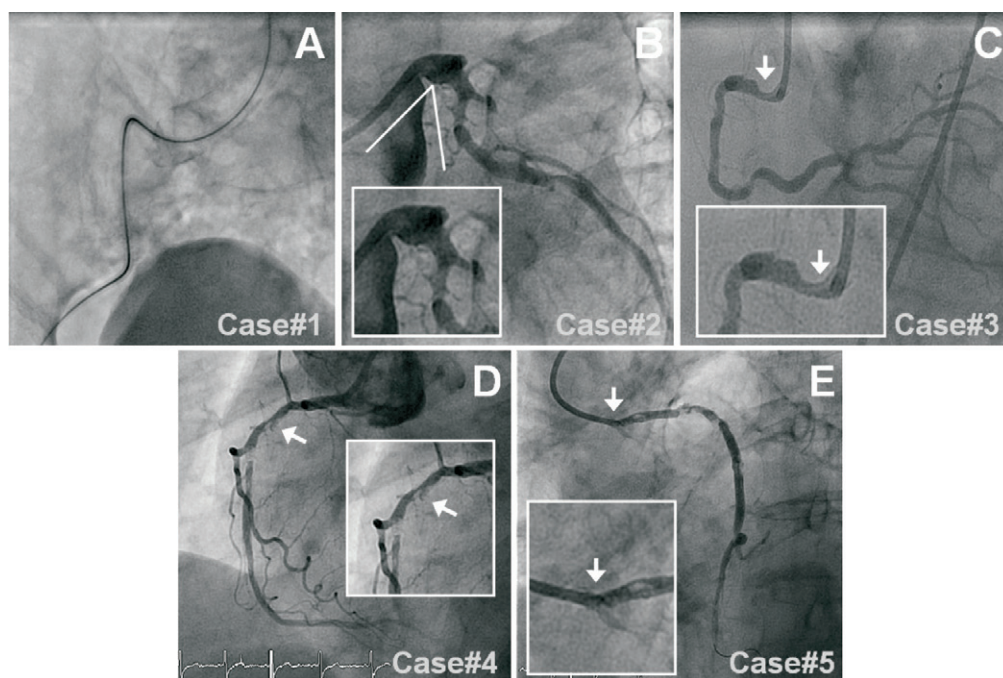


Figure 3. Angiographic overview of the device failures: Case #1) The first case was a 79-year-old male patient with an acute inferior MI. The target lesion was located in a diffusely diseased, heavily calcified RCA. The GL could not be advanced through the guide catheter because of severe iliac tortuosity (A), but procedural success was accomplished by use of a 3DRC guide catheter, two guidewires, and a distal anchoring balloon. Case #2) The second case was a long and calcified proximal LCX lesion, located behind a sharp angle between the LM and LCX that prevented GL intubation (B). Case #3) The third case was a 56-year-old subject who underwent an elective PCI of a diffusely diseased RCA. The GL catheter could not be intubated in the vessel due to a proximal lesion (C). The procedure was finished successfully with an AL1 guide. Case #4) In the fourth patient, the target lesion was a heavily calcified long mid RCA lesion (D). The proximal RCA segment was diffusely diseased, which prevented deep GL intubation (a depth of only 5 mm) and resulted in insufficient support; however, this problem was solved by rotablation of the ostium. Case #5) The fifth case was a vital 87-year-old female with stable angina due to a severely calcified proximal lesion in an 18-year-old saphenous vein graft. An AL2 guide catheter was positioned in the ostium and a flexible guidewire with hydrophilic coating was advanced across the lesion. Use of the GL was attempted to increase back-up support but the GL could not be advanced into the ostium (E), and the PCI procedure was terminated as a second guidewire could not pass the ostium either. We discussed the patient with our thoracic surgeons, who then performed an elective repeat bypass surgery with an uneventful clinical course.

(RCA) and LCA interventions. In the LCA, the GL catheter was used regularly to improve the alignment of the guide or enhance selective contrast injections, whereas its use in RCA interventions was mainly to increase catheter back-up ($p=0.024$). An example is shown in **Figure 2**.

A 6 Fr guide catheter was used in all subjects, while radial access was chosen in one third of cases. Multivessel procedures were performed in almost one third of the patients, and there were 17% of chronic total occlusions. Of all 126 stents implanted, 123 (98%) were third-generation drug-eluting stents (DES). In this registry, we noted a single stent that was damaged upon advancement across the metallic collar of the GL; damage to the (secondary) guidewire tip when passing the metallic collar of the GL occurred slightly more often (4/70; 6%).

DEVICE SUCCESS AND DEVICE FAILURE

The overall success rate of the GL was 93%. The average depth to which the GL was intubated in the proximal target vessels was 33 ± 22 mm (range: 0 to 106 mm), however, these generally deep intubations did not cause any coronary dissections. The rate of procedural success of the transradial and transfemoral access routes was 95.5%

and 88.4% ($p=0.35$), respectively, but the power of the study was insufficient to draw sound conclusions from this comparison. There were five device failures (5/70; 7%), which are illustrated in **Figure 3**.

COMPLICATIONS

We noted no major complications or coronary dissections. There were two minor complications, which are outlined below. In the first case, during PCI of a diffusely diseased RCA in a 53-year-old male, the GL was deeply advanced (61 mm intubation depth) to increase back-up support and to pass a balloon catheter across the heavily calcified distal RCA stenosis. During this manoeuvre, some air embolism was noted as a result of insufficient venting of the wedged GL, which caused a brief phase of stasis of coronary flow that was rapidly resolved. The second minor complication occurred during PCI of a long mid lesion in an RCA with “shepherd’s crook” anatomy. After predilatation and stenting of the mid RCA, an attempt to advance a second stent through the first one was made, which turned out to be extremely difficult. To increase support, the GL was advanced over both guidewires and the second stent balloon

system (stent still undeployed), which led to dislodgement of the stent from the balloon. Eventually the dislodged stent was crushed behind a third stent and was postdilated with high balloon pressures, leading to a good final angiographic result with an uneventful clinical course until the eight-month follow-up.

Discussion

Good back-up of the guide catheter is crucial for both wiring and equipment delivery. The development of guide catheter extension systems has further expanded the therapeutic arsenal of the interventional cardiologist⁵⁻¹². Intubation of the guide catheter extension system into the target vessel provides enhancement of equipment delivery in challenging coronary lesions, and facilitates engagement in case of difficult takeoff of the coronary ostium. Takahashi et al demonstrated that a guide catheter extension system provides a substantial improvement in back-up support⁵. The support was directly related to the depth of intubation. For example, insertion of a 5 Fr guide catheter 15 mm into a 6 Fr catheter doubled the back-up support. The guide catheter extension system may be used as a tool for deeper intubation of the guide, referred to as “rail-roading”, as was described in detail by Farooq et al¹⁸. Its use in graft interventions is well recognised as aiding graft cannulation and enhancing the stability of the guide in the graft ostium. Further back-up may be achieved by advancing the extension catheter, thereby allowing the guide to back out and down until it rests on the aortic valve or contralateral aortic wall (Swan-neck manoeuvre)¹⁸. And finally, guide catheter extension systems can be used as an aspiration device¹⁸.

The Twente GuideLiner registry reports on a consecutive series of GL applications in 65 patients, treating 70 target vessels with implantation of 126 stents (98% being third-generation DES). So far, this is the largest registry on the use of the GL in routine daily practice. Demographics and clinical characteristics of the study population are similar to previous all-comers stent studies and our general PCI population¹⁹⁻²⁵. However, lesion characteristics differed a lot from the general patient population as the majority of target lesions were long

and complex: all but two target lesions (97%) were classified as lesion type B2 or C with more than half of them being located distally, and the vast majority being at least moderately calcified.

During the first months, the GL was used as a bailout device in challenging cases, when the “old familiar tricks” (e.g., deep-seating manoeuvres or use of buddy wires) had failed. However, after becoming more familiar with the device, we switched to a more upfront use in difficult anatomical situations. In our present series, the main indication for GL use was to improve guide support to facilitate stent delivery (59%). An illustration is shown in **Figure 2**. However, in one third of the cases the GL was used to improve coaxial alignment of the guide catheter in anatomical situations with an abnormal takeoff of the target vessel (e.g., shepherd’s crook-shaped proximal RCA) or a vertical takeoff of either RCA or left main stem. In particular, a vertical offspring of the left main stem, as may be seen in young lean patients or patients with pulmonary emphysema, bears an increased risk of dissecting the left main stem with a guide catheter. Gentle intubation of the GL substantially facilitated the intervention in such patients (**Figure 4**). In a small number of patients, the GL was used to perform selective contrast injections for a better visualisation of the vessel of interest with smaller amounts of contrast; this indication for GL use may be considered in patients with large calibre vessels, such as a dominant left coronary artery, and an impaired renal function, or if an adequate visualisation cannot be achieved by other means²⁶.

The GL may also be useful to facilitate demanding diagnostic coronary angiographies, which has not been described so far and was beyond the scope of our registry of GL use in PCI patients. Nevertheless, we would not like to withhold the information that our group also used the GL in several demanding cases of diagnostic angiographic visualisation of bypass grafts. **Figure 5** shows an example of a gastroepiploic artery (GEA) graft, visualised both with and without use of a GL. It should be emphasised that in case of coronary angiography, the operator should refrain from the use of intracoronary wires and devices as much as possible. However, there are

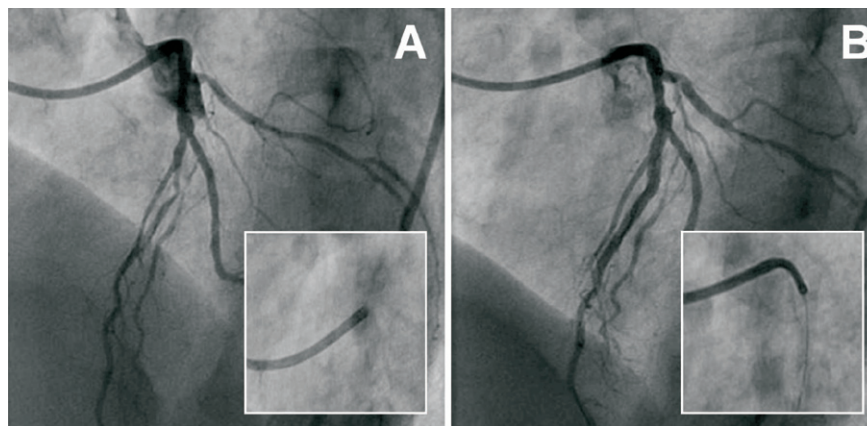


Figure 4. Angiographic overview of a subject with a vertical offspring of the left main (A and B). The GuideLiner catheter was used for coaxial alignment of the guiding catheter; providing gentle intubation in the LM and good support to treat the LAD lesion.

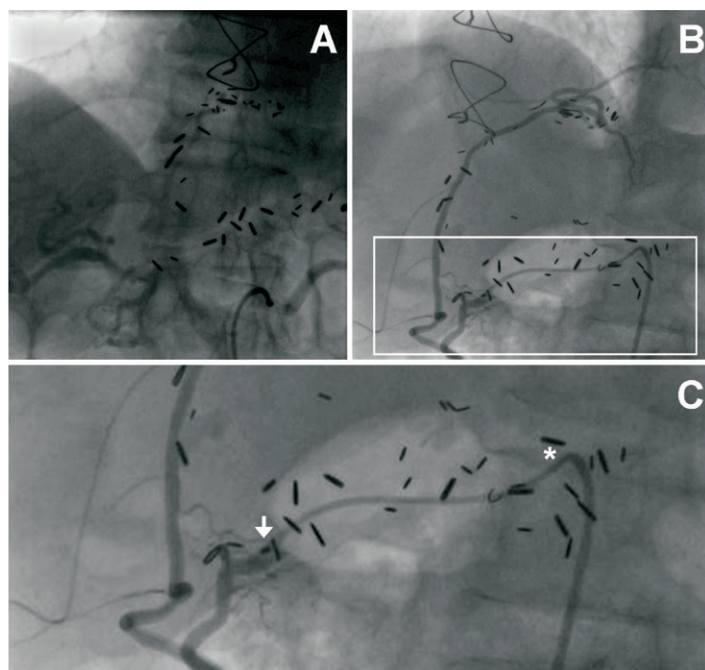


Figure 5. Visualisation of a gastroepiploic artery (GEA) graft in a 66-year-old male patient. Panel A shows vague images of the GEA graft, obtained during routine angiography two years earlier. Panel B illustrates the difference in image quality, obtained recently with the use of the GuideLiner (GL) catheter. The arrow in Panel C is pointed at the tip of the GL catheter.

circumstances in which a graft cannot be properly visualised. Instead of accepting a poor visualisation, the use of a guide catheter extension system can be considered in order to achieve conclusive angiographic imaging. It should be used by an interventional cardiologist with great care, and maximum effort should be taken to ensure that such manoeuvres do not give rise to a coronary dissection.

SUCCESS RATE, SHORTCOMINGS, AND POTENTIAL PROCEDURAL RISK

The success rate of the GL was 93% in our study, which is in agreement with previously reported smaller case series^{10,15,17,18}. Stent damage at the site of the metallic collar of the GL occurred in one out of 126 stents implanted, which was a drug-eluting stent with a nominal diameter of 3.5 mm. Others have reported a higher rate of stent damage (6%) due to the collar of the GL catheter¹⁰. Therefore, we discourage the use of stents with a nominal diameter of 4 mm or more through a “5-in-6” Fr GL catheter. Murphy et al recently reported an uncommon case of balloon damage at the site of the metallic collar¹⁶. In addition, secondary (buddy) guidewires can be damaged upon advancement when the GL is in place, as reported in our present study. The “5-in-6” Fr GL catheter permits the passage of virtually all regular balloon catheters, contemporary optical coherence tomography (OCT) catheters, and coronary stents up to a nominal diameter of 3.5 mm. However, it does not allow the use of larger devices such as thrombectomy catheters, some intravascular ultrasound (IVUS) probes, and simultaneous kissing balloon inflations.

Although the GL turned out to be generally beneficial with a relatively low rate of device failure, we identified some scenar-

ios, in which the usefulness of the GL may be questionable. Firstly, a difficult access due to iliac tortuosity may impede the advancement of the GL through the mother guide, as was seen in one of our patients. Secondly, the proximal part of the target vessel should be suitable for intubation of the GL catheter; therefore, ostial/very proximal lesions or sharp angles of coronary arteries may lead to device failure, as was noted in the majority of our cases with device failure.

In general, use of the GL turned out to be safe. No major complications were noted, but there were two minor complications with favourable outcomes and an otherwise uneventful clinical course. There was one case of air embolism due to insufficient venting. In the second case, a stent was dislodged from the balloon by the tip of the GL when advancing the GL over a stent balloon system. Both complications could have been avoided, if more care had been taken and the instructions of the manufacturer had been followed. Luna et al¹⁵ reported a substantially higher number of cases with pressure dampening (57%) during engagement of the GL catheter; however, dissimilar to our study, they used a “6-in-7” Fr system in the majority of cases.

HOW TO USE THE GUIDELINER AND HOW TO AVOID COMPLICATIONS

Several considerations can be mentioned in order to choose or refrain from the use of a guide catheter extension. If more back-up of the guide catheter is required, the first step can be the use of buddy wires, extra stiff wires, or buddy balloons. However, if these measures fail, a GL catheter may be considered, which allows the mother guide and

wires to be left in place. The operator should, however, be convinced that the proximal part of the target vessel is suitable for intubation. If the lesion extends to the proximal segment or if there is sharp angulation, the use of a guide catheter extension system is generally not recommended. Alternatively, the proximal segment may be stented first, followed by gentle intubation of the GL catheter and treatment of the distal segment (so-called proximal-to-distal stenting). However, care should be taken to avoid deformation or longitudinal compression of a proximally implanted stent^{27,28}. If there is a problem with coaxial alignment of the available guide catheters, the operator should estimate the risk of performing the procedure with a suboptimal position of the tip of the guide (in case of a simple proximal lesion one may continue). However, if substantial back-up is required, it appears wise to use a guide catheter extension. This decreases the risk of guide-induced dissections and improves the back-up of the mother guide. If the patient has an impaired renal function and the operator expects to use large amounts of contrast (e.g., in a dominant left coronary artery system), a guide catheter extension system may be considered as a valuable first choice. And finally, if the operator intends to treat a bifurcation lesion, it should be realised that a “5-in-6” Fr system does not allow the simultaneous use of two balloons. Therefore, a choice should be made to use a larger guide catheter extension system (“6-in-7” Fr system or Proxis™ device), remove the guide catheter extension system before the kissing procedure, or refrain from its use and adhere to usual practice.

A WORD OF CAUTION

Intubation of the GL bears the risk of causing a dissection in a proximal coronary artery and should be performed carefully. If resistance is encountered when advancing the device, the GL can be retrieved into the mother guide and then re-advanced over a balloon catheter (to improve alignment) into the target vessel¹⁷. After advancing the GL into the vessel, the operator should check the coronary pressure waves and verify the presence of adequate, preserved antegrade coronary flow. Since use of the GL reduces the size of the working lumen, there is an increased risk of air embolism, which can be diminished by slow advancement and withdrawal of the equipment; time should then be taken to carefully vent the system. A limitation of the GL device is the metallic collar located at the entrance of the extension tube. In case of resistance while advancing the stent, the location of the stent in relation to the metallic collar of the GL should be checked and the stent should be inspected for damage. If the collar is located at a bend in the catheter, the GL should be retrieved gently into a straight section of the mother guide in order to allow more coaxial alignment of the collar¹⁷. The use of more than one guidewire in combination with a relatively large size of the stent delivery system may sometimes render stent passage through the collar of the GL difficult and occasionally impossible. Factors such as operator awareness, experience, number and type of guidewires, size of the stent, vascular anatomy, the shape of the guide catheter, and indication for GL use may have an effect on the incidence of this problem, which differs between case series¹⁷.

LIMITATIONS

The present registry of a consecutive series of PCI patients treated with the use of the “5-in-6” Fr GL provides some “real-life” insight into efficacy, limitations, and the potential risk of this device. Although our patient population is larger than that of all previously reported cases and patient series altogether¹⁰⁻¹⁸ the population is still relatively small. In addition, due to well-known limitations inherent to registries, this single centre registry cannot provide the scientific level of insight that might be obtained from a randomised study. During the course of this registry, use of highly deliverable third-generation DES in most patients was our standard of care²⁹, which could have affected our results. We cannot exclude that in cases with upfront use of the GL, a standard guide catheter or other manoeuvres and tricks (e.g., deep intubations or buddy wires) could also have led to procedural success.

CONCLUSIONS

Use of the GuideLiner catheter resulted in an increased back-up support and guide catheter alignment for stent delivery in the presence of unfavourable tortuous coronary anatomies and in complex, heavily calcified, and often distally located lesions, which otherwise may have been considered unsuitable for PCI. The procedural success rate of the GL was high without major complications.

FUNDING

This investigator-initiated study was performed without specific funding. The research department received educational and/or research grants in the past and has participated in clinical studies funded by Abbott Vascular, Biosensors, Biotronik, Boston Scientific, Cordis, and Medtronic.

Conflict of interest statement

C. von Birgelen is a consultant to and has received lecture fees or travel expenses from Abbott, Medtronic, and Boston Scientific and has received a speaker’s honorarium from Merck Sharp & Dohme. All of the other authors have no conflict of interest to declare.

References

- Burzotta F, Trani C, Mazzari MA, Mongiardo R, Rebuffi AG, Buffon A, Niccoli G, Biondi-Zoccai G, Romagnoli E, Ramazzotti V, Schiavoni G, Crea F. Use of a second buddy wire during percutaneous coronary interventions: A simple solution for some challenging situations. *J Invasive Cardiol.* 2005;17:171-174.
- Hirokami M, Saito S, Muto H. Anchoring technique to improve guiding catheter support in coronary angioplasty of chronic total occlusions. *Catheter Cardiovasc Interv.* 2006;67:366-371.
- Peels HO, van Boven AJ, den Heijer P, Tio RA, Lie KI, Crijns HJ. Deep Seating of six French guiding catheters for delivery of new Palmaz-Schatz stents. *Catheter Cardiovasc Interv.* 1996;38:210-213.
- von Sohsten R, Oz R, Marone G, McCormick DJ. Deep intubation of 6F guiding catheters for transradial coronary interventions. *J Invasive Cardiol.* 1998;10:198-202.

5. Takahashi S, Saito S, Takanak S, Miyashita Y, Shiono T, Arai F, Domae H, Satake S, Itoh T. New method to increase a back-up support of a 6 French guiding coronary catheter. *Catheter Cardiovasc Interv.* 2004;63:452-456.
6. Mamas MA, Fath-Ordoubadi F, Fraser D. Successful use of the Heartrail II catheter as a stent delivery catheter following failure of conventional techniques. *Catheter Cardiovasc Interv.* 2008;71:358-363.
7. Mamas MA, Eichhöfer J, Hendry C, El-Omar M, Clarke B, Neyses L, Fath-Ordoubadi F, Fraser D. Use of the Heartrail II catheter as a distal stent delivery device; an extended case series. *EuroIntervention.* 2009;5:265-271.17.
8. Brilakis ES, Banerjee S. Novel uses of the Proxis embolic protection catheter. *Catheter Cardiovasc Interv.* 2009;74:438-445.
9. Banerjee S, Brilakis ES. Use of the Proxis embolic protection device for guide anchoring and stent delivery during complex saphenous vein graft interventions. *Cardiovasc Revasc Med.* 2009;10:183-187.
10. Mamas MA, Fath-Ordoubadi F, Fraser DG. Distal stent delivery with GuideLiner catheter: first in man experience. *Catheter Cardiovasc Interv.* 2010;76:102-111.
11. Kumar S, Gorog DA, Secco GG, Di Mario C, Kukreja N. The GuideLiner "child" catheter for percutaneous coronary intervention - early clinical experience. *J Invasive Cardiol.* 2010;22:495-498.
12. Rao U, Gorog D, Syzgula J, Kumar S, Stone C, Kukreja N. The GuideLiner "child" catheter. *EuroIntervention.* 2010;6:277-279.
13. Hanna EB, Dasari TW, Hennebry TA. Use of the GuideLiner catheter for the treatment of a bifurcational total occlusion of the native left anterior descending artery through a tortuous composite venous graft. *J Invasive Cardiol.* 2011;23:E40-2.
14. Wiper A, Mamas M, El-Omar M. Use of the GuideLiner catheter in facilitating coronary and graft intervention. *Cardiovasc Revasc Med.* 2011;12:68.e5-7.
15. Luna M, Papayannis A, Holper EM, Banerjee S, Brilakis ES. Transfemoral use of the guideLiner catheter in complex coronary and bypass graft interventions. *Catheter Cardiovasc Interv.* 2011 July 29. [Epub ahead of print].
16. Murphy JC, Spence MS. Guideliner® catheter-Friend or foe? *Catheter Cardiovasc Interv.* 2011 July 29. [Epub ahead of print].
17. Cola C, Miranda F, Vaquerizo B, Fantuzzi A, Bruguera J. The Guideliner™ catheter for stent delivery in difficult cases: tips and tricks. *J Interv Cardiol.* 2011;24:450-61.
18. Farooq V, Mamas MA, Fath-Ordoubadi F, Fraser DG. The use of a guide catheter extension system as an aid during transradial percutaneous coronary intervention of coronary artery bypass grafts. *Catheter Cardiovasc Interv.* 2011;78:847-63.
19. Tandjung K, Basalus MW, Muurman E, Louwerenburg HW, van Houwelingen KG, Stoel MG, de Man FH, Jansen H, Huisman J, Linssen GC, Droste HT, Nienhuis MB, von Birgelen C. Incidence of periprocedural myocardial infarction following stent deployment: Comparison between first- and second-generation drug-eluting stents. *Catheter Cardiovasc Interv.* 2011 Nov 22. [Epub ahead of print]
20. Stone GW, Midei M, Newman W, Sanz M, Hermiller JB, Williams J, Farhat N, Caputo R, Xenopoulos N, Applegate R, Gordon P, White RM, Sudhir K, Cutlip DE, Petersen JL; SPIRIT III Investigators. Randomized comparison of everolimus-eluting and paclitaxel-eluting stents: two-year clinical follow-up from the Clinical Evaluation of the Xience V Everolimus Eluting Coronary Stent System in the Treatment of Patients with de novo Native Coronary Artery Lesions (SPIRIT) III trial. *Circulation.* 2009;119:680-686.
21. Windecker S, Remondino A, Eberli FR, Jüni P, Räber L, Wenaweser P, Togni M, Billinger M, Tüller D, Seiler C, Roffi M, Corti R, Sütsch G, Maier W, Lüscher T, Hess OM, Egger M, Meier B. Sirolimus-eluting and paclitaxel-eluting stents for coronary revascularization. *N Engl J Med.* 2005;353:653-62.
22. Serruys PW, Silber S, Garg S, van Geuns RJ, Richardt G, Buszman PE, Kelbæk H, van Boven AJ, Hofma SH, Linke A, Klauss V, Wijns W, Macaya C, Garot P, DiMario C, Manoharan G, Kornowski R, Ischinger T, Bartorelli A, Ronden J, Bressers M, Gobbens P, Negoita M, van Leeuwen F, Windecker S. Comparison of Zotarolimus-Eluting and Everolimus-Eluting Coronary Stents. *N Engl J Med.* 2010;363:136-146.
23. Kedhi E, Joesoef KS, McFadden E, Wassing J, van Mieghem C, Goedhart D, Smits PC. Second-generation everolimus-eluting and paclitaxel-eluting stents in real-life practice (COMPARE): a randomised trial. *Lancet.* 2010;375:201-209.
24. von Birgelen C, Basalus MW, Tandjung K, van Houwelingen KG, Stoel MG, Louwerenburg JH, Linssen GC, Saïd SA, Kleijne MA, Sen H, Löwik MM, van der Palen J, Verhorst PM, de Man FH. A randomized controlled trial in second-generation zotarolimus-eluting Resolute stents versus everolimus-eluting Xience V stents in real-world patients: The TWENTE trial. *J Am Coll Cardiol.* 2012;59:1350-61.
25. Sen H, Tandjung K, Basalus MW, Löwik MM, van Houwelingen GK, Stoel MG, Louwerenburg HW, de Man FH, Linssen GC, Nijhuis R, Nienhuis MB, Verhorst PM, van der Palen J, von Birgelen C. Comparison of eligible non-enrolled patients and the randomised TWENTE trial population treated with Resolute and Xience V drug-eluting stents. *EuroIntervention.* 2012 May 15. [Epub ahead of print].
26. Tunuguntla A, Daneault B, Kirtane AJ. Novel use of the guideLiner catheter to minimize contrast use during PCI in a patient with chronic kidney disease. *Catheter Cardiovasc Interv.* 2011 Nov 22. [Epub ahead of print].
27. Hanratty CG, Walsh SJ. Longitudinal compression: a "new" complication with modern coronary stent platforms-time to think beyond deliverability? *EuroIntervention.* 2011;7:872-7.
28. Williams PD, Mamas MA, Morgan KP, El-Omar M, Clarke B, Bainbridge A, Fath-Ordoubadi F, Fraser DG. Longitudinal stent deformation: a retrospective analysis of frequency and mechanisms. *EuroIntervention.* 2011 Nov 4. [Epub ahead of print].
29. Tandjung K, Basalus MW, Sen H, Jessurun GA, Danse PW, Stoel M, Linssen GC, Derks A, van Loenhout TT, Nienhuis MB, Hautvast RW, von Birgelen C. DURable polymer-based sTent CHallenge of Promus ElemEnt versus ReSolute Integrity (DUTCH PEERS): rationale and study design of a randomized multicenter trial in a Dutch all-comers population. *Am Heart J.* 2012;163:557-62.