

Prognostic impact of cardiac damage staging classification in each aortic stenosis subtype undergoing TAVI

Masaaki Nakase¹, MD; Taishi Okuno¹, MD; Daijiro Tomii¹, MD; Bashir Alaour¹, MD; Fabien Praz¹, MD; Stefan Stortecky¹, MD, MPH; Jonas Lanz¹, MD, MSc; David Reineke², MD; Stephan Windecker¹, MD; Thomas Pilgrim^{1*}, MD, MSc

1. Department of Cardiology, Inselspital, University of Bern, Bern, Switzerland; 2. Department of Cardiovascular Surgery, Inselspital, University of Bern, Bern, Switzerland

M. Nakase and T. Okuno contributed equally to the manuscript.

This paper also includes supplementary data published online at: <https://eurointervention.pcronline.com/doi/10.4244/EIJ-D-23-00590>

KEYWORDS

- imaging modalities
- TAVI
- transthoracic echocardiogram

Abstract

Background: The prognostic value of cardiac damage staging classifications across the haemodynamic spectrum of severe aortic stenosis (AS) remains unknown.

Aims: We aimed to investigate the prognostic impact of cardiac damage staging classifications in patients with high-gradient AS (HG-AS) and low-gradient AS (LG-AS) undergoing transcatheter aortic valve implantation (TAVI).

Methods: In a prospective TAVI registry, five-year mortality was evaluated for early stages of cardiac damage (stage 0, 1, or 2) and advanced stages of cardiac damage (stage 3 or 4) in patients with HG-AS, classical low-flow (LF) LG-AS, LF LG-AS with preserved ejection fraction (pEF), and normal-flow (NF) LG-AS.

Results: Among 2,090 patients undergoing TAVI, 1,045 patients had HG-AS, 337 patients had classical LF LG-AS, 394 patients had LF LG-AS with pEF, and 314 patients had NF LG-AS. The majority of patients with classical LF LG-AS exhibited advanced cardiac damage (73.6%), followed by LF LG-AS with pEF (55.6%), NF LG-AS (51.6%), and HG-AS (50.6%). Patients with advanced stage cardiac damage had significantly higher mortality after TAVI than those with early stage cardiac damage in all subtypes of AS (adjusted hazard ratio [HR_{adjusted}] 1.66, 95% confidence interval [CI]: 1.34-2.06 for HG-AS; HR_{adjusted} 1.49, 95% CI: 1.02-2.16 for classical LF LG-AS; HR_{adjusted} 1.69, 95% CI: 1.22-2.35 for LF LG-AS with pEF; and HR_{adjusted} 1.52, 95% CI: 1.04-2.32 for NF LG-AS).

Conclusions: Cardiac damage staging classifications stratified mortality after TAVI irrespective of AS subtype.

*Corresponding author: Department of Cardiology, Inselspital, Bern University Hospital, Freiburgstrasse 18, 3010 Bern, Switzerland. E-mail: thomas.pilgrim@insel.ch

Abbreviations

AS	aortic stenosis
EF	ejection fraction
HG	high gradient
LF	low flow
LG	low gradient
LV	left ventricular
LVEF	left ventricular ejection fraction
NF	normal flow
TAVI	transcatheter aortic valve implantation

Introduction

Aortic stenosis (AS) is the prevailing valvular heart disease in high-income countries with ageing populations¹. High-gradient AS (HG-AS) can be assumed to be severe irrespective of left ventricular (LV) function and flow condition, and current guidelines recommend aortic valve intervention for symptomatic HG-AS^{2,3}. Low-gradient AS (LG-AS) is a unique entity, accounting for nearly 40% of patients with symptomatic, severe AS. The low-gradient state may represent a more advanced stage of severe AS than HG-AS due to impaired LV function or altered LV morphology caused by long-standing outflow obstruction; however, it may also be caused by other cardiac factors such as coronary artery disease, multivalvular heart disease, and atrial fibrillation (AF), resulting in a considerable heterogeneity of this entity⁴. Although current guidelines indicate that aortic valve replacement therapy is recommended or reasonable in patients with LG-AS and evidence of true stenosis^{2,3}, the available evidence does not provide guidance on the indications nor the timing at an individual level for this heterogeneous group of patients. As a result, patients with LG-AS are less likely to undergo aortic valve replacement therapy when compared to those with HG-AS, despite their poor prognosis⁵.

Recently, G  n  reux et al proposed a new staging classification to semiquantitatively assess the extent of extra-aortic valve cardiac damage⁶. Several studies demonstrated a strong prognostic impact of the staging classification in patients undergoing transcatheter aortic valve implantation (TAVI)⁷⁻¹⁰, and the concept may provide further insights into the indications and appropriate timing of TAVI for each AS subtype. In the present study, we aimed to investigate the extent of extra-aortic valve cardiac damage and its prognostic impact in patients with HG-AS and LG-AS who underwent TAVI.

Editorial, see page 794

Methods

STUDY DESIGN AND POPULATION

Between August 2007 and June 2022, consecutive AS patients undergoing TAVI at Bern University Hospital (Bern, Switzerland) were enrolled into an institutional prospective registry. The registry is part of the nationwide SwissTAVI Registry (ClinicalTrials.gov: NCT01368250)¹¹. For the purpose of the present study, we excluded 1,405 patients with incomplete or unavailable baseline echocardiographic images to assess cardiac damage according to the staging classification proposed by G  n  reux and colleagues.

After dividing patients into HG-AS and LG-AS groups, LG-AS was categorised into 3 subtypes according to LV systolic function and flow status. During this process, 19 patients without information on stroke volume index (SVI) and 1 patient with missing data on LV ejection fraction (LVEF) were excluded. The registry is approved by the Bern cantonal ethics committee, and patients provided written informed consent for participation.

CARDIAC DAMAGE STAGING CLASSIFICATION

The presence and extent of cardiac damage were evaluated prior to TAVI based on the modified staging scheme^{6,9,12}. Patients were classified into the following stages: Stage 0 – no extra-aortic valve cardiac damage; Stage 1 – LV damage (LVEF <60%, LV mass index >95 g/m² in women or >115 g/m² in men, or LV diastolic dysfunction ≥grade II); Stage 2 – left atrial (LA) or mitral valve damage (LA volume index >34 ml/m², mitral regurgitation ≥moderate, or presence of AF); Stage 3 – pulmonary vasculature or tricuspid valve damage (systolic pulmonary artery pressure [PAP] ≥60 mmHg, mean PAP ≥25 mmHg, or tricuspid regurgitation ≥moderate); and Stage 4 – right ventricular (RV) damage. PAP was obtained from either right heart catheterisation or echocardiographic measurements¹². Patients were hierarchically classified into the most advanced stage if at least one of the criteria was met within that stage. Based on the considerable difference in prognostic impact¹³, we grouped these five stages into early stage disease (stage 0, 1, and 2) and advanced stage disease (stage 3 and 4) as previously validated¹⁴.

DEFINITION OF AS SUBTYPES

HG-AS was defined as an aortic valve area (AVA) ≤1.0 cm² and aortic mean gradient (MG) ≥40 mmHg. Classical low-flow (LF) LG-AS was defined as an AVA <1 cm², LVEF <50%, MG <40 mmHg, and SVI <35 ml/m². LF LG-AS with preserved ejection fraction (EF) was defined as an AVA <1 cm², LVEF ≥50%, MG <40 mmHg, and SVI <35 ml/m². Normal-flow (NF) LG-AS was defined as an AVA <1 cm², LVEF ≥50%, MG <40 mmHg, and SVI >35 ml/m². Aortic-valvular complex calcification was assessed using the end-systolic phase of computed tomography by a dedicated core lab, and the device landing zone calcium volume was quantified in the contrast images using a predefined Hounsfield unit threshold of 850, as previously validated¹⁵. Dobutamine stress echocardiography, which can be useful in the diagnosis of LG-AS, was not routinely performed.

ECHOCARDIOGRAPHY

Comprehensive transthoracic echocardiography was performed by a board-certified cardiologist and echocardiography specialist within 3 months before TAVI in accordance with the current American Society of Echocardiography guidelines¹⁶. Acquired images were independently re-evaluated by experienced imaging specialists in the Bern imaging core laboratory (Bern, Switzerland). Stroke volume was derived from the cross-sectional area of the LV outflow tract multiplied by the time-velocity integral of flow by pulsed-wave Doppler at that location. RV

function was assessed as previously described, and RV dysfunction was documented in the presence of at least two of the following parameters: tricuspid annular plane systolic excursion <1.7 cm, tricuspid annular peak systolic velocity (S') <9.5 cm/s and fractional area change $<35\%$ ¹⁷.

DATA COLLECTION AND CLINICAL ENDPOINTS

Baseline clinical, procedural, and follow-up data were prospectively recorded in a dedicated database held at the Clinical Trials Unit of the University of Bern, Switzerland. All adverse events were systematically collected and adjudicated by a dedicated clinical event committee based on the Valve Academic Research Consortium definitions applicable at the time of the procedure¹⁸⁻²⁰. The primary outcome of interest in the present study was all-cause mortality after TAVI.

STATISTICAL ANALYSIS

Categorical variables are represented as frequencies and percentages, and the differences between groups were evaluated with the Veni test or Fisher's exact test. Continuous variables are presented as mean values \pm standard deviation and compared between groups using the F-test in an analysis of variance (ANOVA) or Kruskal-Wallis test in combination with pairwise Wilcoxon test with correction for multiple testing, as appropriate. Risk ratios with 95% confidence intervals (CIs) from Poisson regressions were provided where appropriate. Time-to-event curves were constructed using the Kaplan-Meier method; a comparison of cumulative event rates between these groups was performed by log-rank test. Cox proportional hazards models were used to calculate hazard ratios (HRs) and 95% CIs for the clinical outcomes. Age, sex, and Society of Thoracic Surgeons Predicted Risk of Mortality (STS-PROM), baseline LVEF, baseline New York Heart Association (NYHA) Functional Class III or IV, estimated glomerular filtration rate, and

the year of TAVI (the study period was divided into tertiles [1st: up to 20 May 2014; 2nd: 20 May 2014 to 12 August 2017; 3rd: 12 August 2017 to 30 June 2022]) were selected and introduced as covariates in multivariable Cox proportional hazards models. SPSS software version 23.0 (IBM) was used for statistical analysis. All statistical tests were 2-sided, and p-values <0.05 were considered significant.

Results

STUDY POPULATION AND BASELINE CHARACTERISTICS

Among 3,586 consecutive patients undergoing TAVI between August 2007 and June 2022, 2,090 patients were included in the present analysis. Of these, 1,045 patients (50.0%) had HG-AS, 337 patients (16.1%) had classical LF LG-AS, 394 patients (18.9%) had LF LG-AS with preserved EF, and 314 patients (15.0%) had NF LG-AS (Figure 1). Baseline characteristics according to each AS subtype are shown in Table 1. The prevalence of cardiac damage stage across different subtypes of AS is summarised in Figure 2 and the Central illustration. An advanced stage of cardiac damage was most prevalent among patients with classical LF LG-AS (73.6%), followed by LF LG-AS with preserved EF (55.6%), NF LG-AS (51.6%), and HG-AS (50.6%).

In patients with HG-AS, approximately half (50.6%) had advanced cardiac damage. Patients with advanced stage cardiac damage had a higher surgical risk (STS-PROM: $6.2\pm 4.7\%$ vs $4.7\pm 3.1\%$; $p<0.001$), worse heart failure symptoms (NYHA Functional Class III or IV: 68.6% vs 61.2%; $p=0.012$), and a lower LVEF ($53\pm 14\%$ vs $61\pm 10\%$; $p<0.001$) than those with early stage cardiac damage. Chronic kidney disease, AF, previous myocardial infarction, previous cardiac surgery, and previous permanent pacemaker implantation were more common in patients with advanced compared to early stage cardiac damage (73.5% vs 64.3%; $p=0.001$; 35.3% vs 24.0%; $p<0.001$; 14.2% vs 8.7%;

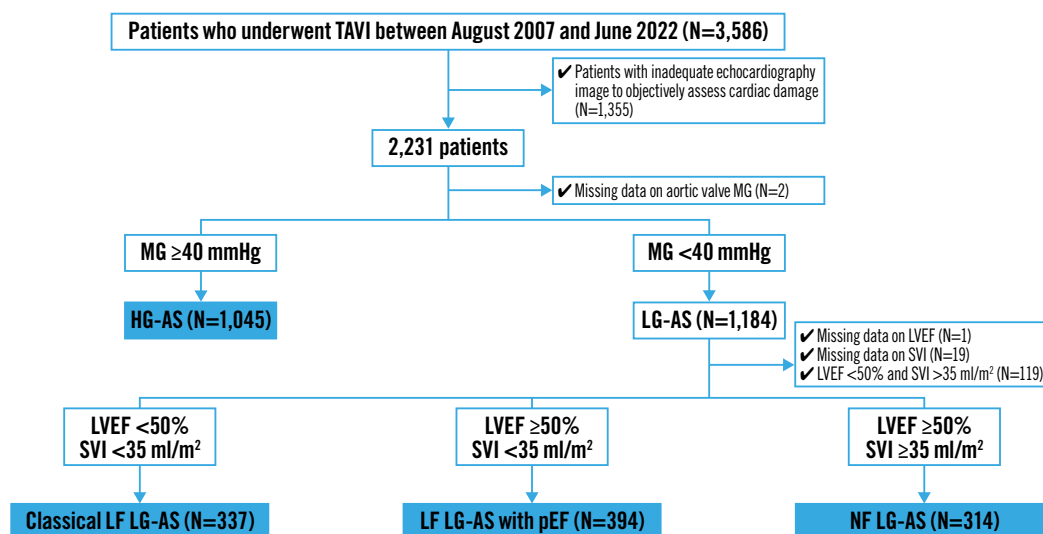


Figure 1. Study flowchart. AS: aortic stenosis; HG: high gradient; LF: low flow; LG: low gradient; LVEF: left ventricular ejection fraction; MG: mean gradient; NF: normal flow; pEF: preserved ejection fraction; SVI: stroke volume index; TAVI: transcatheter aortic valve implantation

Table 1. Baseline characteristics according to AS subtypes.

	HG-AS	Classical LF LG-AS	LF LG-AS with pEF	NF LG-AS	p-value
	N=1,045	N=337	N=394	N=314	
Age, years	82.4±5.9 ^{bd}	81.0±7.5 ^a	82.0±6.6	81.5±6.3 ^a	0.073
Female	565 (54.1) ^b	109 (32.3) ^{acd}	220 (55.8) ^b	155 (49.4) ^b	<0.001
Body mass index, kg/m ²	26.4±5.5 ^c	25.8±5.2 ^c	27.0±5.7 ^{abd}	25.9±5.1 ^c	0.018
STS-PROM, %	5.4±4.1 ^b	7.0±5.3 ^{acd}	5.1±3.2 ^b	5.1±3.5 ^b	<0.001
NYHA III or IV	679 (65.0) ^b	262 (78.0) ^{acd}	273 (69.3) ^b	197 (62.7) ^b	<0.001
Concomitant diseases					
Hypertension	882 (84.4) ^d	289 (85.8)	342 (86.8)	280 (89.2) ^a	0.177
Diabetes mellitus	256 (24.5) ^b	113 (33.5) ^{ad}	116 (29.4)	76 (24.2) ^b	0.004
CKD (eGFR <60 ml/min/1.73 m ²)	720 (69.0)	238 (70.6)	267 (67.8)	219 (70.0)	0.847
eGFR, ml/min/1.73 m ²	52.5±21.7 ^b	50.2±22.1 ^{ac}	53.1±21.6 ^b	50.6±22.5	0.088
COPD	114 (10.9) ^c	47 (14.0)	61 (15.5) ^a	43 (13.7)	0.088
Coronary artery disease	580 (55.5) ^{bd}	231 (68.5) ^{ac}	240 (60.9) ^b	194 (61.8) ^a	<0.001
Atrial fibrillation	311 (29.8) ^{bc}	161 (47.8) ^{ad}	167 (42.4) ^{ad}	104 (33.1) ^{bc}	<0.001
Previous history					
Previous myocardial infarction	120 (11.5) ^b	97 (28.8) ^{acd}	51 (12.9) ^b	40 (12.7) ^b	<0.001
Previous cardiac surgery	109 (10.4) ^{bcd}	81 (24.0) ^{ac}	64 (16.2) ^{ab}	57 (18.2) ^a	<0.001
Previous stroke	115 (11.0) ^b	52 (15.4) ^a	49 (12.4)	44 (14.0)	0.141
Previous permanent pacemaker implantation	63 (6.0) ^{bc}	49 (14.5) ^{ad}	42 (10.7) ^a	28 (8.9) ^b	<0.001
Peripheral artery disease	138 (13.2) ^b	61 (18.1) ^a	57 (14.5)	43 (13.7)	0.165
Echocardiography					
Aortic valve area, cm ²	0.63±0.23 ^{bcd}	0.76±0.28 ^{ad}	0.77±0.26 ^{ad}	0.85±0.30 ^{abc}	<0.001
Mean aortic valve pressure gradient, mmHg	53±13 ^{bcd}	24±9 ^{bcd}	27±8 ^{ab}	28±9 ^{ab}	<0.001
Left ventricular ejection fraction, %	57±13 ^{bcd}	32±11 ^{acd}	61±7 ^{abd}	63±7 ^{abc}	<0.001
Left ventricular mass index, g/m ²	139±44 ^{bcd}	147±51 ^{acd}	121±41 ^{ab}	124±41 ^{ab}	<0.001
Left atrial volume index, ml/m ²	43±16 ^{bcd}	49±23 ^{acd}	42±17 ^{ab}	42±24 ^{ab}	<0.001
Mitral regurgitation ≥moderate	217 (21.0) ^b	141 (42.7) ^{acd}	80 (20.6) ^b	59 (19.2) ^b	<0.001
Tricuspid regurgitation ≥moderate	161 (15.6) ^{bc}	90 (27.4) ^{ad}	84 (21.6) ^a	52 (16.7) ^b	<0.001
Systolic pulmonary artery pressure, mmHg	46±18 ^{bd}	49±19 ^{acd}	46±18 ^{bd}	43±16 ^{abc}	<0.001
Tricuspid annular plane systolic excursion, mm	21±5 ^{bc}	17±6 ^{acd}	19±5 ^{abd}	21±5 ^{bc}	<0.001
Stroke volume index, ml/m ²	34±12 ^{bcd}	25±6 ^{acd}	26±6 ^{abd}	45±12 ^{abc}	<0.001
Computed tomography					
Aortic valvular complex calcification, mm ³	442.4±423.8 ^{bcd}	213.3±229.9 ^a	206.3±273.2 ^a	200.3±203.6 ^a	<0.001
Right heart catheterisation					
Mean pulmonary artery pressure, mmHg	31±12 ^{bd}	34±12 ^{acd}	30±12 ^{bd}	28±9 ^{abc}	<0.001

Data are presented as n (%) or mean±standard deviation. ^ap-value<0.05 versus HG-AS. ^bp-value<0.05 versus classical LF LG-AS. ^cp-value<0.05 versus LF LG-AS with pEF. ^dp-value<0.05 versus NF LG-AS. AS: aortic stenosis; CKD: chronic kidney disease; COPD: chronic obstructive pulmonary disease; eGFR: estimated glomerular filtration rate; HG: high gradient; LF: low flow; LG: low gradient; NF: normal flow; NYHA: New York Heart Association; pEF: preserved ejection fraction; STS-PROM: Society of Thoracic Surgeons Predicted Risk of Mortality

p=0.006; 12.5% vs 8.3%; p=0.028; and 7.6% vs 4.5%; p=0.035, respectively) (**Supplementary Table 1**).

The majority of patients with classical LF LG-AS (73.6%) had advanced cardiac damage. Patients in this subgroup with advanced cardiac damage were comparable in terms of surgical risk and comorbidities to patients with early stage cardiac damage, except for the presence of AF (51.2% vs 38.2%; p=0.035). LVEF was lower in patients with advanced cardiac damage compared with

those with early cardiac damage (31±12% vs 35±10%; p=0.004) (**Supplementary Table 2**).

LF LG-AS with preserved EF patients had advanced cardiac damage in 55.6% of cases. Patients in this particular group were found to have higher surgical risk (STS-PROM: 5.5±3.5% vs 4.7±2.6%; p=0.009), higher prevalence of AF (55.3% vs 26.3%; p<0.001), and a lower LVEF (60±7% vs 63±7%; p<0.001) compared to those with early stage cardiac damage (**Supplementary Table 3**).

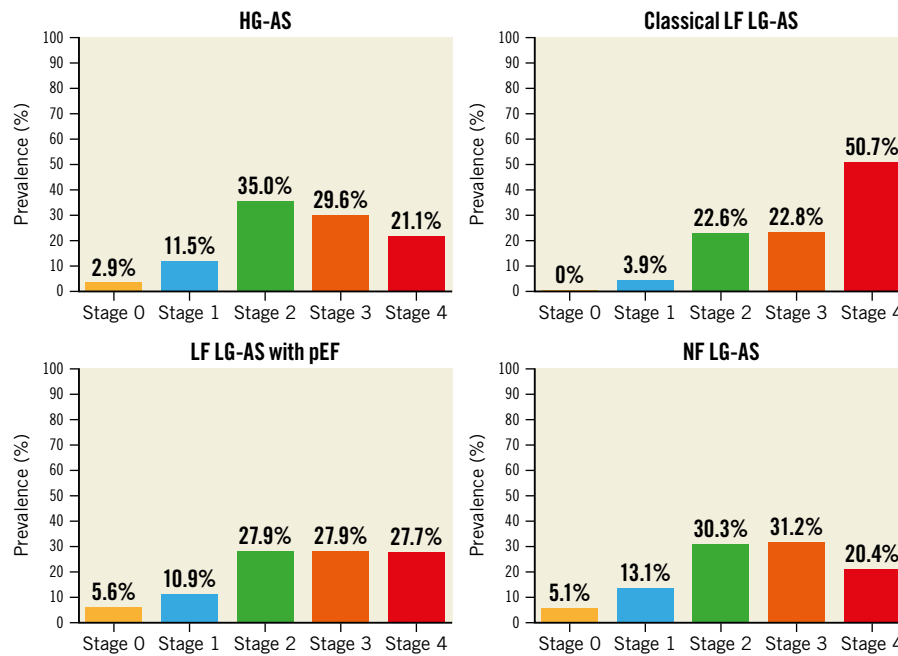


Figure 2. Distribution of cardiac damage stage according to AS subtype. AS: aortic stenosis; HG: high gradient; LF: low flow; LG: low gradient; NF: normal flow; pEF: preserved ejection fraction

In NF LG-AS patients, 162 (51.6%) were in an advanced stage of cardiac damage. They had worse heart failure symptoms (NYHA Functional Class III or IV: 69.1% vs 55.9%; $p=0.016$) and a lower LVEF ($62\pm7\%$ vs $64\pm7\%$; $p=0.040$) compared to patients with early stage cardiac damage. Along the same line, hypertension (93.8% vs 84.2%; $p=0.006$), coronary artery disease (68.5% vs 54.6%; $p=0.011$), and a history of cardiac surgery (22.8% vs 13.2%; $p=0.026$) were more common in patients with advanced stage cardiac damage than those with early stage damage (**Supplementary Table 4**).

The prevalence of AF was higher in the advanced stages than in the early stages of cardiac damage across all AS subtypes.

CLINICAL OUTCOMES

At a median follow-up of 1,095 (interquartile range 365-1,825) days after TAVI, mortality was highest in patients with classical LF LG-AS (63.0%), followed by LF LG-AS with preserved EF (53.1%), HG-AS (46.1%), and NF LG-AS (41.1%), reflecting the respective proportions of advanced cardiac damage (**Figure 3**). Adjusted HRs of all-cause and cardiovascular mortality in patients with advanced compared to early stage cardiac damage in each subtype of AS are summarised in the **Central illustration** and **Table 2**. The presence of advanced cardiac damage was independently associated with higher all-cause mortality, regardless of the AS subtype ($HR_{adjusted}$ 1.66, 95% CI: 1.34-2.06; $p<0.001$ for HG-AS; $HR_{adjusted}$ 1.49; 95% CI: 1.02-2.16; $p=0.043$ for classical LF LG-AS; $HR_{adjusted}$ 1.69; 95% CI: 1.22-2.35; $p=0.002$ for LF LG-AS with preserved LVEF; and $HR_{adjusted}$ 1.52; 95% CI: 1.04-2.32; $p=0.042$ for NF LG-AS, respectively). A detailed analysis differentiating four cardiac stages (stage 0 or 1, stage 2,

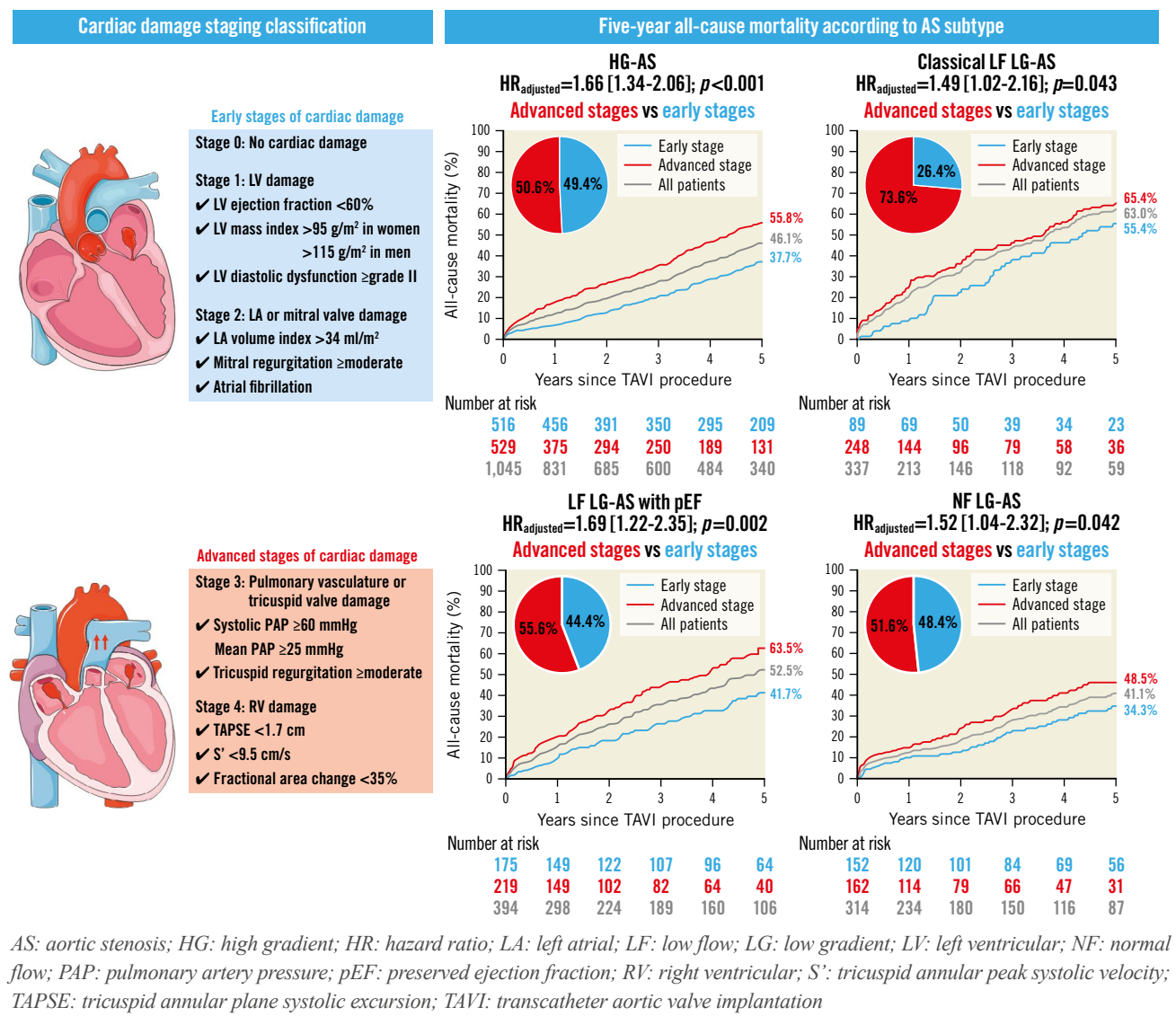
stage 3, and stage 4) in each AS subtype is shown in **Figure 4** and **Supplementary Table 5**.

Discussion

The main findings of the current study are as follows: 1) the majority of patients with classical LF LG-AS had evidence of advanced cardiac damage, followed by LF LG-AS with preserved EF, NF LG-AS, and HG-AS in descending order. 2) Mortality in both early and advanced stages was highest in patients with classical LF LG-AS, followed by LF LG-AS with preserved EF, HG-AS, and NF LG-AS. 3) Advanced cardiac damage conferred an increased mortality risk after TAVI irrespective of the AS subtype.

The cardiac damage staging classification characterising the extent of extra-aortic valve cardiac damage, as proposed by Génereux and colleagues, has important prognostic implications in patients undergoing TAVI⁶. The prognostic model was validated and refined in several populations, including symptomatic and asymptomatic AS patients⁷⁻¹⁰. In these studies, patients with LG-AS represented 20-30% of the total population, and this proportion increased with progressive stages of advanced cardiac damage. Recently, Snir et al reported that advanced cardiac damage was observed in 34.0% of classical LF LG-AS patients, 22.5% of LF LG-AS patients with preserved EF, 15.5% of NF LG-AS patients, and 14.0% of HG-AS patients²¹. Consistent with these results, the present study demonstrated that an advanced stage of cardiac damage was most common in classical LF LG-AS (73.6%), followed by LF LG-AS with preserved EF (55.6%), NF LG-AS (51.6%), and HG-AS (50.6%). The marked prevalence of advanced cardiac damage in our study, compared to the previous study, may be attributed, at least in part, to differences in the

CENTRAL ILLUSTRATION 5-year all-cause mortality according to cardiac damage staging classification in each AS subtype.



studied populations. Whereas the previous study was based on a national echo database in which only 20% of patients underwent aortic valve intervention, our study focused on elderly patients with symptomatic severe AS undergoing TAVI. Moreover, using an echocardiographic guideline-based definition of RV dysfunction may have enhanced the sensitivity in identifying patients with advanced cardiac damage in the present study⁷.

Previous studies have shown that patients with advanced cardiac stage were likely to be at higher surgical risk and have a higher prevalence of comorbidities⁷⁻¹⁰. In the present study, this observation was corroborated across the haemodynamic spectrum of AS. Furthermore, there was a higher proportion of women in advanced stages of cardiac damage across all AS subtypes, corroborating previous observations that women with AS tend to be underdiagnosed and undertreated²². We found that an advanced stage of

cardiac damage conferred an approximately 1.5-fold increased risk of mortality across all AS subtypes, thus, underscoring the importance of timely aortic valve intervention before the development of secondary cardiac damage. However, a higher mortality was observed in classical LF LG-AS patients compared to other AS subtypes, even in the early stages.

Myocardial fibrosis, as indicated by the presence of late gadolinium enhancement, was more frequently observed in classical LF LG-AS²³, implying that it is the most advanced AS phenotype; this is supported by our finding that more than 70% of patients with classical LF LG-AS are in an advanced stage of cardiac damage. However, considering that patients with classical LF LG-AS had larger AVA than those patients with HG-AS in the present study, this subtype is not necessarily a late presentation of AS. In classical LF LG-AS, the LF haemodynamic state is usually caused

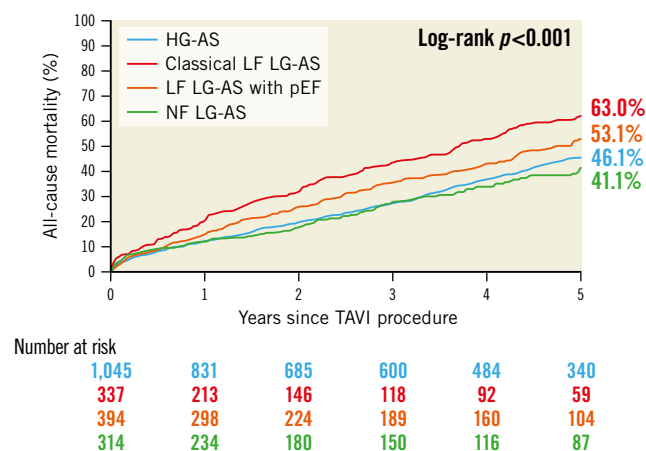


Figure 3. Five-year all-cause mortality according to AS subtype.

AS: aortic stenosis; HG: high gradient; LF: low flow; LG: low gradient; NF: normal flow; pEF: preserved ejection fraction; TAVI: transcatheter aortic valve implantation

by impaired LV function due to afterload mismatch by chronic AS or concomitant cardiomyopathy, frequently as a result of coronary artery disease⁴. Indeed, in the present study, patients with classical LF LG-AS were more likely to be male and had the highest frequency of cardiovascular disease, chronic obstructive pulmonary disease, history of myocardial infarction and cardiac surgery, which may contribute to impaired LV systolic function. In the analysis from the PARTNER 2 trials, a lower proportion of patients with advanced cardiac damage had cumulative damage from earlier stages⁶. Nevertheless, this group showed that persistent cardiac damage after aortic intervention was associated with a worse prognosis²⁴. These findings suggest that the development of cardiac damage is also driven by comorbid and/or underlying disease and highlight the importance of targeted-treatment strategies for the underlying disease in patients with severe AS referred for aortic valve intervention.

In contrast, patients with NF LG-AS featured the least extent of cardiac damage and experienced lower all-cause mortality

Table 2. Clinical outcomes according to cardiac damage in each AS subtype.

All-cause mortality at 1 year				
	HG-AS	Classical LF LG-AS	LF LG-AS with pEF	NF LG-AS
Early stage	35 (7.1)	7 (9.5)	17 (10.2)	15 (11.1)
	reference	reference	reference	reference
Advanced stage	89 (19.3)	57 (28.6)	42 (22.2)	23 (16.9)
	HR 2.39 [1.57-3.66]	HR 3.24 [1.46-7.19]	HR 1.65 [0.90-3.01]	HR 1.31 [0.67-2.58]
	p<0.001	p=0.004	p=0.105	p=0.432
Cardiovascular mortality at 1 year				
Early stage	21 (4.3)	4 (5.4)	11 (6.6)	5 (3.7)
	reference	reference	reference	reference
Advanced stage	59 (12.8)	44 (22.1)	31 (16.4)	14 (10.3)
	HR 2.47 [1.43-4.27]	HR 4.21 [1.49-11.86]	HR 1.78 [0.85-3.73]	HR 2.40 [0.84-6.87]
	p=0.001	p=0.007	p=0.129	p=0.102
All-cause mortality at 5 years				
Early stage	164 (37.7)	37 (55.4)	63 (41.7)	41 (34.3)
	reference	reference	reference	reference
Advanced stage	233 (55.8)	114 (65.4)	106 (63.5)	55 (48.5)
	HR 1.66 [1.34-2.06]	HR 1.49 [1.02-2.16]	HR 1.69 [1.22-2.35]	HR 1.52 [1.04-2.32]
	p<0.001	p=0.043	p=0.002	p=0.042
Cardiovascular mortality at 5 years				
Early stage	103 (26.7)	26 (42.7)	44 (32.7)	25 (24.4)
	reference	reference	reference	reference
Advanced stage	166 (45.4)	91 (58.4)	74 (51.6)	38 (37.6)
	HR 1.90 [1.45-2.47]	HR 1.60 [1.02-2.50]	HR 1.71 [1.15-2.53]	HR 1.59 [0.93-2.68]
	p<0.001	p=0.040	p=0.008	p=0.105

Data are presented as n (%) or HR with 95% CI. HR was adjusted by age, sex, Society of Thoracic Surgeons Predicted Risk of Mortality, left ventricular ejection fraction, New York Heart Association Class III or IV, estimated glomerular filtration rate, and the year of transcatheter aortic valve implantation. AS: aortic stenosis; CI: confidence interval; HG: high gradient; HR: hazard ratio; LF: low flow; LG: low gradient; NF: normal flow; pEF: preserved ejection fraction

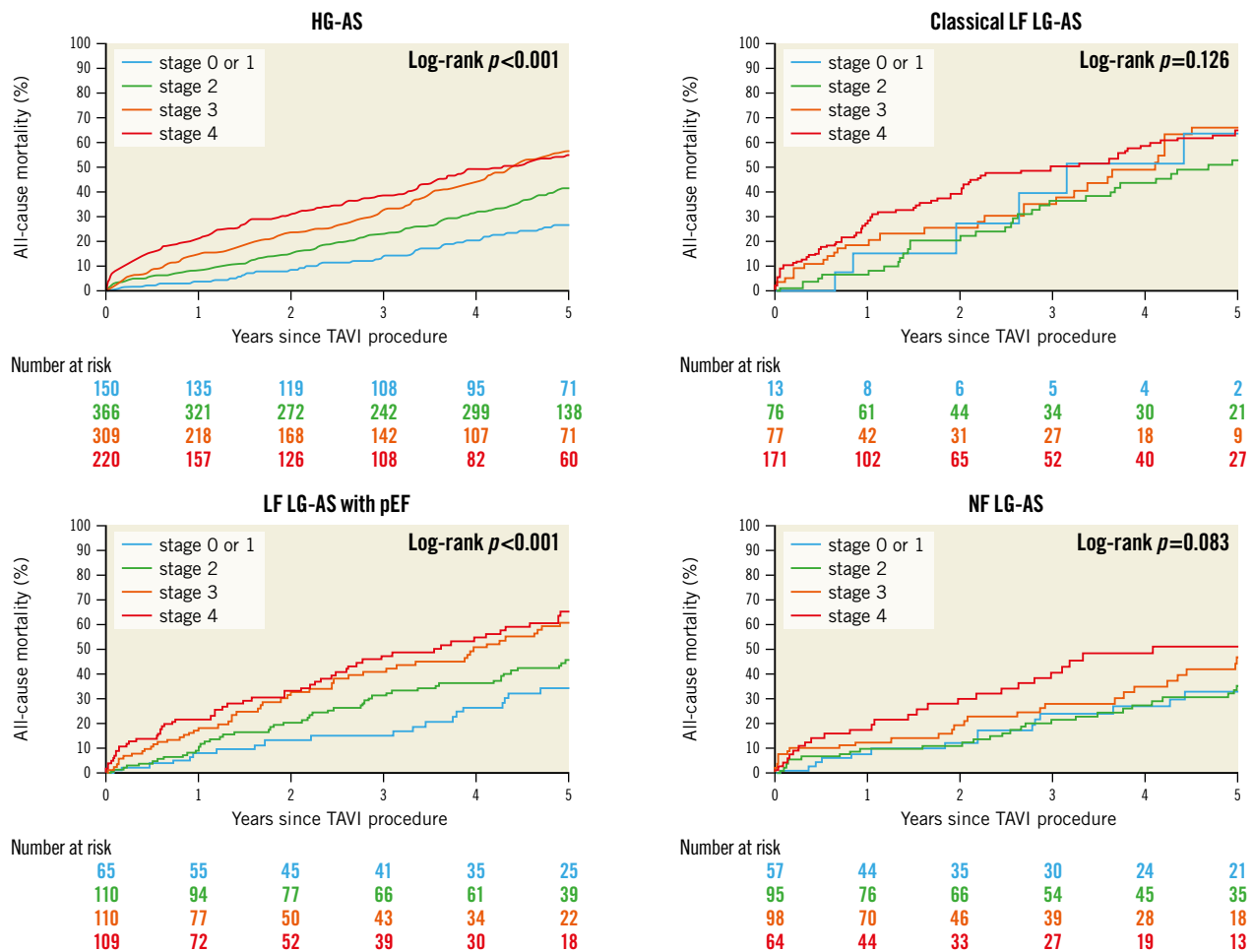


Figure 4. Five-year all-cause mortality according to four cardiac damage stages. AS: aortic stenosis; HG: high gradient; LF: low flow; LG: low gradient; NF: normal flow; pEF: preserved ejection fraction; TAVI: transcatheter aortic valve implantation

compared with other AS subtypes, thus, supporting the notion that NF LG-AS represents only moderate to borderline severe AS^{3,25–27}. Nevertheless, a recent study in 1,245 individuals reported that 17.5% of patients with moderate AS exhibited advanced cardiac damage and demonstrated a stepwise increase in long-term mortality according to cardiac damage stage²⁸. Our findings corroborate these results by showing a significantly higher mortality in patients with advanced stages of cardiac damage compared to those in an earlier stage. Interestingly, however, patients with NF LG-AS had lower mortality than other AS subtypes, despite features of advanced cardiac damage. A previous study suggested that a proportion of patients exhibit regression of cardiac damage following TAVI²⁴. It can therefore be hypothesised that advanced cardiac damage is reversible in patients with NF LG-AS and may improve after TAVI. An ongoing clinical trial will provide further insight into the clinical benefit of early intervention in patients with less severe AS and delineate the importance of cardiac damage in this population (PROGRESS; ClinicalTrials.gov: NCT04889872).

Limitations

The present analysis is a retrospective, observational, single-centre study with inherent limitations. First, more than 40% of

the patients were excluded because of inadequate echocardiography for assessment of cardiac damage classification and AS subtype, which may have resulted in some degree of selection bias. As shown in **Supplementary Table 6**, patients included in the present analyses were older, had a higher surgical risk and a higher prevalence of comorbidities compared with those excluded from the present analysis. Second, as we did not routinely perform dobutamine stress echocardiography in patients with classical LF LG-AS, patients with pseudo-severe AS may have been included in this study. Furthermore, this study may have included some patients with moderate AS in the NF LG-AS group (AVA 0.85 ± 0.30 cm²). However, all patients underwent intervention after thorough clinical assessment and interdisciplinary discussion within the Heart Team. Third, due to the small number of patients in each AS subtype, especially early stages, this study may have been underpowered to detect the smaller effect sizes of earlier cardiac damage stages. Furthermore, grouping cardiac damage into early and advanced stages is arbitrary. Finally, we did not investigate follow-up echocardiography after TAVI. Further studies on the evolution of cardiac damage and its impact on clinical outcomes in each AS subtype are needed.

Conclusions

Staging classifications of AS according to extra-aortic valve cardiac damage successfully stratified mortality after TAVI in all AS subtypes. It is essential to identify AS patients at an early stage of secondary cardiac damage and perform TAVI before progression to more advanced stages, irrespective of AS subtype. However, in patients with classical LF LG-AS, a conservative control group is mandatory for comparison to ultimately quantify the net benefit of TAVI in accordance with the staging classification of the extra-aortic valve cardiac damage.

Impact on daily practice

The staging system provided prognostic value across all AS subtypes. However, higher mortality was observed in classical LF LG-AS patients compared to other AS subtypes, even in the early stages. In this particular population, the risks and benefits of TAVI should be carefully weighed.

Conflict of interest statement

S. Windecker reports research and educational grants to the institution from Abbott, Amgen, AstraZeneca, Bristol-Myers Squibb, Bayer AG, Biotronik, Boston Scientific, Cardinal Health, CardioValve (Venus Medtech), CSL Behring, Daiichi Sankyo, Edwards Lifesciences, Guerbet, InfraRedx, Johnson & Johnson, Medtronic, Medtronic, Novartis, Polares, OrPha Suisse, Pfizer, Regeneron, Sanofi-Aventis, Sinomed, Terumo, and V-Wave. S. Windecker serves as an unpaid advisory board member and/or unpaid member of the steering/executive group of trials funded by Abbott, Abiomed, Amgen, AstraZeneca, Bristol-Myers Squibb, Boston Scientific, Biotronik, CardioValve (Venus Medtech), Edwards Lifesciences, MED Alliance, Medtronic, Novartis, Polares, Sinomed, V-Wave, and Xeltis, but has not received personal payments from pharmaceutical companies or device manufacturers. He is also member of the steering/executive committee group of several investigator-initiated trials that receive funding from industry without impact on his personal remuneration. S. Windecker is an unpaid member of the Pfizer Research Award selection committee in Switzerland and of the Women as One Awards Committee. He is a member of the Clinical Study Group of the Deutsches Zentrum für Herz-Kreislauf-Forschung and of the Advisory Board of the Australian Victorian Heart Institute. He is Chairperson of the ESC Congress Program Committee and Deputy Editor of JACC Cardiovascular Interventions. T. Pilgrim reports research grants to the institution from Edwards Lifesciences and Biotronik; and personal fees from Biotronik, Medtronic, Abbott, Edwards Lifesciences, and HighLife SAS. S. Stortecky reports research grants to the institution from Edwards Lifesciences, Medtronic, Abbott, and Boston Scientific; and personal fees from Boston Scientific, Teleflex, and BTG. F. Praz reports travel expenses from Abbott, Edwards Lifesciences, and Polares Medical. The other authors have no conflicts of interest to declare.

References

- Lindman BR, Clavel MA, Mathieu P, Lung B, Lancellotti P, Otto CM, Pibarot P. Calcific aortic stenosis. *Nat Rev Dis Primers*. 2016;2:16006.
- Otto CM, Nishimura RA, Bonow RO, Carabello BA, Erwin JP 3rd, Gentile F, Jneid H, Krieger EV, Mack M, McLeod C, O'Gara PT, Rigolin VH, Sundt TM 3rd, Thompson A, Toly C. 2020 ACC/AHA Guideline for the Management of Patients With Valvular Heart Disease: A Report of the American College of Cardiology/American Heart Association Joint Committee on Clinical Practice Guidelines. *Circulation*. 2021;143:e72-227.
- Vahanian A, Beyersdorf F, Praz F, Milojevic M, Baldus S, Bauersachs J, Capodanno D, Conradi L, De Bonis M, De Paulis R, Delgado V, Freemantle N, Haugaa KH, Jeppsson A, Jüni P, Pierard L, Prendergast BD, Sádaba JR, Tribouilloy C, Wojakowski W. 2021 ESC/EACTS Guidelines for the management of valvular heart disease. *EuroIntervention*. 2022;17:e1126-96.
- Clavel MA, Magne J, Pibarot P. Low-gradient aortic stenosis. *Eur Heart J*. 2016;37:2645-57.
- Li SX, Patel NK, Flannery LD, Selberg A, Kandanelly RR, Morrison FJ, Kim J, Tanguturi VK, Crousillat DR, Shaqdan AW, Inglessis I, Shah PB, Passeri JJ, Kaneko T, Jassar AS, Langer NB, Turchin A, Elmariyah S. Trends in Utilization of Aortic Valve Replacement for Severe Aortic Stenosis. *J Am Coll Cardiol*. 2022;79:864-77.
- Généreux P, Pibarot P, Redfors B, Mack MJ, Makkar RR, Jaber WA, Svensson LG, Kapadia S, Tuzcu EM, Thourani VH, Babaliaros V, Herrmann HC, Szeto WY, Cohen DJ, Lindman BR, McAndrew T, Alu MC, Douglas PS, Hahn RT, Kodali SK, Smith CR, Miller DC, Webb JG, Leon MB. Staging classification of aortic stenosis based on the extent of cardiac damage. *Eur Heart J*. 2017;38:3351-8.
- Okuno T, Heg D, Lanz J, Stortecky S, Praz F, Windecker S, Pilgrim T. Staging cardiac damage associated with aortic stenosis in patients undergoing transcatheter aortic valve implantation. *Int J Cardiol Heart Vasc*. 2021;33:100768.
- Vollema EM, Amanullah MR, Ng ACT, van der Bijl P, Prevedello F, Sin YK, Prihadi EA, Marsan NA, Ding ZP, Généreux P, Pibarot P, Leon MB, Narula J, Ewe SH, Delgado V, Bax JJ. Staging Cardiac Damage in Patients With Symptomatic Aortic Valve Stenosis. *J Am Coll Cardiol*. 2019;74:538-49.
- Tastet L, Tribouilloy C, Maréchaux S, Vollema EM, Delgado V, Salaun E, Shen M, Capoulade R, Clavel MA, Arsenaault M, Bédard É, Bernier M, Beaudoin J, Narula J, Lancellotti P, Bax JJ, Généreux P, Pibarot P. Staging Cardiac Damage in Patients With Asymptomatic Aortic Valve Stenosis. *J Am Coll Cardiol*. 2019;74:550-63.
- Fukui M, Gupta A, Abdelkarim I, Sharbaugh MS, Althouse AD, Elzomor H, Mulukutla S, Lee JS, Schindler JT, Gleason TG, Cavalcante JL. Association of Structural and Functional Cardiac Changes With Transcatheter Aortic Valve Replacement Outcomes in Patients With Aortic Stenosis. *JAMA Cardiol*. 2019;4:215-22.
- Stortecky S, Franzoni A, Heg D, Tueller D, Noble S, Pilgrim T, Jeger R, Toggweiler S, Ferrari E, Nietlispach F, Taramasso M, Maisano F, Grünenfelder J, Müller O, Huber C, Roffi M, Carrel T, Wenaweser P, Windecker S. Temporal trends in adoption and outcomes of transcatheter aortic valve implantation: a SwissTAVI Registry analysis. *Eur Heart J Qual Care Clin Outcomes*. 2019;5:242-51.
- Okuno T, Heg D, Lanz J, Praz F, Brugger N, Stortecky S, Windecker S, Pilgrim T. Refined staging classification of cardiac damage associated with aortic stenosis and outcomes after transcatheter aortic valve implantation. *Eur Heart J Qual Care Clin Outcomes*. 2021;7:532-41.
- Tastet L, Généreux P, Bernard J, Pibarot P. The Role of Extravalvular Cardiac Damage Staging in Aortic Valve Disease Management. *Can J Cardiol*. 2021;37:1004-15.
- Pellegrini C, Duesmann C, Rheude T, Berg A, Alvarez-Covarrubias HA, Trenkwalder T, Mayr NP, Schürmann F, Nicol P, Xhepa E, Joner M. The impact of extra-valvular cardiac damage on mid-term clinical outcome following transcatheter aortic valve replacement in patients with severe aortic stenosis. *Front Cardiovasc Med*. 2022;9:1039208.
- Okuno T, Asami M, Heg D, Lanz J, Praz F, Hagemeyer D, Brugger N, Gräni C, Huber A, Spirito A, Räber L, Stortecky S, Windecker S, Pilgrim T. Impact of Left Ventricular Outflow Tract Calcification on Procedural Outcomes After Transcatheter Aortic Valve Replacement. *JACC Cardiovasc Interv*. 2020;13:1789-99.
- Mitchell C, Rahko PS, Blauwet LA, Canaday B, Finstuen JA, Foster MC, Horton K, Ogunyankin KO, Palma RA, Velazquez EJ. Guidelines for Performing a Comprehensive Transthoracic Echocardiographic Examination in Adults: Recommendations from the American Society of Echocardiography. *J Am Soc Echocardiogr*. 2019;32:1-64.
- Lang RM, Badano LP, Mor-Avi V, Afilaio J, Armstrong A, Ernande L, Flachskampf FA, Foster E, Goldstein SA, Kuznetsova T, Lancellotti P, Muraru D, Picard MH, Rietzschel ER, Rudski L, Spencer KT, Tsang W, Voigt JU. Recommendations for cardiac chamber quantification by echocardiography in adults: an update from the American Society of Echocardiography and the European Association of Cardiovascular Imaging. *J Am Soc Echocardiogr*. 2015;28:1-39.e14.

18. Leon MB, Piazza N, Nikolsky E, Blackstone EH, Cutlip DE, Kappetein AP, Krucoff MW, Mack M, Mehran R, Miller C, Morel MA, Petersen J, Popma JJ, Takkenberg JJ, Vahanian A, van Es GA, Vranckx P, Webb JG, Windecker S, Serruys PW. Standardized endpoint definitions for Transcatheter Aortic Valve Implantation clinical trials: a consensus report from the Valve Academic Research Consortium. *J Am Coll Cardiol*. 2011;57:253-69.
19. Kappetein AP, Head SJ, G  n  reux P, Piazza N, van Mieghem NM, Blackstone EH, Brott TG, Cohen DJ, Cutlip DE, van Es GA, Hahn RT, Kirtane AJ, Krucoff MW, Kodali S, Mack MJ, Mehran R, Rod  s-Cabau J, Vranckx P, Webb JG, Windecker S, Serruys PW, Leon MB. Updated standardized endpoint definitions for transcatheter aortic valve implantation: the Valve Academic Research Consortium-2 consensus document. *J Am Coll Cardiol*. 2012;60:1438-54.
20. VARC-3 WRITING COMMITTEE; G  n  reux P, Piazza N, Alu MC, Nazif T, Hahn RT, Pibarot P, Bax JJ, Leipsic JA, Blanke P, Blackstone EH, Finn MT, Kapadia S, Linke A, Mack MJ, Makkar R, Mehran R, Popma JJ, Reardon M, Rod  s-Cabau J, Van Mieghem NM, Webb JG, Cohen DJ, Leon MB. Valve Academic Research Consortium 3: Updated Endpoint Definitions for Aortic Valve Clinical Research. *J Am Coll Cardiol*. 2021;77:2717-46.
21. Snir AD, Ng MK, Strange G, Playford D, Stewart S, Celermajer DS; National Echo Database of Australia. Cardiac Damage Staging Classification Predicts Prognosis in All the Major Subtypes of Severe Aortic Stenosis: Insights from the National Echo Database Australia. *J Am Soc Echocardiogr*. 2021;34:1137-47.e1113.
22. Guzzetti E, Poulin A, Annabi MS, Zhang B, Kalavrouziotis D, Couture C, Dagenais F, Pibarot P, Clavel MA. Transvalvular Flow, Sex, and Survival After Valve Replacement Surgery in Patients With Severe Aortic Stenosis. *J Am Coll Cardiol*. 2020;75:1897-909.
23. Fukui M, Annabi MS, Rosa VEE, Ribeiro HB, Stanberry LI, Clavel MA, Rod  s-Cabau J, Tarasoutchi F, Schelbert EB, Bergler-Klein J, Bartko PE, Dona C, Mascherbauer J, Dahou A, Rochitte CE, Pibarot P, Cavalcante JL. Comprehensive myocardial characterization using cardiac magnetic resonance associates with outcomes in low gradient severe aortic stenosis. *Eur Heart J Cardiovasc Imaging*. 2022;24:46-58.
24. G  n  reux P, Pibarot P, Redfors B, Bax JJ, Zhao Y, Makkar RR, Kapadia S, Thourani VH, Mack MJ, Nazif TM, Lindman BR, Babaliaros V, Vincent F, Russo M, McCabe JM, Gillam LD, Alu MC, Hahn RT, Webb JG, Leon MB, Cohen DJ. Evolution and Prognostic Impact of Cardiac Damage After Aortic Valve Replacement. *J Am Coll Cardiol*. 2022;80:783-800.
25. Tribouilloy C, Rusinaru D, Mar  chaux S, Castel AL, Debry N, Maizel J, Mentaverri R, Kamel S, Slama M, L  vy F. Low-gradient, low-flow severe aortic stenosis with preserved left ventricular ejection fraction: characteristics, outcome, and implications for surgery. *J Am Coll Cardiol*. 2015;65:55-66.
26. Chadha G, Bohbot Y, Lachambre P, Rusinaru D, Serbout S, Altes A, Pasquet A, Mar  chaux S, Vanoverschelde JL, Tribouilloy C. Progression of Normal Flow Low Gradient "Severe" Aortic Stenosis With Preserved Left Ventricular Ejection Fraction. *Am J Cardiol*. 2020;128:151-8.
27. Saeed S, Vamvakidou A, Seifert R, Khattar R, Li W, Senior R. The impact of aortic valve replacement on survival in patients with normal flow low gradient severe aortic stenosis: a propensity-matched comparison. *Eur Heart J Cardiovasc Imaging*. 2019;20:1094-101.
28. Amanullah MR, Pio SM, Ng ACT, Sin KYK, Marsan NA, Ding ZP, Leon MB, G  n  reux P, Delgado V, Ewe SH, Bax JJ. Prognostic Implications of Associated Cardiac Abnormalities Detected on Echocardiography in Patients With Moderate Aortic Stenosis. *JACC Cardiovasc Imaging*. 2021;14:1724-37.

Supplementary data

Supplementary Table 1. Baseline characteristics of high-gradient aortic stenosis.

Supplementary Table 2. Baseline characteristics of classical low-flow low-gradient aortic stenosis.

Supplementary Table 3. Baseline characteristics of low-flow low-gradient aortic stenosis with preserved ejection fraction.

Supplementary Table 4. Baseline characteristics of normal-flow low-gradient aortic stenosis.

Supplementary Table 5. Clinical outcomes according to four cardiac stages in each AS subtype.

Supplementary Table 6. Comparison of baseline characteristics between included and excluded patients.

The supplementary data are published online at:

<https://eurointervention.pcronline.com/>

doi/10.4244/EIJ-D-23-00590



Supplementary data

Supplementary Table 1. Baseline characteristics of high-gradient aortic stenosis.

	Total	Early stage	Advanced stage	P-value
	N=1045	N=516	N=529	
Age, years	82.4 ± 5.9	82.3 ± 5.5	82.6 ± 6.3	0.349
Female, n (%)	565 (54.1)	267 (51.7)	298 (56.3)	0.137
Body mass index, kg/cm ²	26.4 ± 5.5	26.6 ± 5.6	26.1 ± 5.5	0.099
STS-PROM, %	5.4 ± 4.1	4.7 ± 3.1	6.2 ± 4.7	<0.001
NYHA III or IV, n (%)	679 (65.0)	316 (61.2)	363 (68.6)	0.012
Concomitant diseases				
Hypertension, n (%)	882 (84.4)	436 (84.5)	446 (84.3)	0.934
Diabetes mellitus, n (%)	256 (24.5)	113 (21.9)	143 (27.0)	0.054
CKD (eGFR <60 mL/min/1.73 m ²), n (%)	720 (69.0)	331 (64.3)	389 (73.5)	0.001
eGFR, mL/min/1.73 m ²	52.5 ± 21.7	55.0 ± 22.1	50.0 ± 21.0	<0.001
COPD, n (%)	114 (10.9)	49 (9.5)	65 (12.3)	0.145
Coronary artery disease, n (%)	580 (55.5)	275 (53.3)	305 (57.7)	0.156
Atrial fibrillation, n (%)	311 (29.8)	124 (24.0)	187 (35.3)	<0.001
Previous history				
Previous myocardial infarction, n (%)	120 (11.5)	45 (8.7)	75 (14.2)	0.006
Previous cardiac surgery, n (%)	109 (10.4)	43 (8.3)	66 (12.5)	0.028
Previous stroke, n (%)	115 (11.0)	60 (11.6)	55 (10.4)	0.525
Previous permanent pacemaker implantation, n (%)	63 (6.0)	23 (4.5)	40 (7.6)	0.035
Peripheral artery disease, n (%)	138 (13.2)	60 (11.6)	78 (14.7)	0.137
Echocardiography				

Aortic Valve Area, cm ²	0.63 ± 0.23	0.65 ± 0.21	0.61 ± 0.24	0.002
Mean Aortic valve pressure gradient, mmHg	53 ± 13	53 ± 12	54 ± 14	0.255
Left ventricular ejection fraction, %	57 ± 13	61 ± 10	53 ± 14	<0.001
Left ventricular mass index, g/m ²	139 ± 44	134 ± 44	143 ± 46	0.004
Left atrial volume index, mL/m ²	43 ± 16	41 ± 14	46 ± 17	<0.001
Mitral regurgitation ≥moderate, n (%)	217 (21.0)	58 (11.4)	159 (30.4)	<0.001
Tricuspid regurgitation ≥moderate, n (%)	161 (15.6)	0 (0)	161 (30.6)	<0.001
Systolic pulmonary artery pressure, mmHg	46 ± 18	37 ± 15	56 ± 17	<0.001
Tricuspid annular plane systolic excursion, cm	21 ± 5	23 ± 4	19 ± 6	<0.001
Stroke volume index, mL/m ²	34 ± 12	35 ± 11	33 ± 12	0.005
Computed tomography				
Aortic valvular complex calcification, mm ³	442.4 ± 423.8	429.0 ± 379.7	456.8 ± 466.8	0.324
Right heart catheterisation				
Mean pulmonary artery pressure, mmHg	31 ± 12	25 ± 9	36 ± 13	<0.001
STS-PROM = Society of Thoracic Surgeons Predicted Risk of Mortality; NYHA = New York Heart Association; CKD = chronic kidney disease; eGFR = estimated glomerular filtration rate; COPD = chronic obstructive pulmonary disease.				

Supplementary Table 2. Baseline characteristics of classical low-flow low-gradient aortic stenosis.

	Total	Early stage	Advanced stage	P-value
	N=337	N=89	N=248	
Age, years	81.0 ± 7.5	82.0 ± 6.8	80.8 ± 7.7	0.182
Female, n (%)	109 (32.3)	27 (30.3)	82 (33.1)	0.637
Body mass index, kg/cm ²	25.8 ± 5.2	26.5 ± 5.0	25.5 ± 5.3	0.124
STS-PROM, %	7.0 ± 5.3	6.2 ± 4.9	7.3 ± 5.4	0.120
NYHA III or IV, n (%)	262 (78.0)	64 (71.9)	198 (80.2)	0.107
Concomitant diseases				
Hypertension, n (%)	289 (85.8)	80 (89.9)	209 (84.3)	0.194
Diabetes mellitus, n (%)	113 (33.5)	28 (31.5)	85 (34.3)	0.630
CKD (eGFR <60 mL/min/1.73 m ²), n (%)	238 (70.6)	56 (62.9)	182 (73.4)	0.063
eGFR, mL/min/1.73 m ²	50.2 ± 22.1	53.3 ± 22.4	49.1 ± 22.0	0.116
COPD, n (%)	47 (14.0)	12 (13.5)	35 (14.2)	0.873
Coronary artery disease, n (%)	231 (68.5)	66 (74.2)	165 (66.5)	0.184
Atrial fibrillation, n (%)	161 (47.8)	34 (38.2)	127 (51.2)	0.035
Previous history				
Previous myocardial infarction, n (%)	97 (28.8)	29 (32.6)	68 (27.4)	0.356
Previous cardiac surgery, n (%)	81 (24.0)	17 (19.1)	64 (25.8)	0.204
Previous stroke, n (%)	52 (15.4)	12 (13.5)	40 (16.1)	0.553
Previous permanent pacemaker implantation, n (%)	49 (14.5)	8 (9.0)	41 (16.5)	0.083
Peripheral artery disease, n (%)	61 (18.1)	15 (16.9)	46 (18.5)	0.722
Echocardiography				
Aortic Valve Area, cm ²	0.76 ± 0.28	0.78 ± 0.25	0.76 ± 0.30	0.658
Mean Aortic valve pressure gradient, mmHg	24 ± 9	26 ± 8	23 ± 9	0.008

Left ventricular ejection fraction, %	32 ± 11	35 ± 10	31 ± 12	0.004
Left ventricular mass index, g/m ²	147 ± 51	150 ± 59	146 ± 47	0.564
Left atrial volume index, mL/m ²	49 ± 23	41 ± 13	53 ± 25	<0.001
Mitral regurgitation ≥moderate, n (%)	141 (42.7)	28 (32.9)	113 (46.1)	0.034
Tricuspid regurgitation ≥moderate, n (%)	90 (27.4)	0 (0)	90 (37.0)	<0.001
Systolic pulmonary artery pressure, mmHg	49 ± 19	34 ± 15	55 ± 16	<0.001
Tricuspid annular plane systolic excursion, cm	17 ± 6	22 ± 4	15 ± 5	<0.001
Stroke volume index, mL/m ²	25 ± 6	27 ± 5	24 ± 6	<0.001
Computed tomography				
Aortic valvular complex calcification, mm ³	213.2 ± 229.9	233.7 ± 264.3	204.5 ± 213.5	0.028
Right heart catheterisation				
Mean pulmonary artery pressure, mmHg	34 ± 12	23 ± 8	37 ± 11	<0.001
STS-PROM = Society of Thoracic Surgeons Predicted Risk of Mortality; NYHA = New York Heart Association; CKD = chronic kidney disease; eGFR = estimated glomerular filtration rate; COPD = chronic obstructive pulmonary disease.				

Supplementary Table 3. Baseline characteristics of low-flow low-gradient aortic stenosis with preserved ejection fraction .

	Total	Early stage	Advanced stage	P-value
	N=394	N=175	N=219	
Age, years	82.0 ± 6.6	81.9 ± 6.4	82.1 ± 6.8	0.844
Female, n (%)	220 (55.8)	93 (53.1)	127 (57.9)	0.094
Body mass index, kg/cm ²	27.0 ± 5.7	27.1 ± 5.7	26.9 ± 5.7	0.674
STS-PROM, %	5.1 ± 3.2	4.7 ± 2.6	5.5 ± 3.5	0.009
NYHA III or IV, n (%)	273 (69.3)	120 (68.6)	153 (69.9)	0.782
Concomitant diseases				
Hypertension, n (%)	342 (86.8)	152 (86.9)	190 (86.8)	0.977
Diabetes mellitus, n (%)	116 (29.4)	50 (28.6)	66 (30.1)	0.735
CKD (eGFR <60 mL/min/1.73 m ²), n (%)	267 (67.8)	119 (68.0)	148 (67.6)	0.929
eGFR, mL/min/1.73 m ²	53.1 ± 21.6	53.9 ± 20.5	52.3 ± 22.6	0.480
COPD, n (%)	61 (15.5)	23 (13.1)	38 (17.4)	0.251
Coronary artery disease, n (%)	240 (60.9)	115 (65.7)	125 (57.1)	0.081
Atrial fibrillation, n (%)	167 (42.4)	46 (26.3)	121 (55.3)	<0.001
Previous history				
Previous myocardial infarction, n (%)	51 (12.9)	25 (14.3)	26 (11.9)	0.478
Previous cardiac surgery, n (%)	64 (16.2)	23 (13.1)	41 (18.7)	0.136
Previous stroke, n (%)	49 (12.4)	21 (12.0)	28 (12.8)	0.814
Previous permanent pacemaker implantation, n (%)	42 (10.7)	14 (8.0)	28 (12.8)	0.126
Peripheral artery disease, n (%)	57 (14.5)	26 (14.9)	31 (14.2)	0.844
Echocardiography				
Aortic Valve Area, cm ²	0.77 ± 0.26	0.76 ± 0.26	0.78 ± 0.26	0.466
Mean Aortic valve pressure gradient, mmHg	27 ± 8	27 ± 8	27 ± 8	0.518

Left ventricular ejection fraction, %	61 ± 7	63 ± 7	60 ± 7	<0.001
Left ventricular mass index, g/m ²	121 ± 41	119 ± 39	124 ± 41	0.304
Left atrial volume index, mL/m ²	42 ± 17	37 ± 14	46 ± 18	<0.001
Mitral regurgitation ≥moderate, n (%)	80 (20.6)	18 (10.3)	62 (29.0)	<0.001
Tricuspid regurgitation ≥moderate, n (%)	84 (21.6)	0 (0)	84 (39.1)	<0.001
Systolic pulmonary artery pressure, mmHg	46 ± 18	37 ± 13	53 ± 18	<0.001
Tricuspid annular plane systolic excursion, cm	19 ± 5	22 ± 4	17 ± 5	<0.001
Stroke volume index, mL/m ²	26 ± 6	26 ± 6	26 ± 6	0.784
Computed tomography				
Aortic valvular complex calcification, mm ³	206.3 ± 273.2	225.4 ± 244.5	189.1 ± 296.4	0.218
Right heart catheterisation				
Mean pulmonary artery pressure, mmHg	30 ± 12	24 ± 8	34 ± 13	<0.001
STS-PROM = Society of Thoracic Surgeons Predicted Risk of Mortality; NYHA = New York Heart Association; CKD = chronic kidney disease; eGFR = estimated glomerular filtration rate; COPD = chronic obstructive pulmonary disease.				

Supplementary Table 4. Baseline characteristics of normal-flow low-gradient aortic stenosis.

	Total	Early stage	Advanced stage	P-value
	N=314	N=152	N=162	
Age, years	81.5 ± 6.3	81.0 ± 6.5	82.0 ± 6.0	0.142
Female, n (%)	155 (49.4)	70 (46.1)	85 (52.5)	0.256
Body mass index, kg/cm ²	25.9 ± 5.1	25.4 ± 4.7	26.4 ± 5.4	0.083
STS-PROM, %	5.1 ± 3.5	4.8 ± 3.5	5.4 ± 3.5	0.114
NYHA III or IV, n (%)	197 (62.7)	85 (55.9)	112 (69.1)	0.016
Concomitant diseases				
Hypertension, n (%)	280 (89.2)	128 (84.2)	152 (93.8)	0.006
Diabetes mellitus, n (%)	76 (24.2)	33 (21.7)	43 (26.5)	0.318
CKD (eGFR <60 mL/min/1.73 m ²), n (%)	219 (70.0)	100 (65.8)	119 (73.9)	0.117
eGFR, mL/min/1.73 m ²	50.6 ± 22.5	52.8 ± 22.9	48.1 ± 22.0	0.069
COPD, n (%)	43 (13.7)	21 (13.9)	22 (13.6)	0.933
Coronary artery disease, n (%)	194 (61.8)	83 (54.6)	111 (68.5)	0.011
Atrial fibrillation, n (%)	104 (33.1)	46 (30.3)	58 (35.8)	0.297
Previous history				
Previous myocardial infarction, n (%)	40 (12.7)	16 (10.5)	24 (14.8)	0.225
Previous cardiac surgery, n (%)	57 (18.2)	20 (13.2)	37 (22.8)	0.026
Previous stroke, n (%)	44 (14.0)	23 (15.1)	21 (13.0)	0.580
Previous permanent pacemaker implantation, n (%)	28 (8.9)	11 (7.2)	17 (10.5)	0.312
Peripheral artery disease, n (%)	43 (13.7)	24 (15.8)	19 (11.7)	0.296
Echocardiography				
Aortic Valve Area, cm ²	0.85 ± 0.30	0.81 ± 0.29	0.88 ± 0.31	0.037
Mean Aortic valve pressure gradient, mmHg	28 ± 9	29 ± 8	27 ± 9	0.003

Left ventricular ejection fraction, %	63 ± 7	64 ± 7	62 ± 7	0.040
Left ventricular mass index, g/m ²	124 ± 41	122 ± 38	126 ± 44	0.527
Left atrial volume index, mL/m ²	42 ± 24	37 ± 12	47 ± 32	<0.001
Mitral regurgitation ≥moderate, n (%)	59 (19.2)	12 (8.0)	47 (29.7)	<0.001
Tricuspid regurgitation ≥moderate, n (%)	52 (16.7)	0 (0)	52 (32.3)	<0.001
Systolic pulmonary artery pressure, mmHg	43 ± 16	35 ± 13	50 ± 15	<0.001
Tricuspid annular plane systolic excursion, cm	21 ± 5	23 ± 4	20 ± 6	<0.001
Stroke volume index, mL/m ²	45 ± 12	45 ± 11	45 ± 12	0.698
Computed tomography				
Aortic valvular complex calcification, mm ³	200.3 ± 203.6	224.7 ± 215.5	173.9 ± 187.2	0.039
Right heart catheterisation				
Mean pulmonary artery pressure, mmHg	28 ± 9	23 ± 7	32 ± 9	<0.001
STS-PROM = Society of Thoracic Surgeons Predicted Risk of Mortality; NYHA = New York Heart Association; CKD = chronic kidney disease; eGFR = estimated glomerular filtration rate; COPD = chronic obstructive pulmonary disease.				

Supplementary Table 5. Clinical outcomes according to four cardiac stages in each AS subtype.

	HG-AS	Classical LF-LG	LF LG-AS with pEF	NFLG
	N=1045	N=337	N=394	N=314
All-cause mortality at 1 year				
Stage 0 and 1, n (%)	5 (3.6%) reference	2 (20.0%) reference	6 (9.8%) reference	5 (10.2%) reference
Stage 2, n (%)	30 (8.6%) HR 2.14 [0.83-5.54] <i>P</i> = 0.117	5 (7.8%) HR 0.35 [0.07-1.81] <i>P</i> = 0.210	11 (10.5%) HR 0.85 [0.31-2.35] <i>P</i> = 0.754	10 (11.6%) HR 1.06 [0.35-3.19] <i>P</i> = 0.920
Stage 3, n (%)	43 (16.6%) HR 3.73 [1.45-9.59] <i>P</i> = 0.006	13 (23.6%) HR 1.05 [0.23-4.72] <i>P</i> = 0.948	19 (20.0%) HR 1.34 [0.52-3.47] <i>P</i> = 0.544	12 (14.6%) HR 1.40 [0.49-4.01] <i>P</i> = 0.532
Stage 4, n (%)	46 (22.7%) HR 5.46 [2.11-14.13] <i>P</i> <0.001	44 (30.6%) HR 1.54 [0.36-6.56] <i>P</i> = 0.560	23 (24.5%) HR 1.64 [0.63-4.25] <i>P</i> = 0.311	11 (20.4%) HR 1.32 [0.45-3.92] <i>P</i> = 0.615
Cardiovascular mortality at 1 year				
Stage 0 and 1, n (%)	3 (2.1%) reference	0 (0%)	3 (4.9%) reference	1 (2.0%) reference
Stage 2, n (%)	18 (5.1%) HR 2.00 [0.58-6.84] <i>P</i> = 0.270	4 (6.3%) reference	8 (7.6%) HR 1.14 [0.30-4.37] <i>P</i> = 0.852	4 (4.7%) HR 2.41 [0.26-22.44] <i>P</i> = 0.441
Stage 3, n (%)	28 (10.8%) HR 3.54 [1.05-11.98] <i>P</i> = 0.042	8 (14.5%) HR 2.37 [0.72-7.68] <i>P</i> = 0.178	13 (13.7%) HR 1.69 [0.46-6.15] <i>P</i> = 0.427	8 (9.8%) HR 5.56 [0.68-45.30] <i>P</i> = 0.109
Stage 4, n (%)	31 (15.3%) HR 5.50 [1.62-18.66] <i>P</i> = 0.006	36 (25.0%) HR 4.38 [1.48-11.97] <i>P</i> = 0.008	18 (19.1%) HR 2.25 [0.62-8.15] <i>P</i> = 0.216	6 (11.1%) HR 3.59 [0.41-31.46] <i>P</i> = 0.248

All-cause mortality at 5 year				
Stage 0 and 1, n (%)	34 (26.7%) reference	6 (66.0%) reference	18 (34.3%) reference	14 (33.5%) reference
Stage 2, n (%)	130 (41.7%) HR 1.54 [1.05-2.25] <i>P</i> = 0.026	31 (54.4%) HR 0.62 [0.25-1.50] <i>P</i> = 0.287	45 (46.2%) HR 1.23 [0.70-2.15] <i>P</i> = 0.477	27 (35.8%) HR 0.92 [0.48-1.77] <i>P</i> = 0.796
Stage 3, n (%)	129 (57.0%) HR 2.35 [1.59-3.46] <i>P</i> <0.001	31 (67.2%) HR 0.81 [0.33-1.98] <i>P</i> = 0.643	51 (61.2%) HR 1.88 [1.08-3.28] <i>P</i> = 0.027	29 (47.6%) HR 1.36 [0.71-2.59] <i>P</i> = 0.359
Stage 4, n (%)	104 (54.8%) HR 2.28 [1.51-3.43] <i>P</i> <0.001	83 (64.5%) HR 1.00 [0.42-2.35] <i>P</i> = 0.996	55 (66.7%) HR 2.02 [1.16-3.52] <i>P</i> = 0.013	26 (50.4%) HR 1.31 [0.66-2.57] <i>P</i> = 0.439
Cardiovascular mortality at 5 year				
Stage 0 and 1, n (%)	23 (19.3%) reference	3 (52.9%) reference	10 (21.1%) reference	7 (18.9%) reference
Stage 2, n (%)	80 (29.8%) HR 1.41 [0.88-2.25] <i>P</i> = 0.149	23 (42.1%) HR 0.86 [0.26-2.91] <i>P</i> = 0.811	34 (38.4%) HR 1.54 [0.75-3.16] <i>P</i> = 0.241	18 (27.6%) HR 1.19 [0.49-2.88] <i>P</i> = 0.706
Stage 3, n (%)	93 (48.0%) HR 2.47 [1.54-3.94] <i>P</i> <0.001	22 (58.1%) HR 1.11 [0.33-3.78] <i>P</i> = 0.865	38 (52.0%) HR 2.45 [1.19-5.05] <i>P</i> = 0.015	20 (36.6%) HR 1.76 [0.74-4.18] <i>P</i> = 0.204
Stage 4, n (%)	73 (44.7%) HR 2.45 [1.49-4.03] <i>P</i> <0.001	69 (58.4%) HR 1.53 [0.47-5.00] <i>P</i> = 0.479	36 (50.2%) HR 2.25 [1.09-4.65] <i>P</i> = 0.029	18 (39.3%) HR 1.54 [0.62-3.81] <i>P</i> = 0.351
AS = aortic stenosis; HG = high gradient; LG = low gradient; LF = classical low flow; NF = normal flow; pEF = preserved ejection fraction; HR = hazard ratio. HR was adjusted by age, sex, Society of Thoracic Surgeons Predicted Risk of Mortality, left ventricular rejection fraction, New York Heart Association class III or IV, estimated glomerular filtration rate, and the year of transcatheter aortic valve implantation.				

Supplementary Table 6. Comparison of baseline characteristics between included and excluded patients.

	Included patients	Excluded patients	p-value
	N = 2090	N = 1496	
Age, years	82.0 ± 6.4	81.6 ± 6.3	0.007
Female, n (%)	1046 (50.1)	696 (46.4)	0.029
Body mass index, kg/cm ²	26.5 ± 5.2	27.0 ± 5.4	0.009
STS-PROM, %	5.8 ± 4.1	4.5 ± 3.8	<0.001
NYHA III or IV, n (%)	1410 (67.6)	874 (58.4)	<0.001
Concomitant diseases			
Hypertension, n (%)	1791 (85.8)	1343 (89.6)	<0.001
Diabetes mellitus, n (%)	561 (26.9)	413 (27.6)	0.656
CKD (eGFR <60 mL/min/1.73 m ²), n (%)	1442 (69.2)	938 (62.7)	<0.001
eGFR, mL/min/1.73 m ²	51.4 ± 21.6	52.1 ± 22.2	0.433
COPD, n (%)	264 (12.7)	132 (8.8)	<0.001
Coronary artery disease, n (%)	1245 (59.7)	828 (55.2)	0.008
Atrial fibrillation, n (%)	742 (35.6)	466 (31.1)	0.005
Previous history			
Previous myocardial infarction, n (%)	308 (14.8)	188 (12.5)	0.058
Previous cardiac surgery, n (%)	311 (14.9)	205 (13.7)	0.302
Previous stroke, n (%)	260 (12.5)	172 (11.5)	0.372
Previous permanent pacemaker implantation, n (%)	182 (8.7)	116 (7.7)	0.293
Peripheral artery disease, n (%)	299 (14.3)	165 (11.0)	0.003
Echocardiography			
Left ventricular ejection fraction, %	54 ± 14	56 ± 14	0.005
Aortic Valve Area, cm ²	0.73 ± 0.25	0.80 ± 0.28	<0.001
Mean Aortic valve pressure gradient, mmHg	40 ± 17	39 ± 17	0.344

AS = aortic stenosis; HG = high gradient; LG = low gradient; LF = classical low flow; NF = normal flow; pEF = preserved ejection fraction; STS-PROM = Society of Thoracic Surgeons Predicted Risk of Mortality; NYHA = New York Heart Association; CKD = chronic kidney disease; eGFR = estimated glomerular filtration rate; COPD = chronic obstructive pulmonary disease.