

Magnesium-based resorbable scaffold vs permanent metallic sirolimus-eluting stent in patients with ST-segment elevation myocardial infarction: 3-year results of the MAGSTEMI randomised controlled trial

Luis Ortega-Paz¹, MD, PhD; Salvatore Brugaletta¹, MD, PhD; Josep Gomez-Lara², MD, PhD; Fernando Alfonso³, MD, PhD; Angel Cequier², MD, PhD; Sebastián Romani⁴, MD; Pascual Bordes⁵, MD; Antonio Serra⁶, MD; Andrés Iñiguez⁷, MD; Pablo Salinas⁸, MD; Bruno García del Blanco⁹, MD, PhD; Javier Goicolea¹⁰, MD; Rosana Hernández-Antolín¹¹, MD; Javier Cuesta², MD; Joan Antoni Gómez-Hospital², MD, PhD; Manel Sabaté^{1,12*}, MD, PhD

1. Interventional Cardiology Department, Cardiovascular Institute, Hospital Clínic, Institut d'Investigacions Biomèdiques August Pi i Sunyer (IDIBAPS), Barcelona, Spain; 2. Hospital Universitario de Bellvitge, IDIBELL, Barcelona, Spain; 3. Hospital Universitario de La Princesa, Madrid, Spain; 4. Hospital San Pedro de Alcántara, Cáceres, Spain; 5. Hospital General de Alicante, Alicante, Spain; 6. Hospital de la Santa Creu i Sant Pau, Barcelona, Spain; 7. Hospital Alvaro Cunqueiro, Vigo, Spain; 8. Hospital Clínico San Carlos, Madrid, Spain; 9. Hospital Vall d'Hebrón, Barcelona, Spain; 10. Hospital Universitario Puerta de Hierro-Majadahonda, Madrid, Spain; 11. Hospital Ramón y Cajal, Madrid, Spain; 12. Centro de Investigación Biomédica en Red. Enfermedades Cardiovasculares (CIBERCV), Madrid, Spain

This paper also includes supplementary data published online at: <https://eurointervention.pconline.com/doi/10.4244/EIJ-D-21-00651>

KEYWORDS

- bioresorbable scaffold
- clinical trials
- drug-eluting stent
- STEMI

Abstract

Background: The long-term safety and performance of magnesium-based bioresorbable scaffolds (MgBRS) in ST-segment-elevation myocardial infarction (STEMI) patients are uncertain.

Aims: The aim of this study was to report the 3-year clinical outcomes of the MAGSTEMI trial.

Methods: This investigator-driven, multicentre, randomised, single-blind, controlled trial randomised STEMI patients 1:1 to MgBRS or to permanent metallic sirolimus-eluting stents (SES) at 11 academic centres. The main secondary endpoints included device-oriented composite endpoints (DoCE) and patient-oriented composite endpoints (PoCE), their individual components, any bleeding, and device thrombosis rate. All endpoints were defined according to the Academic Research Consortium. Events were adjudicated by an independent committee.

Results: Three-year clinical follow-up was obtained in 142 (90.0%) patients. At 3-year follow-up, MgBRS were associated with a higher rate of DoCE than SES (13 [17.6%] vs 5 [6.6%], diff -11.0 [95% CI: -21.3 to -0.7]; $p=0.038$). This difference was driven by an increased incidence of DoCE within the first year of follow-up. In the landmark analysis, there was no difference between 1 and 3 years (0 [0.0%] vs 1 [1.4%]; $p=1.000$). The difference in the rate of DoCE was driven by a higher incidence of target lesion revascularisation (TLR) in the MgBRS group compared to SES (12 [16.2%] vs 4 [5.3%]; diff -10.9% [95% CI: -20.7 to -1.2]; $p=0.030$). The difference in TLR was observed during the first year, with no further differences observed between 1 and 3 years (0 [0.0%] vs 1 [1.4%]; $p=1.000$).

Conclusions: At 3-year follow-up, MgBRS were associated with a higher rate of TLR, which was clustered within the first year, compared to SES.

*Corresponding author: Interventional Cardiology Department, Cardiovascular Institute, Hospital Clínic de Barcelona, c/ Villarroel 170, 08036, Barcelona, Spain. E-mail: masabate@ub.edu

Abbreviations

95% CI	95% confidence interval
BARC	Bleeding Academic Research Consortium definition
BRS	bioresorbable scaffold
DAPT	dual antiplatelet therapy
DoCE	device-oriented clinical endpoints
IRB	institutional review board
MAGSTEMI	MAGnesium-based Bioresorbable Scaffold in ST-Segment Elevation Myocardial Infarction
MgBRS	magnesium-based BRS
OCT	optical coherence tomography
PCI	percutaneous coronary intervention
PoCE	patient-oriented composite endpoints
SES	sirolimus-eluting stent
STEMI	ST-segment elevation myocardial infarction
TLR	target lesion revascularisation

Introduction

Patients treated with permanent metallic coronary stents may have an increased risk of device-related adverse events within the first 5 years of implantation¹. The concept of a completely bioresorbable scaffold (BRS) that provides a temporary scaffolding was proposed as an innovative solution to overcome these device-related events. Two types of BRS have been studied in randomised clinical trials: polymeric BRS (typically polylactide-based), which have been withdrawn from daily clinical practice due to safety concerns, and magnesium-based BRS (MgBRS).

The MAGSTEMI trial (ClinicalTrials.gov: NCT03234348) was the first randomised clinical trial comparing the performance of MgBRS versus permanent metallic sirolimus-eluting stents (SES) in patients with ST-segment elevation myocardial infarction (STEMI)². At 1-year follow-up, MgBRS were superior to SES in terms of vasomotor response capacity to pharmacological agents. However, MgBRS were associated with lower angiographic efficacy and a higher rate of target lesion revascularisation (TLR) without thrombotic safety concerns.

In the prespecified optical coherence tomography (OCT) sub-study of the MAGSTEMI trial, at 1 year, both MgBRS and SES exhibited a low degree of neointima healing. Still, lumen dimensions were smaller with MgBRS, assessed by means of OCT³. Although the advanced bioresorption state of MgBRS limited the evaluation, the scaffold collapse seemed to be the main mechanism of restenosis. Moreover, an OCT report has found MgBRS scaffold remnants present at 2.5-year follow-up which are potentially related to adverse events⁴.

With polymeric BRS, dual antiplatelet therapy (DAPT) during the first year after implantation was associated with a reduction in adverse events, without a clear benefit beyond 1-year follow-up⁵. It should be noted that there are no randomised data of the safety and performance of MgBRS in STEMI patients after 1-year follow-up, the timepoint at which DAPT is usually discontinued in STEMI patients.

We herein report the 3-year clinical outcomes of the MAGSTEMI trial beyond the 1 year of DAPT. Furthermore, we

aim to correlate the 1-year OCT vascular healing findings with the 3-year clinical outcomes.

Methods

STUDY DESIGN AND OVERSIGHT

The MAGSTEMI study was an investigator-initiated, multicentre, prospective and randomised clinical trial. This work was supported by the Spanish Heart Foundation. The complete trial design was reported previously⁶. Briefly, a total of 150 STEMI patients were randomised 1:1 to MgBRS or to SES in 11 academic hospitals. All patients were requested to undergo angiographic and vasomotor examination with nitroglycerine at 1-year follow-up. The study was approved by the Hospital Clinic of Barcelona institutional review board (IRB) and by the local IRBs of all the participating centres. All the patients provided written informed consent. The study was conducted in compliance with the study protocol, the Declaration of Helsinki, BS EN ISO 14155 Part 1 and Part 2, and applicable local requirements. The data that support the findings of this study are available from the corresponding author upon reasonable request.

STUDY POPULATION

We enrolled patients with STEMI who were undergoing primary percutaneous coronary intervention (PCI) and had one target lesion that was considered to be suitable for either MgBRS or SES implantation. All inclusion and exclusion criteria were reported elsewhere⁶.

OPTICAL COHERENCE TOMOGRAPHY

At 1-year follow-up, OCT imaging was performed after vasomotor examination with the Dragonfly OPTIS catheter (Abbott Vascular) according to standard procedures. OCT analysis was performed by a dedicated core laboratory (BARCICORE-lab, Barcelona, Spain) using specific software for analysis (LightLab Imaging; Abbott Vascular). The analysed segment included the stent region and the stent margins defined as the vessel segment 5 mm proximal and distal to the stent. One-year results were previously reported³. One-year quantitative OCT analysis results were previously reported³. Moreover, consensus on 1-year qualitative OCT analysis was agreed by 2 analysts (J. Gomez-Lara and L. Ortega-Paz). Scaffold discontinuity was defined as struts overhanging each other at the same angular sector, with or without malapposition, or isolated struts at the luminal centre without an obvious connection to other surrounding struts⁷. One-year qualitative OCT analysis results were previously reported³.

FOLLOW-UP

Patients will be followed up to 5 years after the index procedure. In this report, patients who completed 3-year follow-up were included in the analysis. The follow-up includes clinical visits or telephone contacts regarding cardiovascular drug use, hospitalisations, invasive or non-invasive diagnostic tests, and clinical events at 30 days, 6 months, 12 months, and annually up to 5 years.

STUDY ENDPOINTS

The primary endpoint was the in-stent/in-scaffold vasomotor response after nitroglycerine administration at 1 year (previously reported)². MgBRS demonstrated a better vasomotor response than SES but evidenced a higher rate of TLR that led to an increased rate of device-oriented clinical endpoints (DoCE)². Secondary endpoints were DoCE (composite of cardiac death, target vessel myocardial infarction, and ischaemia-driven target lesion revascularisation), patient-oriented composite endpoints (PoCE; composite of all-cause death, any myocardial infarction, and any revascularisation), their individual components, and stent/scaffold thrombosis, according to the Academic Research Consortium definition⁸. Bleeding events were defined according to the Bleeding Academic Research Consortium definition (BARC)⁹. Any bleeding was defined as BARC 1 to 5. An independent clinical events committee adjudicated adverse events. Revascularisation was considered ischaemia-driven if associated with any of the following: a non-invasive positive functional ischaemia study or an invasive positive ischaemia study; ischaemic symptoms and an angiographic minimal lumen diameter stenosis $\geq 50\%$ by online quantitative coronary angiography (QCA); or, a diameter stenosis $\geq 70\%$ by online QCA. All clinical endpoints were analysed by the “intention-to-treat” principle.

STATISTICAL ANALYSIS

The clinical variables at 3 years are presented as incidence (95% confidence interval [CI], using the Wald confidence interval) and were compared with the χ^2 or Fisher's exact test. For time-to-event variables, time-to-failure curves were constructed using Kaplan–Meier estimates, and log-rank test results are displayed. A two-tailed p-value < 0.05 was considered significant. The SAS v9.4 software was used for all analyses.

DATA SHARING

The data, analytic methods, and study materials will not be made available to other researchers for purposes of reproducing the results or replicating the procedure.

Results

The complete 3-year clinical follow-up was obtained in 142 (90.0%) patients. Following current guidelines, DAPT was withdrawn at 12 months unless clinically indicated (i.e., patients with repeat revascularisation within the first year). Consequently, at 3 years, 13 (9.6%) patients remained on DAPT, 10 (14.5%) in the MgBRS group versus 3 (4.5%) in the SES group ($p=0.051$). **Supplementary Figure 1** shows the yearly DAPT prescription throughout the trial. Overall, up to 2-year follow-up, DAPT prolongation was related to a higher rate of revascularisation in patients treated with MgBRS when compared to SES (11 [15.9%] vs 5 [6.6%]; $p=0.087$). Meanwhile, at 3-year follow-up, the main factor in the decision to prolong DAPT was the treating physician's recommendation (9 [13.0%] vs 3 [4.5%]; $p=0.064$).

CLINICAL OUTCOMES

Overall, at 3 years, MgBRS was associated with a higher rate of DoCE than SES (13 [17.6%] vs 5 [6.6%], diff -11.0% [95% CI: -21.3 to -0.7]; $p=0.038$). This difference was driven by an increased incidence of DoCE within the first year of follow-up (**Figure 1**). In the landmark analysis, there was no difference between 1 and 3 years (0 [0.0%] vs 1 [1.4%]; $p=1.000$) (**Figure 2**). The difference in the rate of DoCE was driven by a higher incidence of TLR in the MgBRS group compared to SES (12 [16.2%] vs 4 [5.3%]; diff -10.9% [95% CI: -20.7 to -1.2]; $p=0.030$) (**Figure 2**). Again, the difference in TLR was observed during the first year, with no further differences observed between 1 and 3 years (0 [0.0%] vs 1 [1.4%]; $p=1.000$) (**Figure 2**).

Rates of cardiac death were similar between MgBRS and SES (1 [1.4%] vs 1 [1.3%]; diff 0.1% [95% CI: -3.7 to 3.6]; $p=0.985$). In the landmark analysis, there were no cardiac deaths between 1- and 3-year follow-up. Similarly, rates of myocardial infarction were comparable at 3 years (2 [2.8%] vs 4 [5.3%]; diff 2.6% [95% CI: -3.7 to 8.8]; $p=0.424$) (**Figure 2**). In the landmark analysis, there was no difference between 1 and 3 years (1 [1.4%] vs 1 [1.4%]; $p=1.000$). Overall, the combined patient-oriented clinical endpoint was similar between groups at 3 years (18 [24.3%] vs 14 [18.4%]; diff -5.9% [95% CI: -1.9 to 0.07]; $p=0.378$) (**Figure 1**). In the landmark analysis, there was no difference between 1 and 3 years (1 [1.4%] vs 4 [6.2%]; $p=0.234$). Furthermore, at 3 years, there were no differences in the rates of definite/probable device thrombosis (1 [1.4%] vs 2 [2.6%]; $p=1.000$). Beyond 1 year, no instances of device thrombosis were observed in either group. Ultimately, at 3 years, there were no differences in the rates of any bleeding (7 [9.5%] vs 3 [3.9%]; diff -5.5 [95% CI: -13.5 to 2.5]; $p=0.176$) (**Table 1**). In the landmark analysis, there were no differences in any bleeding between 1 and 3 years (3 [3.9%] vs 1 [1.3%]; $p=0.294$) (**Supplementary Table 1**). In patients who experienced a bleeding event between 1 and 3 years, only one of them was on DAPT (aspirin and ticagrelor) (**Supplementary Table 2**).

1-YEAR SCAFFOLD DISCONTINUITY AND 3-YEAR CLINICAL OUTCOMES IN MgBRS

We did not find any association between the presence of scaffold discontinuities at 1 year assessed by means of OCT and clinical outcomes at 3-year follow-up (**Table 2**).

Discussion

Our main findings are 1) at 3-year follow-up, MgBRS were associated with a higher rate of DoCE compared to SES; 2) 1-year scaffold discontinuity OCT findings were not associated with 3-year clinical outcomes, 3) at 3-year follow-up, patients treated with MgBRS were more frequently on DAPT compared to those treated with SES (**Central illustration**).

Patients with STEMI have an increased risk of device-related adverse events mainly clustered within the 5 years of follow-up after primary PCI. However, beyond this period, non-device-related adverse events account for the majority of adverse events¹.

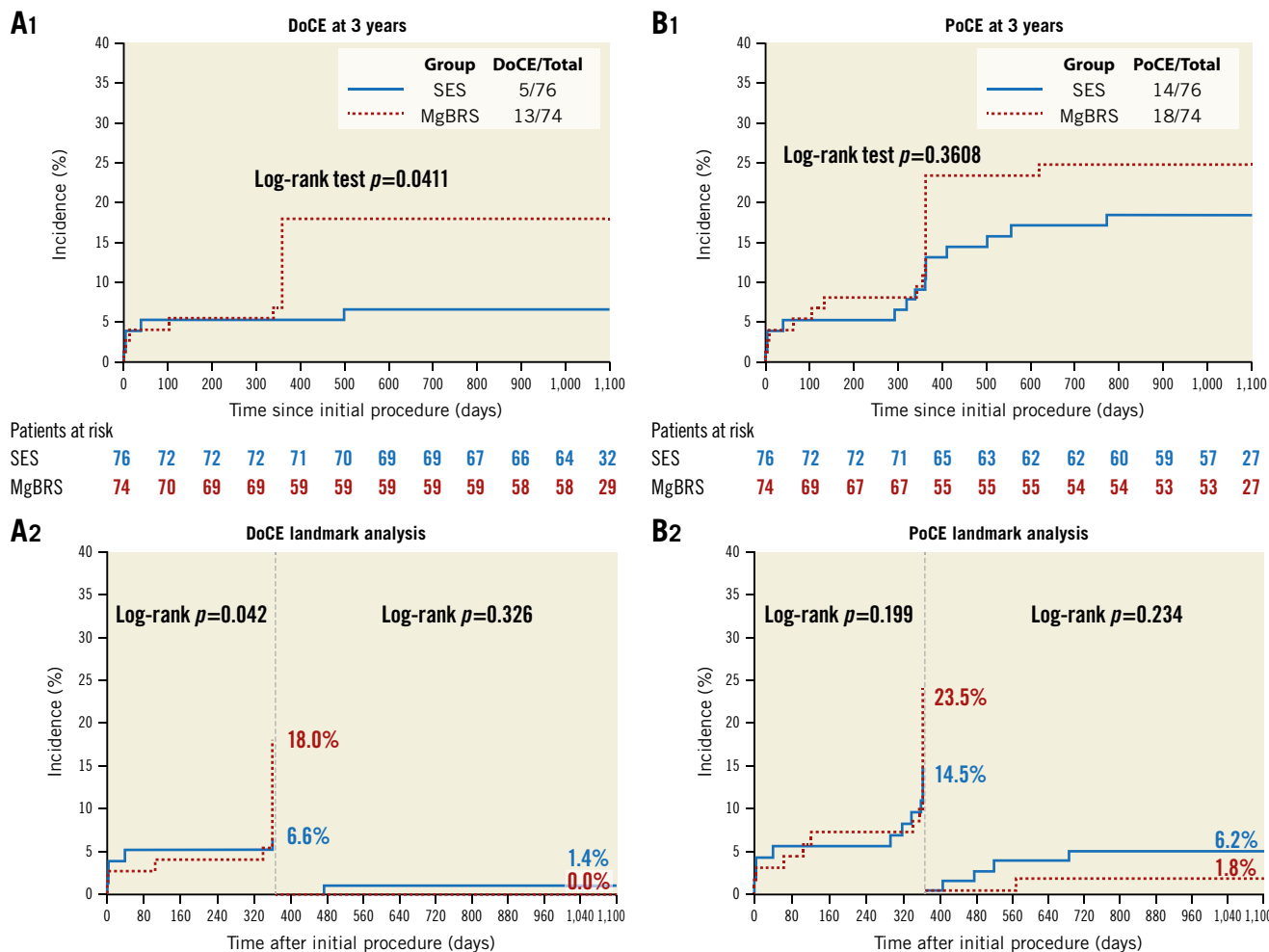


Figure 1. Time to failure curves of DoCE and PoCE between MgBRS vs SES in patients with STEMI. Device-oriented composite endpoint (DoCE) includes cardiac death, target vessel myocardial infarction, and target lesion revascularisation. Patient-oriented composite endpoint (PoCE) includes all-cause death, any myocardial infarction, and any revascularisation. MgBRS: magnesium-based resorbable scaffold; SES: permanent metallic sirolimus-eluting stent; STEMI: ST-segment elevation myocardial infarction

Table 1. Clinical outcomes at 3-year follow-up.

	Total N=150	SES N=76	MgBRS N=74	Difference (95% CI)	p-value
Device-oriented composite endpoint*	18 (12.0)	5 (6.6)	13 (17.6)	-11.0 (-21.3 to -0.7)	0.038
Patient-oriented composite endpoint [†]	32 (21.3)	14 (18.4)	18 (24.3)	-5.9 (-1.9 to 0.07)	0.378
Death	4 (2.7)	3 (3.9)	1 (1.4)	2.6 (-2.5 to 7.7)	0.324
Cardiac death	2 (1.3)	1 (1.3)	1 (1.4)	0.1 (-3.7 to 3.6)	0.985
Myocardial infarction	6 (4.0)	4 (5.3)	2 (2.7)	2.6 (-3.7 to 8.8)	0.424
Related with device thrombosis	3 (2.0)	2 (2.6)	1 (1.4)	1.3 (-3.2 to 5.7)	0.576
Spontaneous	3 (2.0)	2 (2.6)	1 (1.4)	1.3 (-3.2 to 5.7)	0.576
Definite/probable device thrombosis	3 (2.0)	2 (2.6)	1 (1.4)	1.2 (-3.2 to 5.7)	1.000
Re-percutaneous cardiac intervention	17 (11.3)	9 (11.8)	17 (23.0) [‡]	-11.2 (-23.2 to 0.9)	0.072
Target lesion revascularisation	16 (10.7)	4 (5.3)	12 (16.2)	-10.9 (-20.7 to -1.2)	0.030
Ischaemia driven	16 (10.7)	4 (5.3)	12 (16.2)	-10.9 (-20.7 to -1.2)	0.030
Target vessel revascularisation	21 (14.0)	6 (7.9)	15 (20.3)	-12.4 (-23.4 to -1.4)	0.029
Non-target vessel revascularisation	6 (4.0)	3 (3.9)	3 (4.1)	-0.2 (-6.4 to 6.2)	0.973
Any bleeding [§]	10 (6.7)	7 (9.5)	3 (4.1)	-5.5 (-13.5 to 2.5)	0.176

Values are n (%). *Device-oriented composite endpoint is defined as the composite of cardiac death, target vessel myocardial infarction, and target lesion revascularisation. [†]Patient-oriented composite endpoint is defined as the composite of all-cause death, any myocardial infarction, and any revascularisation. [‡]One patient had a non-target vessel and target lesion revascularisation. [§]Any bleeding was defined as BARC 1 to 5. 95% CI: 95% confidence interval; BARC: Bleeding Academic Research Consortium definition; MgBRS: magnesium-based bioresorbable scaffold; SES: sirolimus-eluting stent

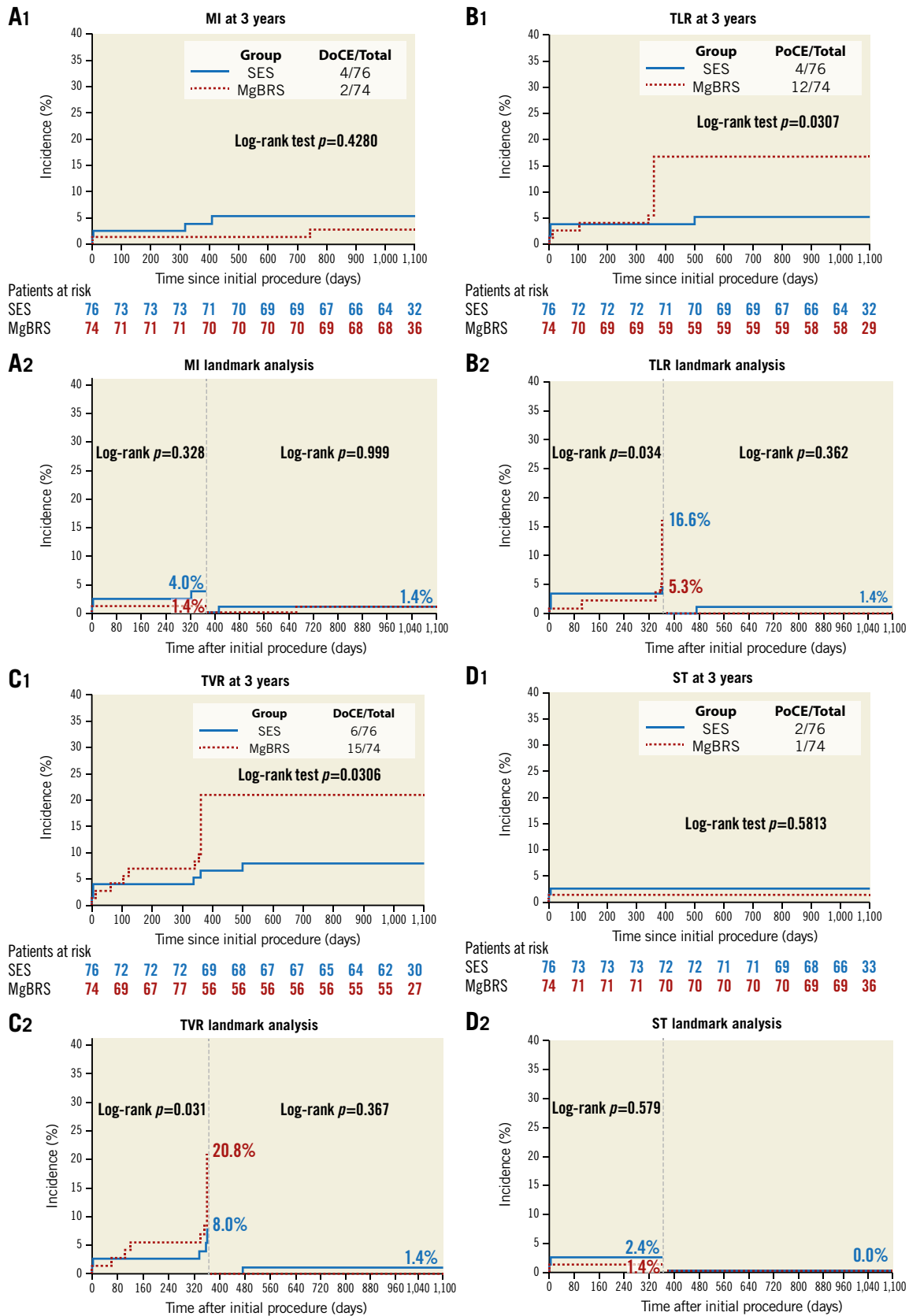


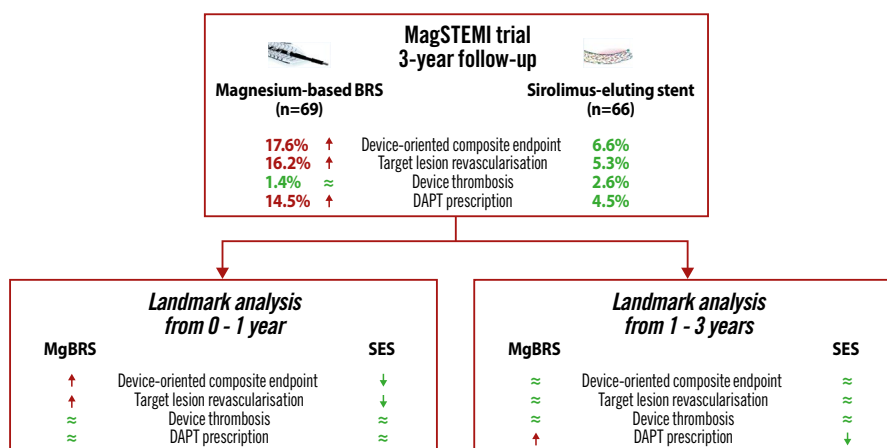
Figure 2. Time to failure curves of MI, TLR, TVR, and device thrombosis between MgBRS vs SES in patients with STEMI. Individual outcomes were defined according to the Academic Research Consortium definition. DoCE: device-oriented composite endpoint; MgBRS: magnesium-based resorbable scaffold; MI: myocardial infarction; PoCE: patient-oriented composite endpoint; SES: permanent metallic sirolimus-eluting stent; STEMI: ST-segment elevation myocardial infarction. TLR: target lesion revascularisation; TVR: target vessel revascularisation

Table 2. Clinical outcomes according to presence of scaffold discontinuity assessed by means of optical coherence tomography.

	Discontinuity (n=5)	No discontinuity (n=44)	Difference (95% CI)	p-value
Patient-oriented composite endpoint [†]	1 (20.0)	9 (20.5)	-0.5 (-37.5 to 36.6)	1.000
Device-oriented composite endpoint [‡]	1 (20.0)	5 (11.4)	8.6 (-27.7 to 44.9)	0.495
All-cause death	0 (0.0)	0 (0.0)	-	
Myocardial infarction	0 (0.0)	0 (0.0)	-	
Definite or probable device thrombosis	0 (0.0)	0 (0.0)	-	
Target lesion revascularisation	1 (20.0)	5 (11.4)	8.6 (-27.7 to 44.9)	0.495
Target vessel revascularisation	1 (20.0)	7 (15.9)	4.1 (-32.6 to 40.8)	1.000
Non-target vessel revascularisation	0 (0.0)	3 (6.8)	-6.8 (-14.3 to 0.6)	1.000

Data are presented as n (%). [†]Device-oriented composite endpoint is defined as the composite of cardiac death, target vessel myocardial infarction, and target lesion revascularisation. [‡]Patient-oriented composite endpoint is defined as the composite of all-cause death, any myocardial infarction, and any revascularisation. 95% CI: 95% confidence interval; MgBRS: magnesium-based bioresorbable scaffold; SES: sirolimus-eluting stent

EuroIntervention

CENTRAL ILLUSTRATION Three-year follow-up of the MAGnesium-based Bioresorbable Scaffold in ST-Segment Elevation Myocardial Infarction (MAGSTEMI; NCT03234348).

The red arrow (↑) denotes a statistically significant increase, the green approximation symbol (≈) denotes no statistical difference, and the green arrow (↓) denotes a significant decrease. DAPT: dual antiplatelet therapy; MgBRS: magnesium-based bioresorbable scaffold; SES: permanent metallic sirolimus-eluting stent

In the MAGSTEMI trial, we analysed the complete 3-year outcomes of patients treated with MgBRS versus SES. At 3-year follow-up, MgBRS were associated with a higher rate of DoCE compared to SES. This difference was mainly driven by an increased rate of TLR occurring within the first year. In the landmark analysis, there was a low rate of events in both groups. Between 1- and 3-year follow-up, there were no differences in the rate of DoCE between MgBRS and SES, neither in TLR nor in target vessel revascularisation.

Several OCT studies have suggested that the underlying mechanism of the MgBRS restenosis appeared to be the scaffold collapse^{3,10,11}. This highlights the need for increasing the radial force and resorption time of further iterations of this device, especially within the first year. Nevertheless, the underlying mechanism of late events is less well described with few reported cases⁴. In this regard, as complete resorption may be achieved at 1 year, with

a possible average of 3 years, the absence of the scaffold following complete resorption and its biocompatibility may be an advantage of MgBRS^{12,13}.

Interestingly, MgBRS did not exhibit any safety concerns (i.e., scaffold thrombosis or target vessel myocardial infarction) in this thrombogenic setting, especially considering the low rate of DAPT. This finding is in line with data obtained from a preclinical swine model of an arteriovenous shunt, including permanent SES, MgBRS, and polymer-based BRS. In this model, MgBRS showed less platelet coverage (3.0%) than SES (4.6%) and polymer-based BRS (21.8%)¹².

An earlier analysis of the MAGSTEMI trial reported the 1-year OCT findings of patients treated with MgBRS³. Scaffold discontinuities were observed in 10.4% of patients treated with MgBRS and 0% of those treated with SES. It should be noted that the effect of these 1-year scaffold discontinuity OCT findings on long-term clinical outcomes is uncertain. Accordingly, in this 3-year follow-up

report, we found that the presence of scaffold discontinuities at 1 year was not associated with impaired 3-year clinical outcomes.

At 3-year follow-up, patients treated with MgBRS were more frequently on DAPT than those treated with SES, without differences in bleeding events. Moreover, of those patients in whom DAPT was prolonged, only 1 experienced a bleeding event between 1- and 3-year follow-up. The primary factor in the decision to prolong DAPT was the treating physician's recommendation. In the polymeric BRS, the prolongation of DAPT up to the complete bioresorption (~3 years) was initially proposed to reduce the risk of device thrombosis^{14,15}. However, data from the ABSORB trials did not find any benefits of prolonging DAPT beyond 1 year⁵. According to the MgBRS bioresorption kinetics (~95% at 1 year) and the low incidence of device thrombosis events, prolonging DAPT beyond 1 year may not provide any additional benefits.

Ultimately, due to the high rate of early TLR events with the current generation of MgBRS and the low rate of device-related events with current generation SES, it is uncertain if the potential long-term benefit of the MgBRS will counterbalance its initial limitations. It is worth noting that this phenomenon was previously observed in the polymeric BRS¹⁶.

Limitations

A few limitations must be acknowledged. First, the trial was underpowered to sufficiently investigate secondary outcomes such as DoCE or PoCE components. Therefore, clinical outcomes can only be taken as hypothesis-generating. Secondly, DAPT was more often maintained at 3 years in the MgBRS group, mainly due to the decision of the treating physician. Therefore, we cannot rule out a protective role of DAPT on the low rate of thrombotic events at 3 years.

Conclusions

In conclusion, in the MAGSTEMI trial, MgBRS was associated with a higher rate of TLR, clustered within the first year of follow-up. A potentially favourable safety profile counterbalances this increased restenotic risk in terms of thrombotic events up to 3 years. Larger trials with new generation MgBRS powered to clinical events are warranted to understand this technology's potential.

Impact on daily practice

At long-term follow-up, the current generation of the magnesium-based bioresorbable scaffold (MgBRS) had a higher rate of device-oriented adverse outcomes compared to the permanent metallic sirolimus-eluting stent (SES) in STEMI patients. This difference was mainly driven by an increased rate of TLR occurring within the first year. It is worth noting that there were no differences between the MgBRS and the SES in the device thrombosis rate. With the current MgBRS and SES generations, it is uncertain if the potential long-term benefit of the MgBRS will counterbalance its initial limitations. An increase in the scaffolding duration and radial force of the device may contribute to overcoming the restenosis issues.

Funding

The funding source was the Spanish Heart Foundation. The promoter of the study had no role in the study design, providing only funds for independent data management (Efficacy SL, Madrid) and a core laboratory analysis centre (Barcore, Cardiac Imaging Corelab, Barcelona) for database management and all statistical analyses. The authors had unrestricted access to the data and vouch for the accuracy and completeness of the data and analyses and for the fidelity of the study to the protocol. The corresponding author had final responsibility for the decision to submit for publication.

Conflict of interest statement

M. Sabaté is a consultant for Abbott Vascular and iVascular. A. Cequier receives grants and personal fees from Abbott Vascular, Medtronic, Boston Scientific, and Biosensors. P. Salinas receives speaker fees from Terumo, Boston Scientific, AlviMedica, and Biomedco. S. Brugaletta is a consultant for Boston Scientific and iVascular, and his institution received a research grant from Astra-Zeneca. The other authors have no conflicts of interest to declare.

References

- Brugaletta S, Gomez-Lara J, Ortega-Paz L, Jiménez-Díaz V, Jimenez M, Jimenez-Quevedo P, Diletti R, Mainar V, Campo G, Silvestro A, Maristany J, Flores X, Oyarzabal L, De Miguel-Castro A, Iniguez A, Serra A, Nombela-Franco L, Ielasi A, Tespili M, Lenzen M, Gonzalo N, Bordes P, Tebaldi M, Biscaglia S, Rodriguez-Arias JJ, Al-Shaibani S, Arevalos V, Romaguera R, Gomez-Hospital JA, Serruys PW, Sabaté M. 10-Year Follow-Up of Patients With Everolimus-Eluting Versus Bare-Metal Stents After ST-Segment Elevation Myocardial Infarction. *J Am Coll Cardiol*. 2021;77:1165-78.
- Sabaté M, Alfonso F, Cequier A, Romani S, Bordes P, Serra A, Iniguez A, Salinas P, Garcia Del Blanco B, Goicolea J, Hernandez-Antolin R, Cuesta J, Gomez-Hospital JA, Ortega-Paz L, Gomez-Lara J, Brugaletta S. Magnesium-Based Resorbable Scaffold Versus Permanent Metallic Sirolimus-Eluting Stent in Patients With ST-Segment Elevation Myocardial Infarction: The MAGSTEMI Randomized Clinical Trial. *Circulation*. 2019;140:1904-16.
- Gomez-Lara J, Ortega-Paz L, Brugaletta S, Cuesta J, Romani S, Serra A, Salinas P, Garcia Del Blanco B, Goicolea J, Hernandez-Antolin R, Antuna P, Romaguera R, Regueiro A, Rivero F, Cequier A, Alfonso F, Gomez-Hospital JA, Sabaté M; Collaborators. Bioresorbable scaffolds versus permanent sirolimus-eluting stents in patients with ST-segment elevation myocardial infarction: vascular healing outcomes from the MAGSTEMI trial. *EuroIntervention*. 2020;16:e913-21.
- Ortega-Paz L, Brugaletta S, Sabaté M. Very-late restenosis of a magnesium-based resorbable scaffold. *Eur Heart J*. 2020;41:2602.
- Azzalini L, Ellis SG, Kereiakes DJ, Kimura T, Gao R, Onuma Y, Chevalier B, Dressler O, Crowley A, Zhou Z, Redfors B, Serruys PW, Stone GW. Optimal dual antiplatelet therapy duration for bioresorbable scaffolds: an individual patient data pooled analysis of the ABSORB trials. *EuroIntervention*. 2021;17:e981-8.
- Brugaletta S, Cequier A, Alfonso F, Iniguez A, Romani S, Serra A, Salinas P, Goicolea J, Bordes P, Del Blanco BG, Hernandez-Antolin R, Pernigotti A, Gomez-Lara J, Sabaté M. Magnesium-based bioresorbable scaffold and vasomotor function in patients with acute ST segment elevation myocardial infarction: The MAGSTEMI trial: Rationale and design. *Catheter Cardiovascular Interv*. 2019;93:64-70.
- Alfonso F, Cuesta J, Garcia-Guimaraes M and Rivero F. "Bumpy" neointima: the fingerprint of bioabsorbable magnesium scaffold resorption. *EuroIntervention*. 2019;15:e380-1.
- Cutlip DE, Windecker S, Mehran R, Boam A, Cohen DJ, van Es GA, Steg PG, Morel MA, Mauri L, Vranckx P, McFadden E, Lansky A, Hamon M, Krucoff MW, Serruys PW; Academic Research Consortium. Clinical end points in coronary stent trials: a case for standardized definitions. *Circulation*. 2007;115:2344-51.
- Mehran R, Rao SV, Bhatt DL, Gibson CM, Caixeta A, Eikelboom J, Kaul S, Wiviott SD, Menon V, Nikolsky E, Serebruany V, Valgimigli M, Vranckx P, Taggart D, Sabik JF, Cutlip DE, Krucoff MW, Ohman EM, Steg PG, White H. Standardized bleeding definitions for cardiovascular clinical trials: a consensus report from the Bleeding Academic Research Consortium. *Circulation*. 2011;123:2736-47.

10. Ortega-Paz L, Brugaletta S, Gomez-Lara J, Sanchis J, Fernandez-Diaz JA, Artai-Urdaci M, Alfonso F, Garcia-Garcia HM, Sabaté M. Target lesion revascularisation of bioresorbable metal scaffolds: a case series study and literature review. *EuroIntervention*. 2021;16:1100-3.
11. Ueki Y, Räber L, Otsuka T, Rai H, Losdat S, Windecker S, Garcia-Garcia HM, Landmesser U, Koolen J, Byrne R, Haude M, Joner M. Mechanism of Drug-Eluting Absorbable Metal Scaffold Restenosis: A Serial Optical Coherence Tomography Study. *Circ Cardiovasc Interv*. 2020;13:e008657.
12. Joner M, Ruppelt P, Zumstein P, Lapointe-Corriveau C, Leclerc G, Bulin A, Castellanos MI, Wittchow E, Haude M, Waksman R. Preclinical evaluation of degradation kinetics and elemental mapping of first- and second-generation bioresorbable magnesium scaffolds. *EuroIntervention*. 2018;14:e1040-8.
13. Heublein B, Rohde R, Kaese V, Niemeier M, Hartung W, Haverich A. Biocorrosion of magnesium alloys: a new principle in cardiovascular implant technology? *Heart*. 2003;89:651-6.
14. Ortega-Paz L, Brugaletta S, Sabaté M. Impact of PSP Technique on Clinical Outcomes Following Bioresorbable Scaffolds Implantation. *J Clin Med*. 2018;7:27.
15. Ortega-Paz L, Capodanno D, Gori T, Nef H, Latib A, Caramanno G, Di Mario C, Naber C, Lesiak M, Capranzano P, Wiebe J, Mehilli J, Araszkiwicz A, Pyxaras S, Mattesini A, Geraci S, Naganuma T, Colombo A, Münzel T, Sabaté M, Tamburino C, Brugaletta S. Predilation, sizing and post-dilation scoring in patients undergoing everolimus-eluting bioresorbable scaffold implantation for prediction of cardiac adverse events: development and internal validation of the PSP score. *EuroIntervention*. 2017;12:2110-7.
16. Capodanno D, Buccheri S, Romano S, Capranzano P, Francaviglia B, Tamburino C. Decision Analytic Markov Model Weighting Expected Benefits and Current Limitations of First-Generation Bioresorbable Vascular Scaffolds: Implications for Manufacturers and Next Device Iterations. *Circ Cardiovasc Interv*. 2018;11:e005768.

Supplementary data

Supplementary Table 1. Yearly dual antiplatelet therapy prescription rate in the MAGSTEMI trial according to allocation.

Supplementary Table 2. Bleeding events at 3-year follow-up according to allocated device and antiplatelet therapy at the moment of the event.

Supplementary Figure 1. Yearly dual antiplatelet therapy prescription in the MAGSTEMI trial according to its relationship with adverse events and allocation.

The supplementary data are published online at:
[https://eurointervention.pronline.com/
doi/10.4244/EIJ-D-21-00651](https://eurointervention.pronline.com/doi/10.4244/EIJ-D-21-00651)



Supplementary data

Supplementary Table 1. Yearly dual antiplatelet therapy prescription rate in the MAGSTEMI trial according to allocation.

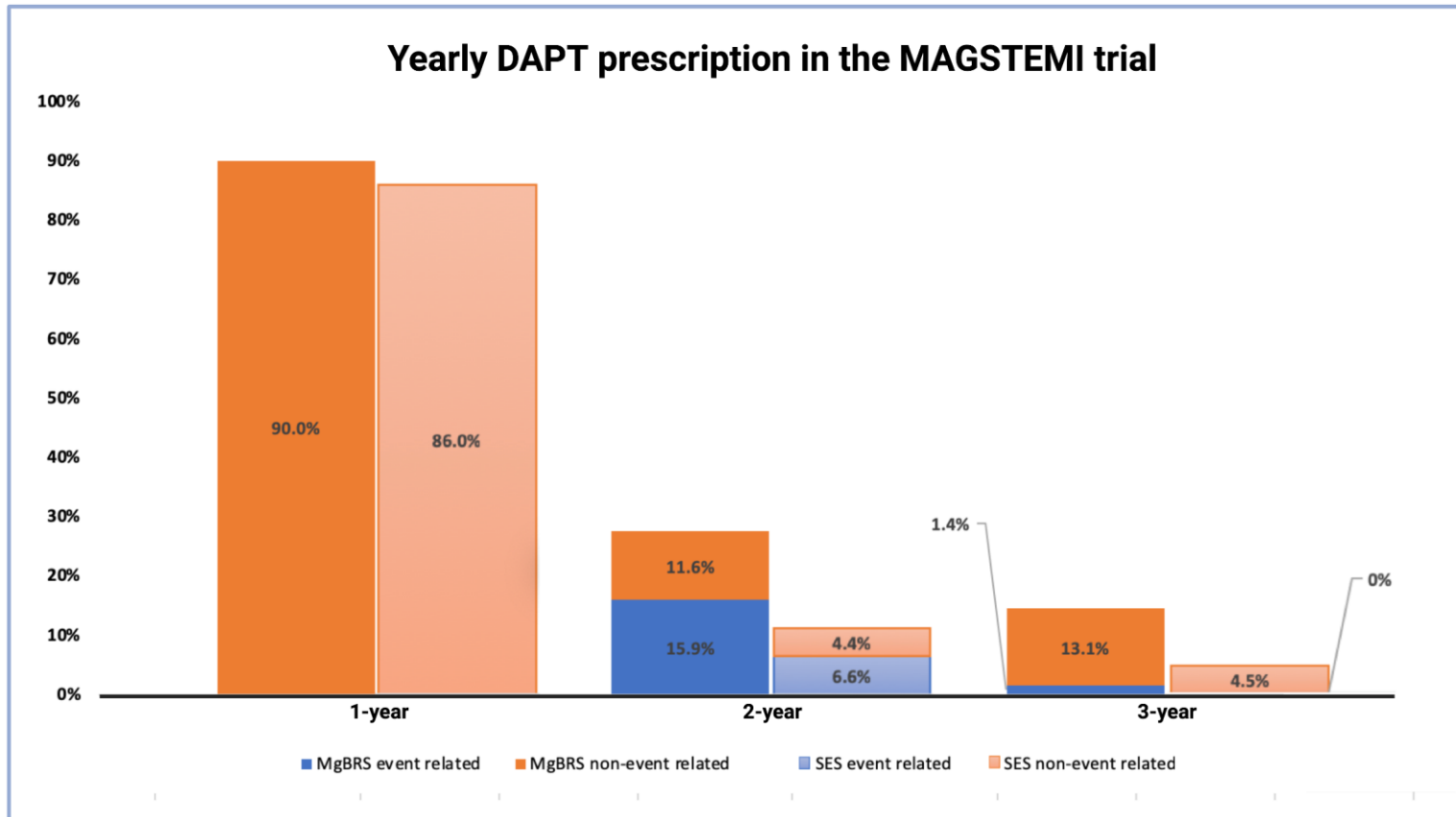
	MgBRS (n=74)	SES (n=76)	Difference (95% CI)	p-value
1-year	4 (5.4%)	2 (2.6%)	-2.8 (-9.1 to 3.5)	0.386
2-year	6 (8.1%)	2 (2.6%)	5.5 (-12.7 to 1.7)	0.136
3-year	7 (9.5)	3 (3.9)	-5.5 (-13.5 to 2.5)	0.176

95% CI: 95% confidence interval; MgBRS: magnesium-based bioresorbable scaffold; SES: permanent metallic sirolimus-eluting stent

Supplementary Table 2. Bleeding events at 3-year follow-up according to allocated device and antiplatelet therapy at the moment of the event.

Patient	Device	Time to event (months)	Antiplatelet therapy at the moment of the event
1	MgBRS	1.0	Aspirin+clopidogrel
2	MgBRS	3.2	Aspirin
3	MgBRS	3.3	Aspirin+clopidogrel
4	SES	4.5	Aspirin
5	MgBRS	5.9	Aspirin+ticagrelor
6	SES	10.6	Aspirin+prasugrel
7	MgBRS	18.3	Aspirin
8	MgBRS	20.2	Aspirin
9	SES	25.6	Aspirin+ticagrelor
10	MgBRS	27.7	Aspirin

MgBRS: magnesium-based bioresorbable scaffold; SES: permanent metallic sirolimus-eluting stent



Supplementary Figure 1. Yearly dual antiplatelet therapy prescription in the MAGSTEMI trial according to its relationship with adverse events and allocation.

DAPT: dual antiplatelet therapy; MgBRS: magnesium-based bioresorbable scaffold; SES: permanent metallic sirolimus-eluting stent