

Long-term outcomes of measured and predicted prosthesis-patient mismatch following transcatheter aortic valve replacement

Daijiro Tomii¹, MD; Taishi Okuno¹, MD; Dik Heg², PhD; Masaaki Nakase¹, MD; Jonas Lanz¹, MD, MSc; Fabien Praz¹, MD; Stefan Stortecky¹, MD, MPH; David Reineke³, MD; Stephan Windecker¹, MD; Thomas Pilgrim^{1*}, MD, MSc

1. Department of Cardiology, Bern University Hospital, Inselspital, University of Bern, Bern, Switzerland; 2. CTU Bern, University of Bern, Bern, Switzerland; 3. Department of Cardiovascular Surgery, Bern University Hospital, Inselspital, University of Bern, Bern, Switzerland

This paper also includes supplementary data published online at: <https://eurointervention.pconline.com/doi/10.4244/EIJ-D-23-00456>

KEYWORDS

- aortic stenosis
- imaging modalities
- MSCT
- other
- TAVR
- transthoracic echocardiogram

Abstract

Background: Both measured and predicted effective orifice area (EOA) indexed to the body surface area (EOAi) have been suggested to define prosthesis-patient mismatch (PPM) in patients undergoing transcatheter aortic valve replacement (TAVR). The impact of PPM on clinical outcomes may accumulate with extended follow-up and vary according to the definition used.

Aims: We aimed to investigate the long-term clinical impact of PPM in patients undergoing TAVR.

Methods: Patients in a prospective TAVR registry were stratified by the presence of moderate (0.65-0.85 or 0.55-0.70 cm²/m² if obese) or severe (≤ 0.65 or ≤ 0.55 cm²/m² if obese) PPM according to echocardiographically measured EOAI (measured PPM), predicted EOAI based on published EOA reference values for each valve model and size (predicted PPM_{THV}), or predicted EOAI based on EOA reference values derived from computed tomography measurements of aortic annulus dimensions (predicted PPM_{CT}).

Results: In an analysis of 2,463 patients, the frequency of measured PPM (moderate: 27.0%; severe: 8.7%) was higher than the frequency of predicted PPM_{THV} (moderate: 11.3%; severe: 1.2%) or predicted PPM_{CT} (moderate: 12.0%; severe: 0.1%). During a median follow-up of 429 days, 10-year mortality was comparable in patients with versus without measured PPM or predicted PPM_{CT}. In contrast, patients with moderate predicted PPM_{THV} had a lower risk of 10-year all-cause mortality compared with those without PPM (adjusted hazard ratio: 0.73, 95% confidence interval: 0.55-0.96).

Conclusions: The use of predicted versus measured EOAI results in a lower estimate of PPM severity. We observed no increased risk of death in patients with PPM over a median follow-up time of 429 days. ClinicalTrials.gov: NCT01368250.

*Corresponding author: Department of Cardiology, Bern University Hospital, Inselspital, University of Bern, Freiburgstrasse 18, 3010 Bern, Switzerland. E-mail: thomas.pilgrim@insel.ch

Abbreviations

EOA	effective orifice area
EOA_{CT}	predicted EOA based on the normal reference values of EOA derived from aortic annulus dimensions measured by preprocedural computed tomography
EOAi	effective orifice area indexed to body surface area
EOA_{THV}	predicted EOA based on the normal reference values of EOA for each size and type of implanted transcatheter heart valve
PPM	prosthesis-patient mismatch
PPM_{CT}	PPM defined by predicted EOA derived from preprocedural computed tomography
PPM_{THV}	PPM defined by predicted EOA for each size and model of implanted transcatheter heart valve
TAVR	transcatheter aortic valve replacement

Introduction

Prosthesis-patient mismatch (PPM) is a condition in which the effective orifice area (EOA) of a normally functioning prosthesis is too small relative to the patient's body surface area (BSA), resulting in a high residual transprosthetic pressure gradient. In surgical series, PPM has been associated with adverse clinical outcomes after surgical aortic valve replacement (SAVR)¹⁻³. However, the impact of PPM in the transcatheter aortic valve replacement (TAVR) population remains controversial because of differences in the methods used to ascertain PPM⁴.

In SAVR series, PPM has been based on predicted EOA, calculated by dividing the EOA reference value, indicated by the manufacturer for the prosthesis model and size, by the BSA. In contrast, previous TAVR studies have mainly defined PPM using EOA measured directly by transthoracic echocardiography (measured PPM)⁵⁻⁸. Recent TAVR studies have suggested that the use of measured EOA overestimates the frequency of PPM compared to the use of predicted EOA and that predicted EOA more accurately determines the frequency of PPM and may, hence, be more useful to assess the impact on outcomes⁹⁻¹¹. Available evidence is, however, limited in terms of duration of follow-up and the spectrum of transcatheter heart valve (THV) types included. Therefore, the present study aimed to systematically evaluate the long-term clinical outcomes of patients stratified according to PPM, assessed by measured and predicted EOA in a prospective TAVR registry including different valve types and generations.

Editorial, see page 707

Methods

STUDY DESIGN AND POPULATION

The Bern TAVI Registry is a prospective TAVR registry enrolling consecutive patients undergoing TAVR for severe, symptomatic aortic stenosis at Bern University Hospital, Switzerland, which forms part of the nationwide SwissTAVI Registry (ClinicalTrials.gov: NCT01368250)¹². The present analysis included patients who underwent TAVR with balloon-expandable (SAPIEN XT, SAPIEN 3, SAPIEN 3 Ultra [Edwards Lifesciences]) or self-expanding devices

(CoreValve, Evolut R/PRO/PRO Plus [Medtronic]) between August 2007 and June 2022. For the purpose of the present study, patients who underwent intervention but had no device implanted, those who were treated with non-study devices, and patients with incomplete information for the assessment of PPM (body mass index [BMI], BSA, or measured EOA at discharge) were excluded. The registry was approved by the Bern Cantonal Ethics Committee, and patients provided written informed consent to participate.

DEFINITION OF PPM

PPM was classified on the basis of EOA indexed to BSA (EOAi) as none (EOAi >0.85 cm²/m²), moderate (EOAi >0.65 and ≤0.85 cm²/m²) or severe (EOAi ≤0.65 cm²/m²) in the non-obese population, and as none (EOAi >0.70 cm²/m²), moderate (EOAi >0.55 and ≤0.70 cm²/m²), or severe (EOAi ≤0.55 cm²/m²) in the obese population (BMI ≥30 kg/m²)¹³.

ASSESSMENT OF EOA

Comprehensive transthoracic echocardiography using a Philips iE33 machine (Philips Healthcare) was performed by a board-certified cardiologist and echocardiography specialist before TAVR and prior to discharge. Measured EOA was calculated using the continuity equation indexed to BSA^{14,15}; the EOA was calculated using the left ventricular stroke volume, derived as the out-to-out border of the stented valve, multiplied by the pulsed-wave Doppler time-velocity integral of flow at that location. Predicted EOA was assessed using two different derived methods. The first method was based on the reference values of EOA indicated by the published data for each size and type of implanted THV (predicted EOA_{THV}) (**Supplementary Table 1**). The second method was used in patients who underwent TAVR with SAPIEN 3/3 Ultra, CoreValve, or Evolut R/PRO/PRO Plus and was based on the reference values of EOA derived from aortic annulus dimensions measured by preprocedural computed tomography (CT; predicted EOA_{CT}) (**Supplementary Table 2**). The reference values for predicted EOA were derived from published data, which were calculated using data from pooled cohorts of the randomised clinical trials⁹⁻¹¹. Preprocedural CT examinations were independently re-evaluated by dedicated imaging specialists, and the measurements were integrated into the database¹⁶.

DATA COLLECTION AND CLINICAL ENDPOINTS

All baseline clinical, procedural, and follow-up data were prospectively recorded in a dedicated database, held at the Clinical Trials Unit at the University of Bern, Switzerland. In the SwissTAVI Registry, regular follow-up is standardised at 30 days, 1 year, 5 years, and 10 years¹⁷. A clinical events committee independently adjudicated all adverse events according to the Valve Academic Research Consortium (VARC) definitions^{18,19}. An independent clinical trials unit is responsible for central data monitoring to verify the completeness and accuracy of the data and for statistical analysis. The outcomes of interest in the present study included all-cause and cardiovascular mortality, structural valve

deterioration, and unplanned repeat aortic valve intervention at 1, 5, and 10 years after TAVR. Structural valve deterioration was defined according to the VARC criteria between 2007 and 2013 and has since been defined according to the VARC-2 criteria^{18,19}. Unplanned repeat aortic valve intervention was defined as a composite of valve-in-valve procedure, balloon valvuloplasty, surgical revision, or paravalvular leak closure.

STATISTICAL ANALYSIS

Categorical variables are presented as frequencies and percentages, and the differences between groups were evaluated with the chi-square test or Fisher's exact test. Continuous variables are presented as mean values±standard deviation (SD) and compared between groups using an F test from an analysis of variance (ANOVA). Risk ratios with 95% confidence intervals (95% CI) from Poisson regressions were provided where appropriate. Time-to-event curves were constructed using the Kaplan-Meier method. Univariable and multivariable Cox proportional hazards models were used to calculate hazard ratios (HR) and 95% CIs for the clinical outcomes. Multivariable adjustment was performed with predefined baseline variables potentially related to clinical outcomes, including age, sex, and the Society of Thoracic Surgeons Predicted Risk of Mortality (STS-PROM). It was anticipated that traditional Cox proportional hazards models may overestimate event rates when competing with death in this elderly population with relevant comorbidities. To account for this limitation, the Fine and Gray method was used to model the cumulative incidence function of the outcomes of interest in the present study and to determine the subdistribution HR (sHR) under competing risk of death or, in the case of cardiovascular death, under competing risk of non-cardiovascular death^{20,21}. All statistical tests were

2-sided and p-values<0.05 were considered significant. Statistical analyses were performed using Stata v17 (StataCorp).

Results

STUDY POPULATION AND FREQUENCY OF PPM

Among 3,586 consecutive patients enrolled into the prospective Bern TAVI Registry, 2,463 patients were available for the analysis of measured PPM and predicted PPM defined by predicted EOA_{THV} (predicted PPM_{THV}); 1,570 patients were available for the analysis of predicted PPM based on predicted EOA_{CT} (predicted PPM_{CT}) (**Supplementary Figure 1**). The frequency of moderate and severe PPM according to measured EOAI was 27.0% and 8.7%, respectively. According to predicted EOA_{THV}, the frequency of moderate and severe PPM_{THV} was 11.3% and 1.2%, respectively. Using predicted EOA_{CT}, the frequency of moderate and severe predicted PPM_{CT} was 12.0% and 0.1%, respectively (**Table 1, Central illustration**). The frequency of moderate and severe PPM was lower in the obese population compared with the non-obese population regardless of the method of assessment, with the exception of severe measured PPM, which was comparable between the groups (8.9% vs 8.7%; p=0.865) (**Table 1, Supplementary Table 3** shows the frequency of PPM according to THV type. Balloon-expandable valves had a higher frequency of moderate or severe PPM, whereas severe predicted PPM_{THV} was observed only in self-expanding valves.

Baseline and procedural characteristics according to measured PPM and predicted PPM_{THV} are shown in **Supplementary Table 4**. Overall, 1,154 patients (46.9%) were female, the mean age of the cohort was 82±6 years, and the STS-PROM was 5.0±3.9%; 22.8% of patients were obese. TAVR was performed by transfemoral access in 93.6% of patients, and the distribution of balloon-expandable and

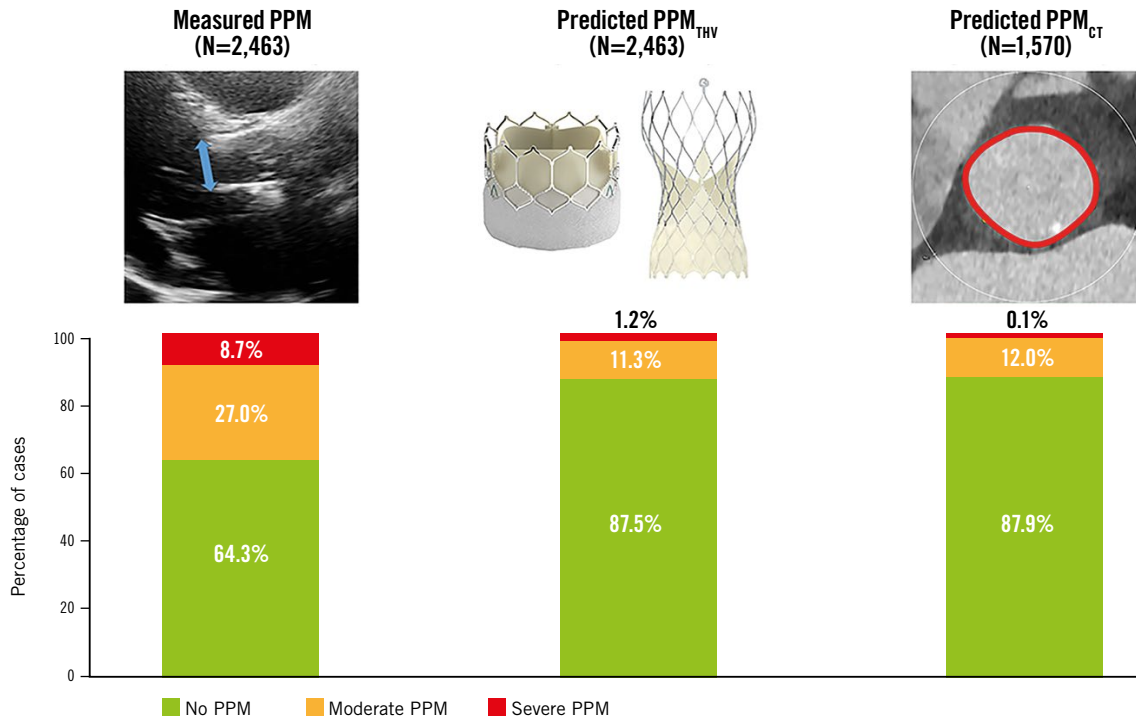
Table 1. Frequency of PPM according to the method of the definition of PPM.

	All patients (N=2,463)	Patients with BMI <30 kg/m ² (N=1,902)	Patients with BMI ≥30 kg/m ² (N=561)	p-value
Measured PPM				
Measured EOAI, cm ² /m ²	0.95±0.29	0.98±0.29	0.82±0.24	<0.001
Moderate or severe measured PPM	879 (35.7)	699 (36.8)	180 (32.1)	0.045
Moderate measured PPM	664 (27.0)	534 (28.1)	130 (23.2)	0.023
Severe measured PPM	215 (8.7)	165 (8.7)	50 (8.9)	0.865
Predicted PPM_{THV}				
Predicted EOAI _{THV} , cm ² /m ²	0.96±0.15	0.99±0.15	0.84±0.11	<0.001
Moderate or severe predicted PPM _{THV}	308 (12.5)	262 (13.8)	46 (8.2)	<0.001
Moderate predicted PPM _{THV}	279 (11.3)	235 (12.4)	44 (7.8)	0.003
Severe predicted PPM _{THV}	29 (1.2)	27 (1.4)	2 (0.4)	0.043
Predicted PPM_{CT}				
	N=1,570	N=1,220	N=350	
Predicted EOAI _{CT} , cm ² /m ²	0.97±0.15	1.0±0.15	0.84±0.11	<0.001
Moderate or severe predicted PPM _{CT}	190 (12.1)	160 (13.1)	30 (8.6)	0.020
Moderate predicted PPM _{CT}	189 (12.0)	159 (13.0)	30 (8.6)	0.025
Severe predicted PPM _{CT}	1 (0.1)	1 (0.1)	0 (0.0)	1.000
Values are mean±standard deviation or n (%). BMI: body mass index; EOAI: effective orifice area indexed to body surface area; EOAI _{CT} : predicted EOA based on the normal reference values of EOA derived from aortic annulus dimensions measured by preprocedural computed tomography; EOAI _{THV} : predicted EOA based on the normal reference values of EOA for each size and type of implanted transcatheter heart valve; PPM: prosthesis-patient mismatch; PPM _{CT} : PPM defined by predicted EOA derived from preprocedural computed tomography; PPM _{THV} : PPM defined by predicted EOA for each size and model of implanted transcatheter heart valve				

CENTRAL ILLUSTRATION Measured and predicted PPM after TAVR.

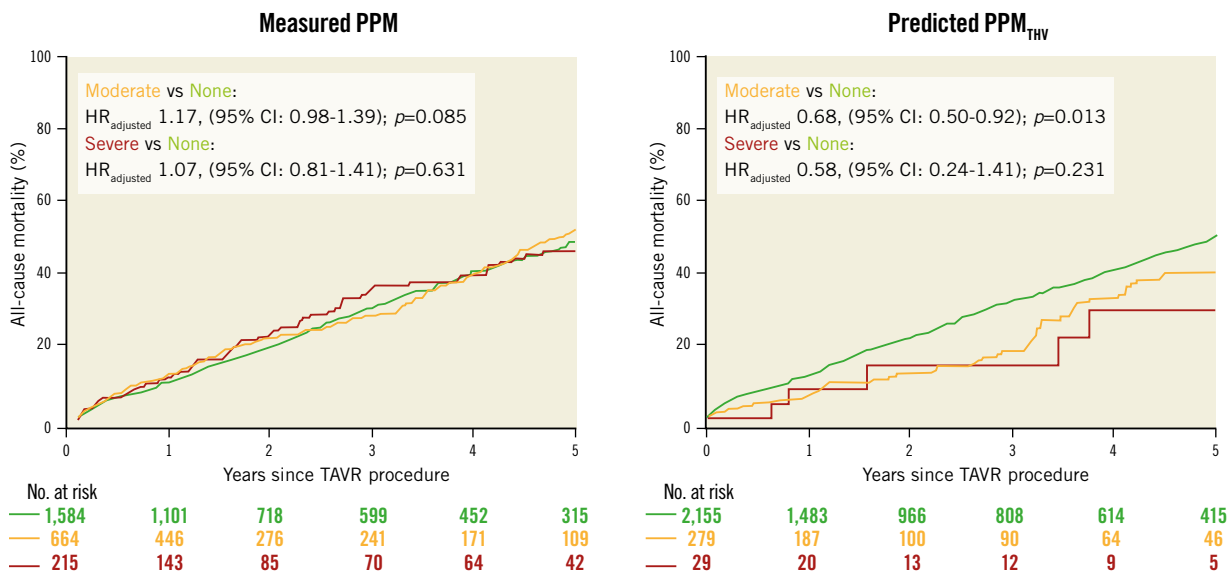
A

Frequency of PPM after TAVR in the Bern TAVI Registry (2007-2022)



B

Long-term clinical impact of measured and predicted PPM



Frequency of PPM according to type and severity after TAVR (A), and cumulative event curves for all-cause mortality according to type and severity of PPM (B). Hazard ratios and p-values were calculated with the use of Cox proportional hazards models. CI: confidence interval; EOA: effective orifice area; HR_{adjusted}: adjusted hazard ratio; PPM: prosthesis-patient mismatch; PPM_{CT}: PPM defined by the normal reference values of EOA derived from aortic annulus area/perimeter measured by preprocedural computed tomography; PPM_{THV}: PPM defined by the normal reference values of EOA for each size and model of implanted transcatheter heart valve; TAVR: transcatheter aortic valve replacement; THV: transcatheter heart valve

self-expanding devices was 63.0% and 37.0%, respectively. Valve-in-valve procedures were performed in 129 patients (5.2%). Patients with moderate or severe measured PPM more commonly had balloon-expandable valves than those without PPM (67.0% vs 71.5% vs 58.8%; $p < 0.001$). In contrast, all patients with severe predicted PPM_{THV} had self-expanding valves with a small valve size (≤ 23 mm).

POSTPROCEDURAL HAEMODYNAMICS

Postprocedural haemodynamics in patients with measured PPM and predicted PPM_{THV} are summarised in **Supplementary Table 5**. Patients with moderate or severe PPM, defined by either method, had higher mean prosthetic gradients (13.4±6.4 mmHg vs 11.5±4.4 mmHg vs 9.1±4.0 mmHg in measured PPM and 13.6±6.7 mmHg vs 13.4±5.4 mmHg vs 9.7±4.3 mmHg in predicted PPM_{THV}; both p -values < 0.001) and a higher prevalence of high residual gradient (mean prosthesis gradient ≥ 20 mmHg: 14.6% vs 5.2%

vs 1.1% in measured PPM and 10.3% vs 12.0% vs 2.1% in predicted PPM_{THV}; both p -values < 0.001). Measured EOAI was lower in patients with severe or moderate predicted PPM_{THV} compared to those with no predicted PPM_{THV} (0.75±0.19 cm²/m² vs 0.82±0.29 cm²/m² vs 0.96±0.26 cm²/m²; $p < 0.001$). There was no significant difference in the rate of moderate or severe paravalvular regurgitation. Although the stroke volume index and left ventricular ejection fraction were lower in patients with moderate and severe measured PPM compared with those with no PPM (29.8±10.8 mL/m² vs 32.3±8.3 mL/m² vs 40.0±11.7 mL/m²; $p < 0.001$ and 52.4±15.8% vs 54.1±13.5% vs 57.1±12.9%; $p < 0.001$, respectively), these differences were not observed in the analysis of predicted PPM_{THV}.

CLINICAL OUTCOMES

Clinical outcomes at 1, 5, and 10 years according to PPM by any definition are summarised in **Table 2**, **Table 3**, **Table 4**, and

Table 2. Clinical outcomes according to the method for the definition of PPM.

		Measured PPM						
		None (N=1,584)	Moderate (N=664)	Severe (N=215)	Moderate vs none		Severe vs none	
					Adjusted HR (95% CI)	<i>p</i> -value	Adjusted HR (95% CI)	<i>p</i> -value
At 1 year	All-cause death	154 (10.5)	76 (12.2)	24 (11.8)	1.20 (0.91-1.58)	0.198	1.16 (0.75-1.78)	0.509
	Cardiovascular death	94 (6.5)	51 (8.4)	16 (8.1)	1.33 (0.94-1.87)	0.106	1.29 (0.76-2.19)	0.352
	Structural valve deterioration	23 (1.7)	10 (1.7)	5 (2.5)	1.02 (0.49-2.15)	0.956	1.54 (0.58-4.05)	0.384
	Repeat aortic valve intervention	11 (0.7)	5 (0.8)	4 (1.9)	1.07 (0.37-3.08)	0.90	2.52 (0.80-7.94)	0.114
At 5 years	All-cause death	413 (52.8)	178 (58.3)	58 (51.5)	1.17 (0.98-1.39)	0.085	1.07 (0.81-1.41)	0.631
	Cardiovascular death	275 (40.0)	128 (46.9)	40 (39.7)	1.26 (1.02-1.56)	0.029	1.13 (0.81-1.58)	0.473
	Structural valve deterioration	30 (4.6)	15 (6.2)	9 (11.4)	1.37 (0.74-2.55)	0.319	1.92 (0.91-4.05)	0.088
	Repeat aortic valve intervention	15 (2.3)	6 (2.5)	5 (5.8)	1.12 (0.43-2.89)	0.818	2.11 (0.76-5.83)	0.149
At 10 years	All-cause death	493 (84.3)	204 (89.7)	67 (94.6)	1.17 (1.00-1.38)	0.055	1.19 (0.92-1.54)	0.187
	Cardiovascular death	344 (77.2)	148 (82.7)	48 (92.7)	1.25 (1.03-1.52)	0.023	1.26 (0.93-1.71)	0.131
	Structural valve deterioration	34 (8.2)	16 (8.3)	9 (9.3)	1.17 (0.64-2.12)	0.614	1.89 (0.90-3.96)	0.091
	Repeat aortic valve intervention	17 (3.8)	7 (11.3)	5 (3.8)	0.99 (0.41-2.41)	0.985	2.09 (0.77-5.70)	0.149
		Predicted PPM _{THV}						
		None (N=2,155)	Moderate (N=279)	Severe (N=29)	Moderate vs none		Severe vs none	
					Adjusted HR (95% CI)	<i>p</i> -value	Adjusted HR (95% CI)	<i>p</i> -value
At 1 year	All-cause death	237 (11.8)	15 (5.9)	2 (7.9)	0.53 (0.32-0.90)	0.019	0.57 (0.14-2.28)	0.422
	Cardiovascular death	149 (7.5)	10 (4.0)	2 (7.9)	0.58 (0.30-1.10)	0.094	0.92 (0.23-3.73)	0.910
	Structural valve deterioration	33 (1.7)	5 (2.0)	0	1.13 (0.44-2.91)	0.800	-	-
	Repeat aortic valve intervention	15 (0.7)	5 (1.9)	0	2.34 (0.85-6.46)	0.101	-	-
At 5 years	All-cause death	600 (49.5)	44 (38.8)	5 (33.0)	0.68 (0.50-0.92)	0.013	0.58 (0.24-1.41)	0.231
	Cardiovascular death	407 (38.0)	32 (30.6)	4 (24.6)	0.72 (0.50-1.03)	0.073	0.68 (0.25-1.81)	0.438
	Structural valve deterioration	48 (4.1)	6 (3.2)	0	1.00 (0.43-2.35)	0.994	-	-
	Repeat aortic valve intervention	19 (1.4)	7 (5.0)	0	2.77 (1.16-6.63)	0.022	-	-
At 10 years	All-cause death	702 (86.8)	56 (82.0)	6 (66.5)	0.73 (0.55-0.96)	0.022	0.54 (0.24-1.22)	0.139
	Cardiovascular death	494 (80.3)	41 (72.8)	5 (62.3)	0.74 (0.54-1.03)	0.071	0.62 (0.26-1.49)	0.284
	Structural valve deterioration	52 (8.5)	7 (9.6)	0	1.07 (0.48-2.36)	0.870	-	-
	Repeat aortic valve intervention	20 (3.6)	9 (20.6)	0	3.41 (1.55-7.52)	0.002	-	-

Data are event counts with Kaplan-Meier failure rates (%) counting only the first event of each type per patient. Patients were censored at last valid contact with events assessed and adjudicated. Adjusted hazard ratios and *p*-values after adjusting for age, gender and STS-PROM. CI: confidence interval; HR: hazard ratio; PPM: prosthesis-patient mismatch; PPM_{THV}: prosthesis-patient mismatch defined by the normal reference values of effective orifice area for each size and model of implanted transcatheter heart valve; STS-PROM: Society of Thoracic Surgeons Predicted Risk of Mortality; THV: transcatheter heart valve

Table 3. Clinical outcomes according to predicted PPM_{CT}

		Predicted PPM _{CT}										
		None (N=1,380)	Moderate (N=189)	Severe (N=1)	Moderate vs none				Severe vs none			
					Crude HR (95% CI)	p-value	Adjusted HR (95% CI)	p-value	Crude HR (95% CI)	p-value	Adjusted HR (95% CI)	p-value
At 1 year	All-cause death	141 (10.3)	13 (6.9)	0	0.66 (0.38-1.17)	0.155	0.66 (0.37-1.18)	0.164	-	-	-	-
	Cardiovascular death	84 (6.3)	9 (4.9)	0	0.77 (0.39-1.53)	0.455	0.79 (0.39-1.58)	0.500	-	-	-	-
	Structural valve deterioration	23 (1.8)	5 (2.7)	0	1.58 (0.60-4.15)	0.356	1.45 (0.54-3.86)	0.459	-	-	-	-
	Repeat aortic valve intervention	14 (1.0)	2 (1.1)	0	1.03 (0.23-4.53)	0.968	0.97 (0.22-4.36)	0.968	-	-	-	-
At 5 years	All-cause death	334 (44.8)	30 (48.6)	0	0.90 (0.62-1.31)	0.584	0.89 (0.61-1.29)	0.528	-	-	-	-
	Cardiovascular death	219 (33.3)	21 (38.2)	0	0.99 (0.63-1.55)	0.950	1.01 (0.64-1.59)	0.966	-	-	-	-
	Structural valve deterioration	27 (2.9)	7 (8.2)	0	2.08 (0.90-4.79)	0.086	1.91 (0.82-4.44)	0.134	-	-	-	-
	Repeat aortic valve intervention	15 (1.4)	2 (1.1)	0	0.99 (0.23-4.34)	0.991	0.97 (0.22-4.31)	0.963	-	-	-	-
At 10 years	All-cause death	380 (84.5)	30 (48.6)	0	0.90 (0.62-1.31)	0.584	0.90 (0.61-1.31)	0.571	-	-	-	-
	Cardiovascular death	259 (78.5)	21 (38.2)	0	0.99 (0.63-1.55)	0.950	1.02 (0.65-1.60)	0.945	-	-	-	-
	Structural valve deterioration	27 (2.9)	7 (8.2)	0	2.08 (0.90-4.79)	0.086	1.91 (0.82-4.44)	0.134	-	-	-	-
	Repeat aortic valve intervention	16 (5.8)	2 (1.1)	0	0.99 (0.23-4.34)	0.991	0.93 (0.21-4.17)	0.929	-	-	-	-

Data are event counts with Kaplan-Meier failure rates (%) counting only the first event of each type per patient. Patients were censored at the last valid contact with events assessed and adjudicated. Adjusted hazard ratios and p-values after adjusting for age, gender and STS-PROM. CI: confidence interval; HR: hazard ratio; PPM_{CT}: prosthesis-patient mismatch defined by the normal reference values of effective orifice area derived from preprocedural computed tomography; STS-PROM: Society of Thoracic Surgeons Predicted Risk of Mortality

Supplementary Table 6-Supplementary Table 8. During follow-up, 864 patients died. The median follow-up time for the overall population was 429 (interquartile range 363-1,724) days.

Table 2 and **Supplementary Table 6** show clinical outcomes according to measured PPM. All-cause death at 1, 5, and 10 years occurred in 10.5%, 52.8% and 84.3% of patients with no measured PPM, in 12.2%, 58.3%, and 89.7% in patients with moderate measured PPM, and in 11.8%, 51.5% and 94.6% of patients with severe measured PPM (**Central illustration**). There was no significant difference in all-cause mortality between groups. Cardiovascular mortality at 10 years was higher in patients with moderate measured PPM compared with those with no measured PPM (82.7% vs 77.2%; adjusted HR [HR_{adj}] 1.25, 95% CI: 1.03-1.52; p=0.023), while there was no significant difference in cardiovascular mortality between patients with severe and no measured PPM. Rates of structural valve deterioration and repeat aortic valve intervention at 10 years were comparable between groups (**Figure 1**). The rate of persisting heart failure symptoms (New York Heart Association [NYHA] Class III/IV) is shown in **Supplementary Table 7**.

Clinical outcomes at 1, 5, and 10 years according to predicted PPM_{THV} are summarised in **Table 2** and **Supplementary Table 6**. All-cause death at 1, 5 and 10 years occurred in 11.8%, 49.5% and 86.8% of patients with no predicted PPM_{THV}, in 5.9%, 38.8% and 82.0% of patients with moderate predicted PPM_{THV}, and in 7.9%, 33.0% and 66.5% of patients with severe predicted PPM_{THV} (**Central illustration**). Patients with moderate predicted PPM_{THV} had a lower risk of 10-year all-cause death (HR_{adj} 0.73, 95% CI: 0.55-0.96; p=0.022) compared to patients with no predicted PPM_{THV}. In contrast, mortality was comparable between patients with severe and no predicted PPM_{THV}. Moderate predicted PPM_{THV} was associated with an increased risk of repeat aortic valve intervention at 10 years (HR_{adj} 3.41, 95% CI: 1.55-7.52; p=0.002), while the rates of structural valve deterioration and persisting heart failure symptoms were comparable between groups (**Table 2, Supplementary Table 6, Supplementary Table 7, Figure 1**).

Table 3 shows the clinical outcomes according to predicted PPM_{CT}. There were no differences in all-cause or cardiovascular mortality between groups.

Table 4. Clinical outcomes according to the method of the definition of PPM competing risk analysis.

		Measured PPM						
		None	Moderate	Severe	Moderate vs none		Severe vs none	
		(N=1,584)	(N=664)	(N=215)	Adjusted sHR (95% CI)	p-value	Adjusted sHR (95% CI)	p-value
At 1 year	Cardiovascular death	94 (6.4)	51 (8.2)	16 (7.9)	1.33 (0.94-1.87)	0.103	1.28 (0.75-2.18)	0.364
	Structural valve deterioration	23 (1.6)	10 (1.6)	5 (2.5)	1.01 (0.48-2.14)	0.969	1.54 (0.58-4.07)	0.383
	Repeat aortic valve deterioration	11 (0.7)	5 (0.8)	4 (1.9)	1.07 (0.38-3.06)	0.897	2.52 (0.79-5.99)	0.148
At 5 years	Cardiovascular death	322 (33.5)	147 (38.0)	43 (34.2)	1.18 (0.97-1.44)	0.089	1.08 (0.78-1.49)	0.648
	Structural valve deterioration	35 (3.0)	17 (3.6)	9 (5.8)	1.16 (0.65-2.07)	0.626	1.80 (0.86-3.77)	0.119
	Repeat aortic valve deterioration	16 (1.3)	8 (1.6)	5 (3.1)	1.19 (0.51-2.78)	0.688	2.14 (0.76-5.99)	0.148
At 10 years	Cardiovascular death	402 (64.0)	174 (69.7)	55 (68.5)	1.18 (0.99-1.41)	0.068	1.18 (0.90-1.56)	0.232
	Structural valve deterioration	40 (4.7)	19 (5.4)	9 (7.9)	1.15 (0.66-1.98)	0.627	1.60 (0.77-3.32)	0.206
	Repeat aortic valve deterioration	19 (2.3)	9 (2.7)	5 (4.6)	1.12 (0.51-2.49)	0.772	1.83 (0.67-5.01)	0.241
		Predicted PPM _{THV}						
		None	Moderate	Severe	Moderate vs none		Severe vs none	
		(N=2,155)	(N=279)	(N=29)	Adjusted sHR (95% CI)	p-value	Adjusted HR (95% CI)	p-value
At 1 year	Cardiovascular death	149 (7.4)	10 (3.9)	2 (7.4)	0.58 (0.31-1.11)	0.099	0.96 (0.24-3.85)	0.956
	Structural valve deterioration	33 (1.6)	5 (2.0)	0	1.16 (0.44-3.03)	0.761	-	-
	Repeat aortic valve deterioration	15 (0.7)	5 (1.9)	0	2.37 (0.87-6.47)	0.091	-	-
At 5 years	Cardiovascular death	473 (35.7)	35 (25.9)	4 (24.6)	0.71 (0.50-1.00)	0.050	0.61 (0.22-1.68)	0.344
	Structural valve deterioration	54 (3.4)	7 (3.9)	0	1.11 (0.50-2.45)	0.799	-	-
	Repeat aortic valve deterioration	21 (1.3)	8 (4.1)	0	2.97 (1.31-6.76)	0.009	-	-
At 10 years	Cardiovascular death	581 (66.9)	45 (54.0)	5 (51.9)	0.72 (0.53-0.97)	0.030	0.62 (0.25-1.52)	0.294
	Structural valve deterioration	60 (5.1)	8 (6.1)	0	1.15 (0.55-2.39)	0.719	-	-
	Repeat aortic valve deterioration	23 (2.1)	10 (7.9)	0	3.51 (1.65-7.46)	0.001	-	-

For competing risks of death, or in case of cardiovascular death, of non-cardiovascular death, subdistributions of the hazard ratio (sHR) with 95% confidence intervals (95% CI) are reported. Adjusted hazard ratios and p-values after adjusting for age, gender and STS-PROM. PPM: prosthesis-patient mismatch; PPM_{THV}: prosthesis-patient mismatch defined by the normal reference values of effective orifice area for each size and model of implanted transcatheter heart valve; STS-PROM: Society of Thoracic Surgeons Predicted Risk of Mortality; THV: transcatheter heart valve

COMPETING RISK ANALYSIS

In the competing risk survival analysis for outcomes, moderate and severe measured PPM were not associated with an increased risk of cardiovascular death (moderate: sHR_{adj} 1.18, 95% CI: 0.99-1.41; p=0.068 and severe: sHR_{adj} 1.18, 95% CI: 0.90-1.56; p=0.232, respectively), structural valve deterioration (moderate: sHR_{adj} 1.15, 95% CI: 0.66-1.98; p=0.627 and severe: sHR_{adj} 1.60, 95% CI: 0.77-3.32; p=0.206, respectively), or repeat aortic valve intervention (moderate: sHR_{adj} 1.12, 95% CI: 0.51-2.49; p=0.772 and severe: sHR_{adj} 1.83, 95% CI: 0.67-5.01; p=0.241, respectively). The clinical impact of moderate predicted PPM_{THV} was consistent with the main analysis (Table 4, Supplementary Table 8, Figure 2).

Discussion

The main findings of the present study can be summarised as follows: 1) predicted EOAI results in lower estimates of PPM severity as compared to measured EOAI in patients after TAVR. 2) There was no consistent signal for an increased risk of death over the course of 10 years in patients with PPM, irrespective of the definition.

Recent studies have suggested that the use of measured EOA overestimates the frequency and severity of PPM compared to the use of predicted EOA. Consistent with these previous studies, we found higher frequencies of moderate and severe PPM using measured EOA compared to predicted EOA^{10,11}. The discrepancy in the frequency of PPM according to different definitions relates to inaccuracies in the assessment of EOA: 1) indexing of EOA to BSA may underestimate the EOAI and lead to an overestimation of the frequency and severity of PPM in obese patients¹⁰; 2) higher transvalvular gradients and smaller EOAs are documented by Doppler echocardiography compared to cardiac catheterisation due to the pressure recovery phenomenon²²; 3) the geometric assumption that the cross-sectional area of the left ventricular outflow tract is circular results in an underestimation of EOAI and overestimation of PPM when using 2-dimensional echocardiography as compared with CT^{23,24}; and 4) measured EOA is flow dependent, and a low-flow state may lead to underestimation of the EOA, resulting in pseudo-severe PPM¹¹. In addition, it has been suggested that predicted PPM has a stronger association with haemodynamic outcomes compared to measured PPM¹⁰. Nevertheless, rates of residual

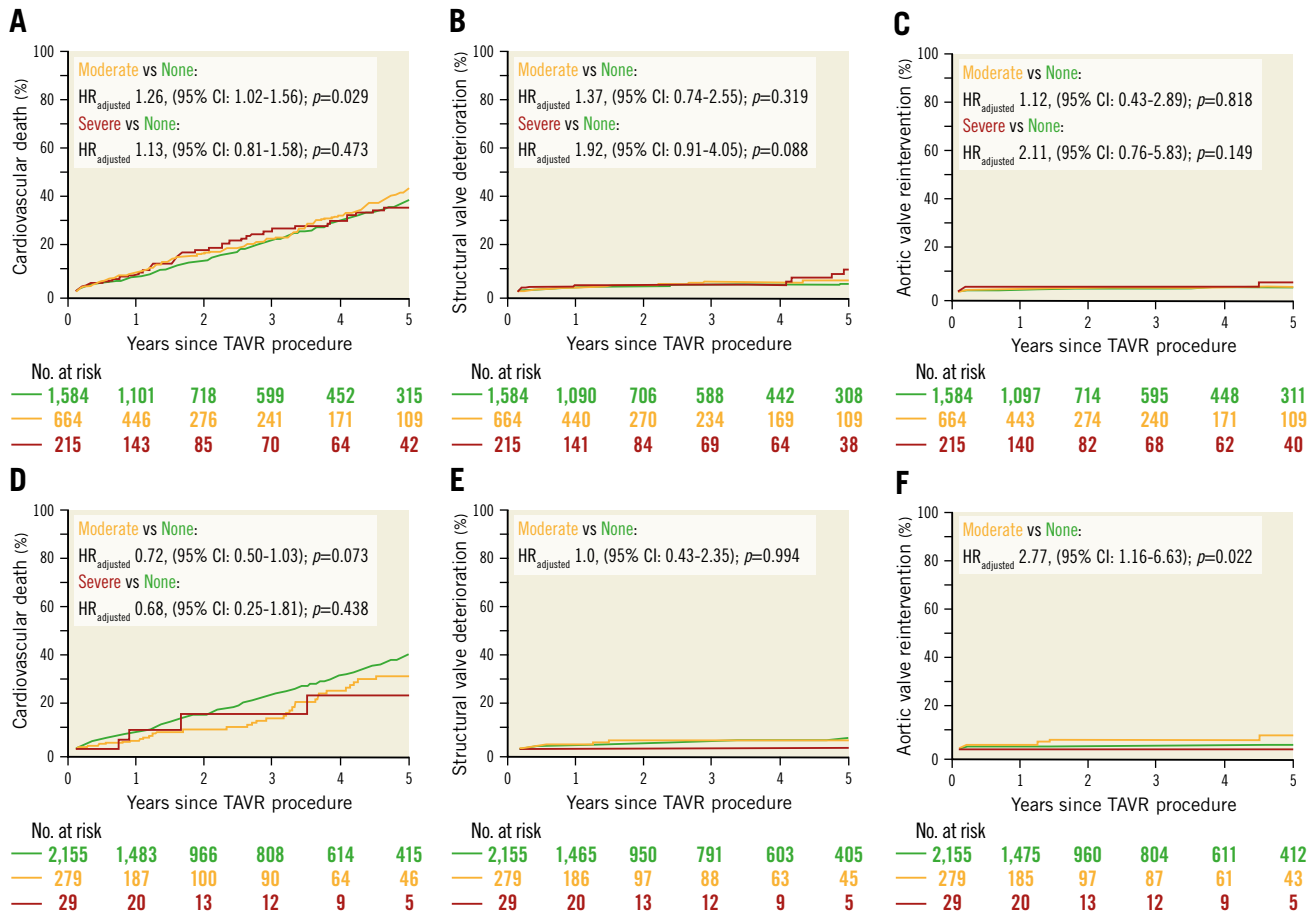


Figure 1. Cumulative event curves for clinical outcomes stratified by the method for the definition of PPM. A, B & C) Clinical outcomes according to measured PPM. D, E & F) Clinical outcomes according to predicted PPM_{THV}. Hazard ratios and p-values were calculated with the use of Cox proportional hazards models. CI: confidence interval; HR_{adjusted}: adjusted hazard ratio; PPM: prosthesis-patient mismatch; PPM_{THV}: PPM defined by the normal reference values of EOA for each size and model of implanted transcatheter heart valve; TAVR: transcatheter aortic valve replacement

gradients above 20 mmHg were relatively low in our analysis even in patients with PPM. Furthermore, overestimation of the frequency and severity of PPM may lead to a misinterpretation of the impact of PPM in TAVR populations. In the present study, we found substantial differences in mortality depending on the methods used to assess PPM (e.g., all-cause mortality at 5 years: 58.3% and 51.5% in moderate and severe measured PPM versus 38.8% and 33.0% in moderate and severe predicted PPM_{THV}). Using the predicted PPM definition could avoid overestimation of the mortality risk.

Several studies investigating the clinical impact of measured PPM in patients undergoing TAVR yielded conflicting results⁵⁻⁸. A recent meta-analysis of 81,969 TAVR patients concluded that patients with moderate/severe PPM as defined by measured EOA had a modestly increased risk of mortality compared with patients without PPM (HR 1.09, 95% CI: 1.04-1.14; p<0.001)²⁵. Of note, the estimation of cumulative incidence using the Kaplan-Meier method and predicted risk using Cox regression models, which are commonly used in TAVR studies, can lead to biased risk estimates which ignore competing risks, especially in elderly populations with

multiple comorbidities^{26,27}. Indeed, in the present analysis, cardiovascular death occurred more frequently in patients with moderate measured PPM compared to those without PPM, whereas the effect was no longer significant under competing risk of non-cardiovascular death. Investigators should consider the presence of competing risks when conducting time-to-event analyses, especially in comorbid populations with long-term follow-up.

Interestingly, patients with moderate predicted PPM_{THV} and PPM_{CT} had a lower 10-year mortality compared to those with no PPM in the present study. Similar trends have been observed in previous studies. In the analysis from the PARTNER 2 trial and registry, moderate predicted PPM_{THV} and PPM_{CT} had a trend towards lower mortality up to 5 years after TAVR as compared to those without PPM (36.9% vs 41.4% and 38.7% vs 41.4%, respectively)¹¹. Previous studies were unable to evaluate the impact of severe predicted PPM on clinical outcomes because of the modest numbers of patients with severe predicted PPM^{10,11}. In line with previous studies, severe predicted PPM_{THV} was extremely rare in the present analysis. Our findings suggest that predicted PPM

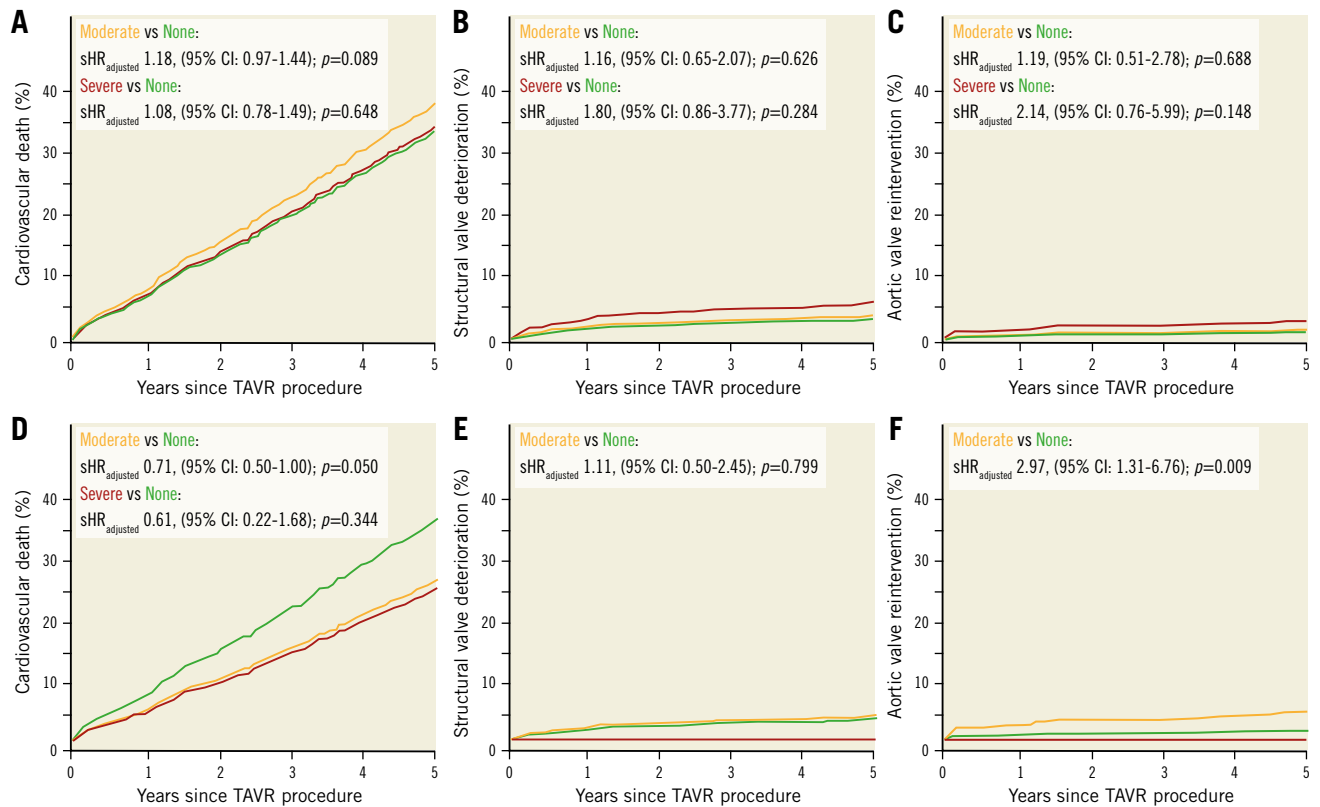


Figure 2. Cumulative event curves for clinical outcomes stratified by the method for definition of PPM in a competing analysis. A, B & C) Clinical outcomes according to measured PPM. D, E & F) Clinical outcomes according to predicted PPM_{THV}. For competing risks of death, or in case of cardiovascular death, of non-cardiovascular death, subdistributions of the hazard ratio (sHR) with 95% confidence intervals (95% CI) are reported. HR_{adjusted}: adjusted hazard ratio; PPM: prosthesis-patient mismatch; PPM_{THV}: PPM defined by the normal reference values of EOA for each size and model of implanted transcatheter heart valve; TAVR: transcatheter aortic valve replacement

may not adversely impact prognosis, irrespective of severity, in a TAVR population. In contrast, in the present analysis, repeat aortic valve interventions were more frequently performed in patients with moderate predicted PPM_{THV} than in those with no PPM. The high residual gradients may lead to impaired forward haemodynamics, accelerated bioprosthesis degeneration and the need for reintervention. Further studies are needed to investigate the impact of high residual gradients and PPM after TAVR on repeat aortic valve interventions and to determine whether performing a reintervention reduces the risk of adverse outcomes in this setting¹.

There is a growing demand to establish a standardised assessment method for PPM in patients undergoing TAVR. The two methods of predicted EOA are arguably more robust parameters to determine the true frequency of PPM in TAVR populations but require critical assessment. First, predicted EOA ignores differences in actual EOAs resulting from a flexible range of device expansion. Our group previously reported that, particularly in patients with considerable device landing zone calcification and annulus ellipticity, suboptimal THV-sizing is not uncommon²⁸. The use of a uniform cut-off value of predicted EOA_{THV} may under- or overestimate the severity of PPM in patients with complex aortic root anatomies. Second, predicted EOA_{CT} is based on preprocedural CT. Fukui et

al reported that the post-TAVR left ventricular outflow tract area is significantly larger than the pre-TAVR native aortic annulus and that PPM defined by post-TAVR CT was associated with an increased risk of all-cause mortality²⁴. A tailored approach including both post-TAVR CT and echocardiography may be key to the management of patients with suspected PPM. Finally, the predicted EOA does not take into account flow variability. Abbas et al evaluated the impact of low-flow status on clinical outcomes in patients with and without severe measured PPM and showed that severe measured PPM with low-flow status was associated with cardiac death after TAVR regardless of the implanted valve size or post-TAVR transvalvular gradient²⁹. More recently, the PARTNER trials have proposed new reference values of predicted EOAs for each size and generation of balloon-expandable valves according to the flow status (low or normal flow)³⁰.

Limitations

The results of the present study should be interpreted in light of several limitations. First, more than 15% of patients were excluded because of inadequate data for PPM assessment, which may have introduced a degree of selection bias. However, we provide comprehensive data on more than 2,400 patients who were assessed for

PPM severity using 3 methods from a large prospective registry that adheres to high standards of data quality, with rigorous data collection, standardised follow-up and independent adjudication of events. Second, since this was a retrospective analysis based on prospectively collected data, the possibility of residual confounding cannot be excluded despite rigorous statistical techniques. Third, although the present study is the largest and longest to investigate the clinical impact of predicted PPM, the low prevalence of severe predicted PPM and the relatively short median follow-up time warrant cautious interpretation of the results. Fourth, although the occurrence of structural valve deterioration was systematically recorded and adjudicated, the definitions of structural valve deterioration were not in accordance with the current VARC criteria, which may have led to under- or overreporting of structural valve deterioration in the cohort. Finally, the present cohort predominantly included octogenarians, and the results may not be generalisable to younger patients with fewer comorbidities and longer life expectancy.

Conclusions

The use of predicted, as compared to measured, EOAi downgrades the severity of PPM in patients after TAVR. In a competing risk analysis, we found no increased risk of death in patients with PPM over a median follow-up time of 429 days, regardless of the EOA definition. Further study is needed to evaluate the impact of PPM on long-term clinical outcomes after TAVR in younger patients.

Impact on daily practice

Unlike SAVR studies, most TAVR studies have evaluated PPM using measured EOA and may overestimate the frequency and severity of PPM. PPM was not associated with an increased risk of 10-year mortality in TAVR under competing risk of death or, in cardiovascular death, under competing risk of non-cardiovascular death by any method of measurement. The impact of PPM on long-term clinical outcomes should be investigated in younger populations.

Conflict of interest statement

S. Windecker reports research, travel or educational grants to the institution without personal remuneration from Abbott, Abiomed, Amgen, AstraZeneca, Bayer, Braun, Biotronik, Boehringer Ingelheim, Boston Scientific, Bristol-Myers Squibb, Cardinal Health, CardioValve, Cordis Medical, Corflow Therapeutics, CSL Behring, Daiichi Sankyo, Edwards Lifesciences, Farapulse Inc., Fumedica, Guerbet, Idorsia, Inari Medical, InfraRedx, Janssen-Cilag, Johnson & Johnson, MedAlliance, Medicure, Medtronic, Merck Sharp & Dohme, Miracor Medical, Novartis, Novo Nordisk, Organon, OrPha Suisse, Pharming Tech, Pfizer, Polares Medical, Regeneron, Sanofi-Aventis, Servier, SINOMED, Terumo, Vifor, and V-Wave. He served as an advisory board member and/or a member of the steering/executive group for trials funded by Abbott, Abiomed, Amgen, AstraZeneca, Bayer, Boston Scientific, Biotronik, Bristol-Myers Squibb, Edwards Lifesciences, MedAlliance, Medtronic, Novartis, Polares Medical, Recardio, SINOMED, Terumo, and V-Wave, with payments to the

institution but no personal payments. He is also a member of the steering/executive committee group of several investigator-initiated trials that receive funding from industry without impact on his personal remuneration. T. Pilgrim reports research grants to the institution from Edwards Lifesciences, Boston Scientific, and Biotronik; and personal fees from Biotronik, Boston Scientific, Medtronic, Abbott, and HighLife SAS. D. Reineke reports travel expenses from Abbott, Edwards Lifesciences, and Medtronic. S. Stortecky reports research grants to the institution from Edwards Lifesciences, Medtronic, Boston Scientific, and Abbott; and personal fees from Boston Scientific, Teleflex, and BTG. F. Praz reports travel expenses from Abbott, Edwards Lifesciences, and Polares Medical. J. Lanz reports speaker fees to the institution from Edwards Lifesciences and Abbott; and served as advisory board member for Abbott. T. Okuno reports speaker fees from Abbott. D. Heg has no personal conflicts; his employer, CTU Bern, University of Bern, has a staff policy of not accepting honoraria or consultancy fees. However, CTU Bern is involved in the design, conduct, or analysis of clinical studies funded by not-for-profit and for-profit organisations. In particular, pharmaceutical and medical device companies provide direct funding to some of these studies. For an up-to-date list of CTU Bern's conflicts of interest see http://www.ctu.unibe.ch/research/declaration_of_interest/index_eng.html. The other authors have no conflicts of interest to declare.

References

1. Flameng W, Herregods MC, Vercauteren M, Herijgers P, Bogaerts K, Meuris B. Prosthesis-patient mismatch predicts structural valve degeneration in bioprosthetic heart valves. *Circulation*. 2010;121:2123-9.
2. Head SJ, Mokhles MM, Osnabrugge RL, Pibarot P, Mack MJ, Takkenberg JJ, Bogers AJ, Kappetein AP. The impact of prosthesis-patient mismatch on long-term survival after aortic valve replacement: a systematic review and meta-analysis of 34 observational studies comprising 27 186 patients with 133 141 patient-years. *Eur Heart J*. 2012;33:1518-29.
3. Fallon JM, DeSimone JP, Brennan JM, O'Brien S, Thibault DP, DiScipio AW, Pibarot P, Jacobs JP, Malenka DJ. The Incidence and Consequence of Prosthesis-Patient Mismatch After Surgical Aortic Valve Replacement. *Ann Thorac Surg*. 2018; 106:14-22.
4. Ternacle J, Abbas AE, Pibarot P. Prosthesis-Patient Mismatch After Transcatheter Aortic Valve Replacement: Has It Become Obsolete? *JACC Cardiovasc Interv*. 2021;14:977-80.
5. Pibarot P, Weissman NJ, Stewart WJ, Hahn RT, Lindman BR, McAndrew T, Kodali SK, Mack MJ, Thourani VH, Miller DC, Svensson LG, Herrmann HC, Smith CR, Rodés-Cabau J, Webb J, Lim S, Xu K, Hueter I, Douglas PS, Leon MB. Incidence and sequelae of prosthesis-patient mismatch in transcatheter versus surgical valve replacement in high-risk patients with severe aortic stenosis: a PARTNER trial cohort--a analysis. *J Am Coll Cardiol*. 2014;64:1323-34.
6. Herrmann HC, Daneshvar SA, Fonarow GC, Stebbins A, Vemulapalli S, Desai ND, Malenka DJ, Thourani VH, Rymer J, Kosinski AS. Prosthesis-Patient Mismatch in Patients Undergoing Transcatheter Aortic Valve Replacement: From the STS/ACC TVT Registry. *J Am Coll Cardiol*. 2018;72:2701-11.
7. Okuno T, Pilgrim T, Heg D, Stortecky S, Praz F, Windecker S, Lanz J. Prosthesis-Patient Mismatch Based on Energy Loss Index After Transcatheter Aortic Valve Replacement. *JACC Cardiovasc Interv*. 2020;13:2584-6.
8. Tang GHL, Sengupta A, Alexis SL, Bapat VN, Adams DH, Sharma SK, Kini AS, Kodali SK, Ramlawi B, Gada H, Vora AN, Forrest JK, Kaple RK, Liu F, Reardon MJ. Outcomes of Prosthesis-Patient Mismatch Following Supra-Annular Transcatheter Aortic Valve Replacement: From the STS/ACC TVT Registry. *JACC Cardiovasc Interv*. 2021;14:964-76.
9. Hahn RT, Leipsic J, Douglas PS, Jaber WA, Weissman NJ, Pibarot P, Blanke P, Oh JK. Comprehensive Echocardiographic Assessment of Normal Transcatheter Valve Function. *JACC Cardiovasc Imaging*. 2019;12:25-34.
10. Ternacle J, Guimaraes L, Vincent F, Côté N, Côté M, Lachance D, Clavel MA, Abbas AE, Pibarot P, Rodés-Cabau J. Reclassification of prosthesis-patient mismatch

after transcatheter aortic valve replacement using predicted vs. measured indexed effective orifice area. *Eur Heart J Cardiovasc Imaging*. 2021;22:11-20.

11. Ternacle J, Pibarot P, Herrmann HC, Kodali S, Leipsic J, Blanke P, Jaber W, Mack MJ, Clavel MA, Salaun E, Guzzetti E, Annabi MS, Bernier M, Beaudoin J, Khalique OK, Weissman NJ, Douglas P, Bax J, Dahou A, Xu K, Alu M, Rogers E, Leon M, Thourani VH, Abbas AE, Hahn RT. Prosthesis-Patient Mismatch After Aortic Valve Replacement in the PARTNER 2 Trial and Registry. *JACC Cardiovasc Interv*. 2021;14:1466-77.

12. Stortecky S, Franzone A, Heg D, Tueller D, Noble S, Pilgrim T, Jeger R, Toggweiler S, Ferrari E, Nieltispach F, Taramasso M, Maisano F, Grünenfelder J, Muller O, Huber C, Roffi M, Carrel T, Wenaweser P, Windecker S. Temporal trends in adoption and outcomes of transcatheter aortic valve implantation: a Swiss TAVI Registry analysis. *Eur Heart J Qual Care Clin Outcomes*. 2019;5:242-51.

13. VARC-3 WRITING COMMITTEE: Généreux P, Piazza N, Alu MC, Nazif T, Hahn RT, Pibarot P, Bax JJ, Leipsic JA, Blanke P, Blackstone EH, Finn MT, Kapadia S, Linke A, Mack MJ, Makkar R, Mehran R, Popma JJ, Reardon M, Rodes-Cabau J, Van Mieghem NM, Webb JG, Cohen DJ, Leon MB. Valve Academic Research Consortium 3: Updated Endpoint Definitions for Aortic Valve Clinical Research. *J Am Coll Cardiol*. 2021;77:2717-46.

14. Zoghbi WA, Chambers JB, Dumesnil JG, Foster E, Gottdiener JS, Grayburn PA, Khandheria BK, Levine RA, Marx GR, Miller FA Jr, Nakatani S, Quiñones MA, Rakowski H, Rodriguez LL, Swaminathan M, Waggoner AD, Weissman NJ, Zabalgoitia M; American Society of Echocardiography's Guidelines and Standards Committee; Task Force on Prosthetic Valves; American College of Cardiology Cardiovascular Imaging Committee; Cardiac Imaging Committee of the American Heart Association; European Association of Echocardiography; European Society of Cardiology; Japanese Society of Echocardiography; Canadian Society of Echocardiography; American College of Cardiology Foundation; American Heart Association; European Association of Echocardiography; European Society of Cardiology; Japanese Society of Echocardiography; Canadian Society of Echocardiography. Recommendations for evaluation of prosthetic valves with echocardiography and doppler ultrasound: a report from the American Society of Echocardiography's Guidelines and Standards Committee and the Task Force on Prosthetic Valves, developed in conjunction with the American College of Cardiology Cardiovascular Imaging Committee, Cardiac Imaging Committee of the American Heart Association, the European Association of Echocardiography, a registered branch of the European Society of Cardiology, the Japanese Society of Echocardiography and the Canadian Society of Echocardiography, endorsed by the American College of Cardiology Foundation, American Heart Association, European Association of Echocardiography, a registered branch of the European Society of Cardiology, the Japanese Society of Echocardiography, and Canadian Society of Echocardiography. *J Am Soc Echocardiogr*. 2009;22:975-1014; quiz 1082-4.

15. Lancellotti P, Pibarot P, Chambers J, Edvardsen T, Delgado V, Dulgheru R, Pepi M, Cosyns B, Dweck MR, Garbi M, Magne J, Nieman K, Rosenhek R, Bernard A, Lowenstein J, Vieira ML, Rabischoffsky A, Vyhmeister RH, Zhou X, Zhang Y, Zamorano JL, Habib G. Recommendations for the imaging assessment of prosthetic heart valves: a report from the European Association of Cardiovascular Imaging endorsed by the Chinese Society of Echocardiography, the Inter-American Society of Echocardiography, and the Brazilian Department of Cardiovascular Imaging. *Eur Heart J Cardiovasc Imaging*. 2016;17:589-90.

16. Okuno T, Brugger N, Asami M, Heg D, Siontis GCM, Winkel MG, Lanz J, Gräni C, Huber A, Stortecky S, George I, Kodali S, Pilgrim T, Windecker S, Khalique OK, Praz F. Clinical impact of mitral calcium volume in patients undergoing transcatheter aortic valve implantation. *J Cardiovasc Comput Tomogr*. 2021;15:356-65.

17. Okuno T, Demirel C, Tomii D, Heg D, Häner J, Siontis GCM, Lanz J, Räber L, Strotecky S, Fürholz M, Praz F, Windecker S, Pilgrim T. Long-term risk of unplanned percutaneous coronary intervention after transcatheter aortic valve replacement. *EuroIntervention*. 2022;18:797-803.

18. Leon MB, Piazza N, Nikolsky E, Blackstone EH, Cutlip DE, Kappetein AP, Krucoff MW, Mack M, Mehran R, Miller C, Morel MA, Petersen J, Popma JJ, Takkenberg JJ, Vahanian A, van Es GA, Vranckx P, Webb JG, Windecker S, Serruys PW. Standardized endpoint definitions for Transcatheter Aortic Valve Implantation clinical trials: a consensus report from the Valve Academic Research Consortium. *J Am Coll Cardiol*. 2011;57:253-69.

19. Kappetein AP, Head SJ, Généreux P, Piazza N, van Mieghem NM, Blackstone EH, Brott TG, Cohen DJ, Cutlip DE, van Es GA, Hahn RT, Kirtane AJ, Krucoff MW, Kodali S, Mack MJ, Mehran R, Rodes-Cabau J, Vranckx P, Webb JG, Windecker S, Serruys PW, Leon MB. Updated standardized endpoint definitions for transcatheter aortic valve implantation: the Valve Academic Research Consortium-2 consensus document. *J Am Coll Cardiol*. 2012;60:1438-54.

20. Gray RJ. A Class of K-Sample Tests for Comparing the Cumulative Incidence of a Competing Risk. *The Annals of Statistics*. 1988;16:1141-54.

21. Pepe MS, Mori M. Kaplan-Meier, marginal or conditional probability curves in summarizing competing risks failure time data? *Stat Med*. 1993;12:737-51.

22. Abbas AE, Mando R, Kadri A, Khalili H, Hanzel G, Shannon F, Al-Azizi K, Waggoner T, Kassas S, Pilgrim T, Okuno T, Camacho A, Selberg A, Elmariyah S, Bavy A, Ternacle J, Christensen J, Gheewala N, Pibarot P, Mack M. Comparison of Transvalvular Aortic Mean Gradients Obtained by Intraprocedural Echocardiography and Invasive Measurement in Balloon and Self-Expanding Transcatheter Valves. *J Am Heart Assoc*. 2021;10:e021014.

23. Mooney J, Sellers SL, Blanke P, Pibarot P, Hahn RT, Dvir D, Douglas PS, Weissman NJ, Kodali SK, Thourani VH, Jilalawi H, Khalique O, Smith CR, Kueh SH, Ohana M, Grover R, Naoum C, Crowley A, Jaber WA, Alu MC, Parvataneni R, Mack M, Webb JG, Leon MB, Leipsic JA. CT-Defined Prosthesis-Patient Mismatch Downgrades Frequency and Severity, and Demonstrates No Association With Adverse Outcomes After Transcatheter Aortic Valve Replacement. *JACC Cardiovasc Interv*. 2017;10:1578-87.

24. Fukui M, Garcia S, Lesser JR, Gössl M, Tang L, Caye D, Newell M, Hashimoto G, Lopes BBC, Stanberry LI, Enriquez-Sarano M, Pibarot P, Hahn R, Sorajja P, Cavalcante JL. Prosthesis-patient mismatch defined by cardiac computed tomography versus echocardiography after transcatheter aortic valve replacement. *J Cardiovasc Comput Tomogr*. 2021;15:403-11.

25. Sá MP, Jacquemyn X, Van den Eynde J, Tasoudis P, Dokollari A, Torregrossa G, Sicouri S, Clavel MA, Pibarot P, Ramlawi B. Impact of Prosthesis-Patient Mismatch After Transcatheter Aortic Valve Replacement: Meta-Analysis of Kaplan-Meier-Derived Individual Patient Data. *JACC Cardiovasc Imaging*. 2023;16:298-310.

26. Holmes DR Jr, Brennan JM, Rumsfeld JS, Dai D, O'Brien SM, Vemulapalli S, Edwards FH, Carroll J, Shahian D, Grover F, Tuzcu EM, Peterson ED, Brindis RG, Mack MJ; STS/ACC TVT Registry. Clinical outcomes at 1 year following transcatheter aortic valve replacement. *JAMA*. 2015;313:1019-28.

27. Austin PC, Lee DS, Fine JP. Introduction to the Analysis of Survival Data in the Presence of Competing Risks. *Circulation*. 2016;133:601-9.

28. Okuno T, Heg D, Lanz J, Praz F, Gräni C, Langhammer B, Reineke D, Räber L, Wenaweser P, Pilgrim T, Windecker S, Stortecky S. Heart valve sizing and clinical outcomes in patients undergoing transcatheter aortic valve implantation. *Catheter Cardiovasc Interv*. 2021;98:E768-79.

29. Abbas AE, Ternacle J, Pibarot P, Xu K, Alu M, Rogers E, Hahn RT, Leon M, Thourani VH. Impact of Flow on Prosthesis-Patient Mismatch Following Transcatheter and Surgical Aortic Valve Replacement. *Circ Cardiovasc Imaging*. 2021;14:e012364.

30. Akinmolayemi O, Ozdemir D, Pibarot P, Zhao Y, Leipsic J, Douglas PS, Jaber WA, Weissman NJ, Blanke P, Hahn RT. Clinical and Echocardiographic Characteristics of Flow-Based Classification Following Balloon-Expandable Transcatheter Heart Valve in PARTNER Trials. *JACC Cardiovasc Imaging*. 2023;16:1-9.

Supplementary data

Supplementary Table 1. Predicted EOA based on transcatheter heart valve type and size.

Supplementary Table 2. Predicted EOA based on aortic annulus dimensions by preprocedural computed tomography.

Supplementary Table 3. Frequency of PPM according to device type.

Supplementary Table 4. Baseline and procedural characteristics according to measured and predicted PPM.

Supplementary Table 5. Post-TAVR valve haemodynamics.

Supplementary Table 6. Crude hazard ratios for clinical outcomes according to the method for the definition of PPM.

Supplementary Table 7. Residual heart failure symptoms according to the method for the definition of PPM.

Supplementary Table 8. Crude hazard ratios for clinical outcomes according to the method for the definition of PPM in a competing risk analysis.

Supplementary Figure 1. Study flowchart.

The supplementary data are published online at:
<https://eurointervention.pconline.com/doi/10.4244/EIJ-D-23-00456>



Supplementary data

Supplementary Table 1. Predicted EOA based on transcatheter heart valve type and size.

Predicted EOA according to Hahn et al. (9)	
SAPIEN XT	
23 mm	1.41 cm ²
26 mm	1.74 cm ²
29 mm	2.06 cm ²
SAPIEN 3 / 3 Ultra	
20 mm	1.22 cm ²
23 mm	1.45 cm ²
26 mm	1.74 cm ²
29 mm	1.89 cm ²
CoreValve	
23 mm	1.12 cm ²
26 mm	1.74 cm ²
29 mm	1.97 cm ²
31 mm	2.15 cm ²
Evolut R/PRO/PRO Plus	
23 mm	1.09 cm ²
26 mm	1.69 cm ²
29 mm	1.97 cm ²
34 mm	2.6 cm ²

EOA: effective orifice area.

Supplementary Table 2. Predicted EOA based on aortic annulus dimensions by preprocedural computed tomography.

	Predicted EOA according to Hahn et al. (9)
SAPIEN 3 / 3 Ultra	
Annulus area	
248 to 384 mm ²	1.41 cm ²
385 to 439 mm ²	1.58 cm ²
440 to 488 mm ²	1.73 cm ²
489 to 537 mm ²	1.79 cm ²
538 to 678 mm ²	1.91 cm ²
CoreValve	
Perimeter derived aortic annulus diameter	
≤22.8 mm	1.71 cm ²
>22.8 to 24.5 mm	1.80 cm ²
>24.5 to 25.9 mm	1.92 cm ²
>25.9 to 27.6 mm	1.94 cm ²
>27.6 to 41.5 mm	2.06 cm ²
Evolut R/PRO/PRO Plus	
Perimeter derived aortic annulus diameter	
≤22.3 mm	1.66 cm ²
>22.3 to 23.2 mm	1.82 cm ²
>23.2 to 24.7 mm	1.98 cm ²
>24.7 to 26.2 mm	1.98 cm ²
>26.2 to 30.2 mm	2.56 cm ²

EOA: effective orifice area.

Supplementary Table 3. Frequency of PPM according to device type.

	All patients (N = 2,463)	Balloon-expandable valve (N = 1,551)	Self-expanding valve (N = 912)	P value
Measured PPM				
Measured EOAI (cm ² /m ²)	0.95 ± 0.29	0.92 ± 0.28	1.0 ± 0.31	<0.001
Moderate or severe measured PPM, n (%)	879 (35.7%)	619 (39.9%)	260 (28.5%)	<0.001
Moderate measured PPM, n (%)	664 (27.0%)	475 (30.6%)	189 (20.7%)	<0.001
Severe measured PPM, n (%)	215 (8.7%)	144 (9.3%)	71 (7.8%)	0.210
Predicted PPM_{THV}				
Predicted EOAI _{THV} (cm ² /m ²)	0.96 ± 0.15	0.92 ± 0.12	1.03 ± 0.18	<0.001
Moderate or severe predicted PPM _{THV} , n (%)	308 (12.5%)	232 (15.0%)	76 (8.3%)	<0.001
Moderate predicted PPM _{THV} , n (%)	279 (11.3%)	232 (15.0%)	47 (5.2%)	<0.001
Severe predicted PPM _{THV} , n (%)	29 (1.2%)	0	29 (3.2%)	<0.001
Predicted PPM_{CT}				
Predicted EOAI _{CT} (cm ² /m ²)	0.97 ± 0.15	0.90 ± 0.12	1.05 ± 0.15	<0.001
Moderate or severe predicted PPM _{CT} , n (%)	190 (12.1%)	171 (19.2%)	19 (2.8%)	<0.001
Moderate predicted PPM _{CT} , n (%)	189 (12.0%)	170 (19.1%)	19 (2.8%)	<0.001

Severe predicted PPM _{CT} , n (%)	1 (0.1%)	1 (0.1%)	0	1.00
--	----------	----------	---	------

Values are mean \pm SD or n (%).

EOAi = effective orifice area index body surface area; PPM = prosthesis-patient mismatch; PPM_{CT} = PPM defined by predicted EOA derived from pre-procedural computed tomography; PPM_{THV} = PPM defined by predicted EOA for each size and model of implanted transcatheter heart valve.

Hypertension, n (%)	216 4 (87.9%)	1384 (87.4%)	588 (88.6%)	192 (89.3%)	0.58 6	1880 (87.2%)	258 (92.5%)	26 (89.7%)	0.04 0
Diabetes mellitus, n (%)	672 (27.3%)	415 (26.2%)	198 (29.8%)	59 (27.4%)	0.21 3	579 (26.9%)	87 (31.2%)	6 (20.7%)	0.22 7
Renal failure (eGFR <60 mL/min/1.73 m ²), n (%)	159 9 (64.9%)	1032 (65.2%)	435 (65.5%)	132 (61.4%)	0.51 5	1425 (66.2%)	151 (54.1%)	23 (79.3%)	<0.0 01
Coronary artery disease, n (%)	139 3 (56.6%)	881 (55.6%)	381 (57.4%)	131 (60.9%)	0.29 8	1210 (56.1%)	164 (58.8%)	19 (65.5%)	0.43 7
Previous history									
Atrial fibrillation, n (%)	806 (32.7%)	480 (30.3%)	251 (37.8%)	75 (34.9%)	0.00 2	714 (33.1%)	83 (29.7%)	9 (31.0%)	0.51 6
Peripheral artery disease, n (%)	309 (12.5%)	198 (12.5%)	76 (11.4%)	35 (16.3%)	0.17 7	274 (12.7%)	31 (11.1%)	4 (13.8%)	0.73 3
Echocardiography									
Indexed aortic valve area, cm ² /m ²	0.28 ± 0.44	0.29 ± 0.54	0.27 ± 0.10	0.26 ± 0.08	0.36 6	0.27 ± 0.09	0.35 ± 1.29	0.28 ± 0.09	0.03 1
Mean aortic valve gradient, mmHg	40.1 ± 16.6	40.2 ± 16.9	40.1 ± 16.6	39.1 ± 15.1	0.65 4	40.1 ± 16.8	40.0 ± 16.0	39.9 ± 15.6	0.99 1
LVEF, %	55.0 ± 13.7	55.9 ± 13.4	53.7 ± 14.0	52.0 ± 14.3	<0.0 01	54.6 ± 13.8	57.3 ± 12.5	56.5 ± 10.8	0.01 1
Aortic regurgitation moderate or severe, n (%)	251 (10.2%)	153 (9.7%)	74 (11.2%)	24 (11.2%)	0.49 8	218 (10.1%)	27 (9.7%)	6 (20.7%)	0.16 7
Mitral regurgitation moderate or severe, n (%)	429 (20.1%)	253 (18.3%)	127 (21.9%)	49 (27.2%)	0.00 8	384 (20.3%)	37 (16.4%)	8 (32.0%)	0.12 6

Tricuspid regurgitation moderate or severe, n (%)	237 (12.2%)	139 (11.2%)	74 (14.1%)	24 (14.0%)	0.176	207 (12.1%)	24 (12.0%)	6 (25.0%)	0.158
Procedural characteristics and outcomes									
General anesthesia, n (%)	422 (17.1%)	271 (17.1%)	114 (17.2%)	37 (17.2%)	0.999	366 (17.0%)	50 (17.9%)	6 (20.7%)	0.813
Femoral main access site, n (%)	2306 (93.6%)	1479 (93.4%)	626 (94.3%)	201 (93.5%)	0.722	2020 (93.7%)	259 (92.8%)	27 (93.1%)	0.839
Valve type, n (%)					<0.001				<0.001
Balloon-expandable	1551 (63.0%)	932 (58.8%)	475 (71.5%)	144 (67.0%)	<0.001	1319 (61.2%)	232 (83.2%)	0	<0.001
Self-expanding	912 (37.0%)	652 (41.2%)	189 (28.5%)	71 (33.0%)	<0.001	836 (38.8%)	47 (16.8%)	29 (100.0%)	<0.001
Device generation, n (%)					<0.001				<0.001
Early-generation devices	604 (24.5%)	429 (27.1%)	127 (19.1%)	48 (22.3%)	<0.001	558 (25.9%)	41 (14.7%)	5 (17.2%)	<0.001
Newer-generation devices	1859 (75.5%)	1155 (72.9%)	537 (80.9%)	167 (77.7%)	<0.001	1597 (74.1%)	238 (85.3%)	24 (82.8%)	<0.001
Valve size, mm	26.6 ± 2.3	26.8 ± 2.2	26.3 ± 2.4	25.9 ± 2.6	<0.001	27.0 ± 2.1	23.9 ± 1.6	23.0 ± 0.0	<0.001
Valve size ≤23 mm, n (%)	424 (17.2%)	200 (12.6%)	153 (23.0%)	71 (33.0%)	<0.001	194 (9.0%)	201 (72.0%)	29 (100%)	<0.001
Values are mean ± SD or n (%). Early-generation devices includes Medtronic CoreValve and SAPIEN XT. Newer-generation includes SAPIEN 3/SAPIEN 3 Ultra and Evolut R/PRO/PRO Plus.									

eGFR = estimated glomerular filtration rate; LVEF = left ventricular ejection fraction; NYHA = New York Heart Association; STS-PROM = society of thoracic surgeons predicted risk of mortality; TAVR = transcatheter aortic valve replacement. Other abbreviations as in Table 1.

Supplementary Table 5. Post-TAVR valve haemodynamics.

	Measured PPM				Predicted PPM _{THV}			
	None (N = 1,584)	Moderate (N = 664)	Severe (N = 215)	P valu e	None (N = 2,155)	Moderate (N = 279)	Severe (N = 29)	P valu e
Prosthetic mean gradient, mmHg	9.1 ± 4.0	11.5 ± 4.4	13.4 ± 6.4	<0.0 01	9.7 ± 4.3	13.4 ± 5.4	13.6 ± 6.7	<0.0 01
High residual gradient (mean gradient ≥20 mmHg), n (%)	17 (1.1%)	34 (5.2%)	31 (14.6%)	<0.0 01	46 (2.1%)	33 (12.0%)	3 (10.3%)	<0.0 01
Measured EOAI, cm ² /m ²	1.09 ± 0.26	0.74 ± 0.07	0.54 ± 0.09	<0.0 01	0.96 ± 0.29	0.82 ± 0.29	0.75 ± 0.19	<0.0 01
Moderate or severe aortic regurgitation, n (%)	64 (4.1%)	24 (3.6%)	9 (4.2%)	0.87 5	90 (4.2%)	7 (2.6%)	0	0.23 6
Left ventricular ejection fraction, (%)	57.1 ± 12.9	54.1 ± 13.5	52.4 ± 15.8	<0.0 01	55.7 ± 13.4	57.2 ± 14.1	56.6 ± 9.2	0.38 0
Left ventricular ejection fraction <50%, n (%)	186 (21.7%)	113 (30.7%)	39 (33.1%)	<0.0 01	303 (26.0%)	30 (18.5%)	5 (27.8%)	0.11 6
Stroke volume index, mL/m ²	40.0 ± 11.7	32.3 ± 8.3	29.8 ± 10.8	<0.0 01	36.9 ± 11.5	37.7 ± 12.0	35.2 ± 9.0	0.38 2
Left ventricular ejection fraction and stroke volume index were evaluated by transthoracic echocardiography at discharge. Abbreviations as in Table 1.								

Supplementary Table 6. Crude hazard ratios for clinical outcomes according to the method for the definition of PPM.

	Measured PPM				Predicted PPM _{THV}			
	Moderate vs. None		Severe vs. None		Moderate vs. None		Severe vs. None	
	Crude HR (95% CI)	P value	Crude HR (95% CI)	P value	Crude HR (95% CI)	P value	Crude HR (95% CI)	P value
At 1 year								
All-cause death, n (%)	1.18 (0.89-1.55)	0.245	1.14 (0.74-1.75)	0.547	0.49 (0.29 - 0.82)	0.007	0.62 (0.15 - 2.50)	0.501
Cardiovascular death, n (%)	1.29 (0.92-1.82)	0.138	1.25 (0.73-2.12)	0.413	0.52 (0.27 - 0.98)	0.044	0.99 (0.24 - 3.99)	0.986
Structural valve deterioration, n (%)	1.03 (0.49-2.17)	0.930	1.60 (0.61-4.22)	0.339	1.18 (0.46 - 3.01)	0.736	-	-
Repeat aortic valve intervention, n (%)	1.08 (0.38-3.11)	0.884	2.69 (0.86-8.45)	0.090	2.59 (0.94 - 7.12)	0.065	-	-
At 5 year								
All-cause death, n (%)	1.18 (0.99-1.41)	0.066	1.01 (0.77-1.33)	0.938	0.64 (0.47 - 0.88)	0.005	0.59 (0.25 - 1.43)	0.247
Cardiovascular death, n (%)	1.27 (1.03-1.57)	0.024	1.05 (0.75-1.46)	0.770	0.70 (0.49 - 1.00)	0.048	0.70 (0.26 - 1.87)	0.477
Structural valve deterioration, n (%)	1.35 (0.73-2.51)	0.339	2.13 (1.01-4.48)	0.047	1.03 (0.44 - 2.40)	0.949	-	-
Repeat aortic valve intervention, n (%)	1.09 (0.42-2.81)	0.860	2.44 (0.89-6.72)	0.084	3.03 (1.27 - 7.21)	0.012	-	-

At 10 year								
All-cause death, n (%)	1.17 (0.99-1.38)	0.061	1.11 (0.86-1.44)	0.409	0.69 (0.52 - 0.90)	0.00 7	0.57 (0.26 - 1.28)	0.17 6
Cardiovascular death, n (%)	1.24 (1.02-1.51)	0.029	1.17 (0.87-1.59)	0.304	0.71 (0.52 - 0.98)	0.03 9	0.67 (0.28 - 1.62)	0.37 2
Structural valve deterioration, n (%)	1.21 (0.67-2.20)	0.528	2.05 (0.98-4.28)	0.056	1.11 (0.51 - 2.45)	0.78 9	-	-
Repeat aortic valve intervention, n (%)	1.07 (0.44-2.58)	0.887	2.36 (0.87-6.42)	0.093	3.79 (1.72 - 8.34)	0.00 1	-	-
<p>Event counts with Kaplan-Meier failure rates (%) counting the first event of each type only per patient. Patients were censored at last valid contact with events assessed and adjudicated. Adjusted hazard ratios and p-values after adjusting for age, gender and STS-PROM.</p> <p>CI = confidence interval; HR = hazard ratio; PPM = prosthesis-patient mismatch; STS -PROM = society of thoracic surgeons predicted risk of mortality.</p>								

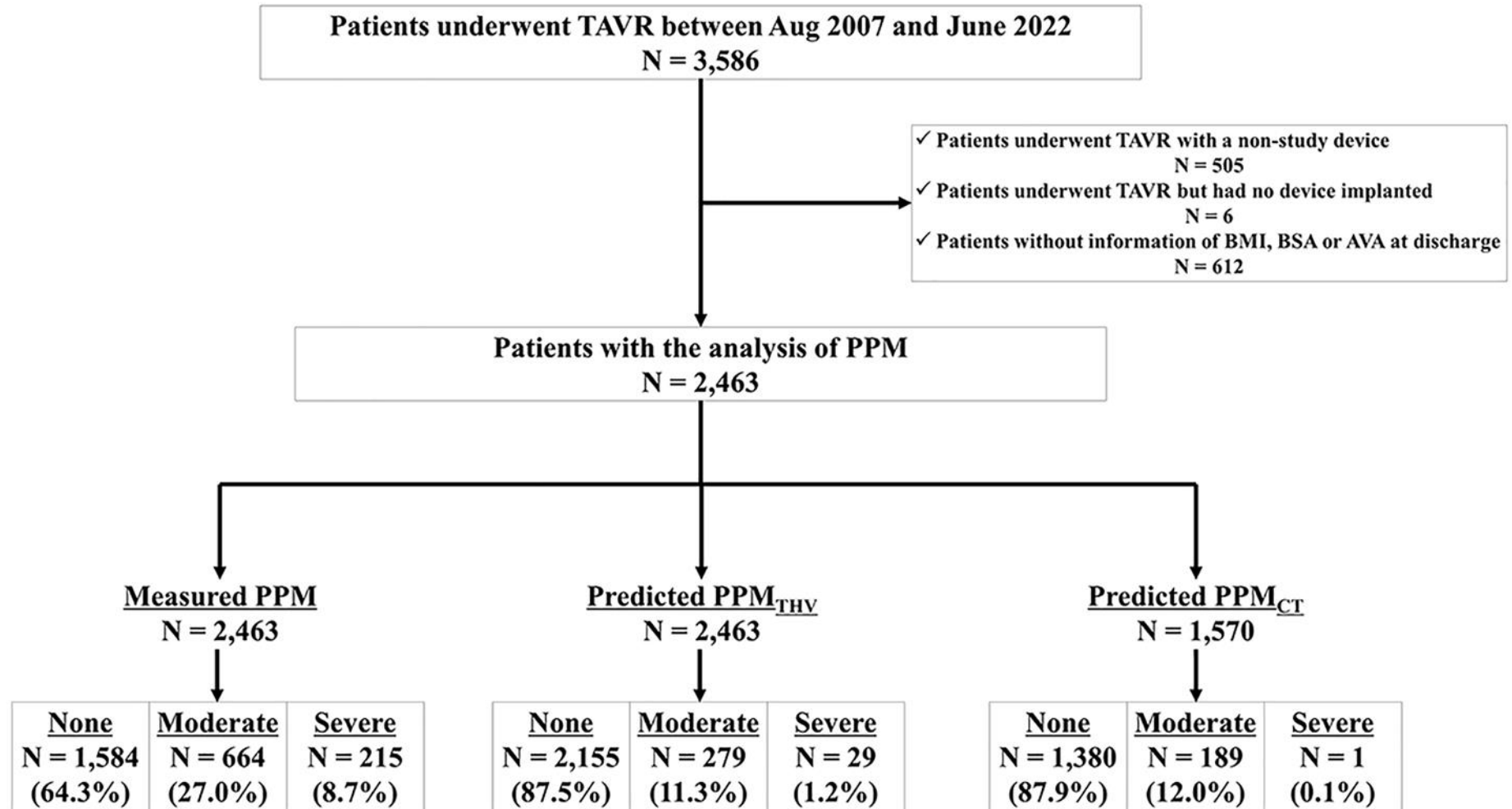
Supplementary Table 7. Residual heart failure symptoms according to the method for the definition of PPM.

	Measured PPM							Predicted PPM _{THV}						
	None	Moderate	Severe	Moderate vs. None	Severe vs. None		None	Moderate	Severe	Moderate vs. None	Severe vs. None			
	N=15 84	N=6 64	N=2 15	RR (95% CI)	P value	RR (95% CI)	P value	N=21 55	N=2 79	N=2 9	RR (95% CI)	P value	RR (95% CI)	P value
NYHA class III or IV (%) at 1 year	127/1244 (10.2%)	53/517 (10.3%)	18/71 (10.5%)	1.0 (0.74 - 1.36)	0.097	1.03 (0.65 - 1.65)	0.89	173/1683 (10.3%)	21/225 (9.3%)	4/4 (16.7%)	0.91 (0.59 - 1.40)	0.66	1.62 (0.66 - 4.01)	0.296
NYHA class III or IV (%) at 5 years	57/66 (15.6%)	19/31 (14.5%)	6/57 (10.5%)	0.93 (0.58 - 1.50)	0.771	0.68 (0.31 - 1.50)	0.333	72/89 (14.7%)	9/6 (16.1%)	1/9 (11.1%)	1.09 (0.58 - 2.06)	0.787	0.75 (0.12 - 4.86)	0.677
NYHA class III or IV (%) at 10 years	6/34 (17.6%)	2/7 (28.6%)	1/1 (100.0%)	1.62 (0.40 - 6.53)	0.498	5.67 (2.72 - 11.8)	<0.001	8/37 (21.6%)	1/4 (25.0%)	0/1 (0%)	1.16 (0.19 - 7.19)	0.876	-	-

Risk ratios (95% CIs) from robustified Poisson regression are reported, with corresponding P values. CI = confidence interval; NYHA = New York Heart Association; RR = risk ratio; PPM = prosthesis-patient mismatch; PPM_{THV} = prosthesis-patient mismatch defined by the normal reference values of effective orifice area for each size and model of implanted transcatheter heart valve.

Cardiovascular death, n (%)	1.17 (0.98-1.39)	0.082	1.13 (0.86-1.49)	0.376	0.70 (0.5 2- 0.94)	0.018	0.66 (0.2 8- 1.58)	0.35 4
Structural valve deterioration, n (%)	1.17 (0.68-2.02)	0.577	1.71 (0.83-3.52)	0.144	1.19 (0.5 7- 2.50)	0.639	-	-
Repeat aortic valve intervention, n (%)	1.17 (0.53-2.58)	0.702	2.03 (0.76-5.42)	0.159	3.89 (1.8 3- 8.24)	<0.00 1	-	-
<p>Competing risk with death, or in case of cardiovascular death with non-cardiovascular death, reported are subdistributions of the hazard ratio (SHR) with confidence intervals (95% CI). Adjusted hazard ratios and p-values after adjusting for age, gender and STS-PROM.</p> <p>PPM = prosthesis-patient mismatch; PPMTHV = prosthesis-patient mismatch defined by the normal reference values of effective orifice area for each size and model of implanted transcatheter heart valve; STS -PROM = society of thoracic surgeons predicted risk of mortality.</p>								

Supplementary Figure 1. Study flowchart.



AVA = aortic valve area; BMI = body mass index; BSA = body surface area. Other abbreviations as Central Illustration.