

Lipid-lowering therapy and percutaneous coronary interventions

Konstantinos C. Koskinas¹, MD, MSc; François Mach², MD; Lorenz Räber^{1*}, MD, PhD

1. Department of Cardiology, Bern University Hospital, University of Bern, Bern, Switzerland; 2. Department of Cardiology, Geneva University Hospital, Geneva, Switzerland

KEYWORDS

- ACS/NSTE-ACS
- adjunctive pharmacotherapy
- stable angina

Abstract

Although technological and procedural advances have resulted in substantial improvements in clinical outcomes following percutaneous coronary interventions (PCI), recurrent coronary events may occur despite achieving optimal procedural results. Beyond myocardial revascularisation failure related to anatomical or stent-related factors, adverse cardiovascular events post PCI often arise from non-culprit lesions not treated during index interventions. While stenting treats a focal manifestation of a systemic, progressive disease, the residual risk following an acute coronary syndrome (ACS) or elective PCI is largely related to the systemic pro-atherogenic effects of suboptimally controlled cardiovascular risk factors. Lowering atherogenic lipid levels, in particular low-density lipoprotein cholesterol (LDL-C), can halt the progression of coronary atherosclerosis and improve cardiovascular outcomes to an extent that is proportional to the magnitude of LDL-C reduction. Early (in-hospital) initiation of intensive statin therapy leads to a very early clinical benefit following ACS, and prolonged adherence to optimised lipid-lowering treatment effectively reduces longer-term cardiovascular events following PCI. Therefore, achieving guideline-recommended treatment goals for LDL-C with statins and, if indicated, with the addition of non-statin lipid-lowering drugs should become a priority for all physicians involved in the treatment of patients with coronary heart disease, including comprehensive strategies initiated during the in-hospital care of patients undergoing coronary interventions. This review article summarises current evidence on the role of LDL-C in the development and progression of coronary atherosclerosis, discusses the clinical benefits of intensive lipid-lowering treatments, and presents current guideline recommendations, with emphasis on patients undergoing PCI.

*Corresponding author: Department of Cardiology, Bern University Hospital, Freiburgstrasse 4, 3010 Bern, Switzerland.
E-mail: lorenz.raeber@insel.ch

Introduction

Over the past decades, myocardial revascularisation procedures have evolved to provide safer and more effective treatment for patients with acute and chronic manifestations of coronary artery disease (CAD)¹. Advances in stenting technologies and interventional techniques, along with invasive diagnostic tools and adjunctive pharmacotherapies, have resulted in improved survival, prevention of future myocardial infarctions (MI), relief of symptoms and better quality of life following percutaneous coronary interventions (PCI)¹. Nonetheless, recurrent ischaemic events are frequent following both acute coronary syndromes (ACS) and elective PCI, resulting either from previously treated lesions, or from progression of native atherosclerotic disease. One in five patients will experience a major cardiovascular (CV) event during the first year following an MI², indicating considerable residual risk and thus a need for prolonged surveillance and optimal risk factor control. Notably, the prevalence of suboptimally controlled modifiable risk factors remains high³, and the use of guideline-directed secondary prevention medications declines over time following a coronary revascularisation procedure, contributing to worse long-term outcomes^{4,6}.

Atherogenic lipoproteins, in particular low-density lipoprotein cholesterol (LDL-C), are key causal factors of atherosclerotic cardiovascular disease (ASCVD)^{7,8}. Intensive LDL-C lowering halts the progression of atherosclerosis and improves clinical outcomes, with a clinical benefit that is proportional to the magnitude of LDL-C reduction⁹⁻¹¹. Importantly, very early clinical benefit has been demonstrated when intensive statin treatment is initiated in the acute phase of ACS¹²⁻¹⁴. Despite the compelling evidence, lipid-lowering treatment is often suboptimal among patients who have experienced an ACS or undergone PCI^{15,16}. Against this background, there is a need for better awareness and implementation of recommended lipid-lowering strategies across the spectrum of the management of CAD patients, including the time point of hospitalisation for an ACS or elective PCI. A patient-centred approach should not only ensure an optimal procedural result of the interventional treatment, but also focus on optimal post-PCI medical care – including lipid-lowering treatment. The contribution of the interventional cardiologist should not be underestimated, as the overall recommendations provided in the interventional report have a considerable impact on post-PCI management for both patients and referring cardiologists/general practitioners and should not be restricted to antithrombotic treatment.

This review article summarises current evidence on the role of LDL-C in the development and progression of CAD, discusses the clinical benefits of intensive lipid-lowering treatments, and presents current guideline recommendations with emphasis on treatment in the acute phase of ACS or following PCI. We propose pragmatic, guideline-conforming algorithms for lipid management starting from the in-hospital period, involving the critical input of interventional cardiologists.

Role of lipids in atherosclerotic disease

Overwhelming evidence from preclinical research, Mendelian randomisation studies, epidemiological investigations and randomised

controlled trials (RCTs) unequivocally shows that LDL-C has a causal and cumulative effect on the risk of ASCVD^{7,8}. Several mutations in genes involved in LDL-C homeostasis leading to elevated plasma LDL-C levels (typically in the context of familial hypercholesterolaemia [FH]) are closely associated with progressive, early-onset CAD^{17,18}; in contrast, naturally occurring mutations that result in lifelong exposure to very low LDL-C levels (e.g., loss-of-function mutations of the PCSK9 enzyme) are linked to a remarkably low incidence of CAD¹⁹. In epidemiological observations, high LDL-C levels are consistently associated with a higher risk of clinical ASCVD²⁰. Finally, large-scale RCTs clearly demonstrate a significant reduction in cardiovascular disease (CVD) events with statins as well as non-statin lipid-lowering medications⁹⁻¹¹. Taken together, the available evidence shows that the higher the LDL-C levels and the longer the exposure to such elevated levels, the higher the risk of developing ASCVD. Conversely, lowering LDL-C reduces the risk of ASCVD proportionally to the absolute reduction in LDL-C levels⁷. Other lipids are also involved in the pathobiology of atherosclerosis; however, LDL-C is currently recommended as the primary lipid measurement for risk assessment and treatment guidance.

On the basis of this evidence, current European Guidelines²¹ recommend (class I/A) a reduction of LDL-C levels by at least 50% and the achievement of an LDL-C goal <1.4 mmol/L (<55 mg/dL) for all patients with ASCVD – i.e., including those who present with ACS or undergo PCI. All patients should receive long-term lipid-lowering therapy starting with a statin, and treatment should be intensified in a stepwise approach (up-titration of statin dose or addition of a non-statin drug, if needed) in order to reach the recommended goal²¹. For patients who experience a second vascular event within two years while taking maximally tolerated statin-based therapy, an even lower LDL-C goal <1.0 mmol/L (<40 mg/dL) may be considered (IIb/B recommendation)²¹.

Of particular relevance for interventional practice, atherogenic lipids may be involved in the development of in-stent neoatherosclerosis, one of the leading causes of late stent failure including restenosis and stent thrombosis²². An observational study suggested that in-stent neoatherosclerosis is more common among patients with angiographic and clinical evidence of native atherosclerosis progression, suggesting similar pathophysiological mechanisms²³. These observations raise the possibility that LDL-C lowering therapies may reduce the risk of late-occurring stent failure. As a proof of concept, a small randomised trial comparing treatment with 10 mg rosuvastatin and eicosapentaenoic acid versus 2.5 mg rosuvastatin in 50 Japanese CAD patients with evidence of established neoatherosclerosis showed a greater decrease of lipid content and macrophage accumulation by means of optical coherence tomography (OCT) in the more intensive treatment group²⁴. A larger ongoing imaging trial on the vascular effects of the PCSK9 inhibitor (PCSK9i) alirocumab, focused primarily on the progression of native atherosclerosis in non-culprit vessels of patients with MI, will also test whether the occurrence of neoatherosclerosis can be reduced among patients receiving very intensive LDL-C lowering treatment (NCT03067844).

Effect of statins on cardiovascular outcomes in patients with CAD (including ACS and post PCI)

Statins are the cornerstone for lowering lipid levels. There is robust RCT evidence for the safety and efficacy of these medications, and vast real-world experience with hundreds of millions of individuals worldwide currently receiving statin treatment. The most comprehensive meta-analysis of statin trials pooled data from 26 RCTs with 170,000 individuals in primary and secondary prevention and showed that lowering of LDL-C by 1.0 mmol/L reduces the risk of major CV events by 22% and lowers all-cause mortality by 10%. Of note, the mean untreated LDL-C of patients with CAD is in the range of about 3.0-3.5 mmol/L; considering that potent statin regimens can reduce LDL-C levels by about 45-50% (**Figure 1**), this would translate to an absolute LDL-C reduction of about 1.5 mmol/L on average and thus a statin-mediated reduction in the risk of CV events by approximately one third.

Studies that focused specifically on the acute ACS period were able to show a very early clinical benefit associated with early initiation of intensive statin treatment in this setting. The MIRACL trial compared atorvastatin 80 mg versus placebo, initiated 24-96 hours after admission for an ACS in 3,086 patients and found a significant, 16% reduction in major adverse cardiovascular events (MACE) within only 16 weeks of follow-up (14.8 vs 17.4%; $p=0.048$)¹². The PROVE-IT trial compared atorvastatin 80 mg versus pravastatin 40 mg in 4,162 stabilised ACS patients, enrolled within <10 days of the index event. This study found a 16% reduction in MACE (26.3% vs 22.4%; $p=0.005$) within a mean follow-up of 24 months¹³. A *post hoc* analysis of PROVE-IT found a positive effect as early as 30 days after the ACS event (HR 0.72, CI: 0.52-0.99; $p<0.05$)¹⁴. Based on this evidence, current ESC guidelines recommend that patients who present with an ACS are treated with a high-intensity statin (atorvastatin ≥ 40 mg or rosuvastatin ≥ 20 mg daily), initiated as early as possible and irrespective of their baseline LDL-C levels, unless such a treatment is contraindicated or not tolerated (class I/A recommendation) (**Figure 2**)²¹.

As it relates to elective PCI, these patients by definition have a very high CV risk and should receive intensive lipid-lowering treatment to achieve the recommended LDL-C goal <1.4 mmol/L²¹. A practical question, with implications for interventional cardiologists, has been the optimal timing of statin initiation, and whether statin pre-loading prior to elective PCI is beneficial. An individual patient-level meta-analysis of 13 RCTs including 3,341 patients undergoing PCI showed that either pre-treatment with high-dose statin (for statin-naïve patients) or loading of a high-dose statin (for patients already on statin therapy) reduced the risk of periprocedural MI and 30-day adverse CV events by 44% (7.0% vs 11.9%, $p<0.0001$, and 7.4% vs 12.6%, $p=0.05$, respectively)²⁵. Moreover, statin pre-treatment appears to be effective in reducing the risk of contrast-induced acute kidney injury, presumably due to the so-called pleiotropic effects of statins²⁶.

Regarding statin pre-loading in the ACS setting, in the Statins Evaluation in Coronary Procedures and Revascularization (SECURE-PCI) trial, patients ($n=4,191$) with ACS planned for invasive management were randomly assigned to receive loading with 80 mg atorvastatin or placebo before and 24 hours after PCI; all patients were treated with atorvastatin 40 mg 24 hours after the second study drug dose. At 30 days, the rate of the primary outcome (composite of all-cause death, MI, stroke, and unplanned coronary revascularisation) did not differ between groups²⁷. A pre-specified subgroup analysis including only patients who were actually treated with PCI (64% of all patients) showed a significant, 28% relative reduction in 30-day MACE (HR 0.72 [0.54-0.96]; $p=0.02$), an effect that was more pronounced in patients with ST-elevation myocardial infarction (STEMI)²⁷. Limitations of sub-analyses in the context of an overall neutral study cannot be ignored.

While the evidence for pre-loading remains in part debatable, based on current evidence of potential benefit without evidence of harm, routine pre-treatment or loading (on a background of chronic therapy) with a high-dose statin should be considered in patients undergoing PCI for an ACS or elective PCI according to the current ESC guidelines (class IIa/B recommendation) (**Figure 2**)²¹.

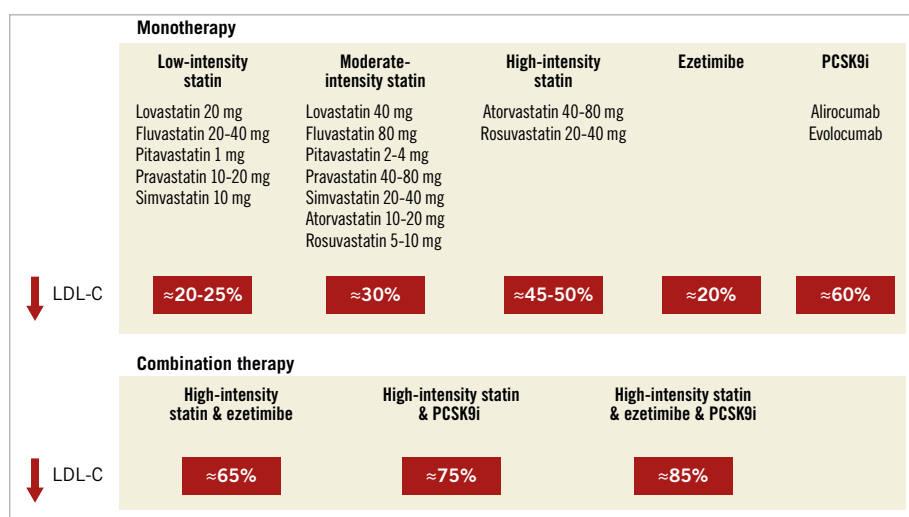


Figure 1. Anticipated average reduction in LDL-C levels with different lipid-lowering monotherapies or combination therapies.

ACS (in-hospital phase)	
High-intensity statin Starting a high-intensity statin as early as possible, regardless of initial LDL-C values, in all ACS patients without contraindication or intolerance	Is recommended I/A
PCSK9i Adding a PCSK9i early after the event (during hospitalisation for the ACS if possible) for ACS patients whose LDL-C levels are not at goal despite already taking a maximally tolerated statin dose and ezetimibe	Should be considered IIa/C
ACS (post-discharge)	
Ezetimibe Adding ezetimibe if LDL-C is not at goal 4-6 weeks after ACS despite treatment with maximally tolerated statin dose	Is recommended I/B
PCSK9i Adding a PCSK9i if LDL-C is not at goal 4-6 weeks after ACS despite treatment with maximally tolerated statin dose and statin	Is recommended I/B
PCI (elective, or for ACS)	
Statin pre-treatment/loading Routine pre-treatment or loading (on a background of chronic therapy) with a high-dose statin	Should be considered IIa/B

Figure 2. Recommendations of current ESC dyslipidaemia guidelines pertinent to the treatment of patients who present with ACS or undergo PCI.

Side effects of statins

Although statins are generally very well tolerated, they have some adverse effects²⁸. Muscle-related effects are the most clinically relevant side effect of statins and appear to be dose-dependent. Statin-treated patients frequently report muscle symptoms, and in observational studies their frequency has varied between 10 and 15%^{29,30}. However, these figures are an overestimation of true, statin-induced myopathy, mostly due to the unblinded treatment in observational studies and the non-specific nature of such symptoms³¹. In sharp contrast, evidence from blinded, placebo-controlled RCTs shows only a slightly increased frequency of muscle symptoms in statin-treated patients³². Importantly, an analysis comparing the incidence of muscle-related symptoms during both the blinded period and the subsequent, open-label extension study of the ASCOT-LLA trial showed that a “nocebo” effect (caused by negative expectations) may partly explain the higher frequency of reported muscle symptoms in observational studies³³. These findings were recently reinforced in the SAMSON study, indicating that side effects are caused mainly by the act of taking tablets rather than the statin per se³⁴. Rhabdomyolysis, the most severe form of statin-induced muscle damage, is extremely rare, with an estimated incidence of 1-3 cases per 100,000 patient-years³⁵. Risk factors for statin-induced myopathy should be considered, particularly older age, history of muscle symptoms, untreated hypothyroidism, excessive alcohol intake, low body mass index, and interaction with concomitant drug therapy. When statin therapy is initiated, safety blood tests including alanine transferase (ALT) and creatine kinase (CK) at baseline are advised to identify the few patients in whom treatment is contraindicated. There is no predictive value of routine repeat CK testing,

but CK must be assessed immediately in patients who present with muscle pain and weakness, and statin treatment must be stopped if CK rises to >10 times the upper limit of normal (ULN).

Mild elevations of liver enzymes occur in 0.5-2.0% of statin-treated patients; they do not appear to be associated with true hepatotoxicity and are more frequent with high doses of potent statins³⁶. An increase of three times the ULN on two consecutive occasions is considered clinically relevant. ALT testing is recommended before the start of statin therapy, with the exception of ACS patients where ALT may increase due to myocardial necrosis. Because progression to liver failure is exceedingly rare, routine monitoring of liver enzymes during statin treatment is no longer recommended²¹; ALT should be tested if deemed clinically indicated.

Statin use can result in a slight increase in the risk of diabetes²⁸. The number needed to cause one case of diabetes is estimated at 255 over four years of statin treatment³⁷; the risk is higher with higher doses of more potent statins³⁸, in the elderly and patients with metabolic syndrome. Overall, the absolute reduction in the risk of CVD in high-risk patients clearly outweighs the small increase in the incidence of diabetes (1 out of 1,000 per year with new-onset diabetes vs 5 CV events prevented)³¹. In addition, the use of statins is associated with a minimal increase in haemorrhagic stroke^{9,39}; however, the overall benefit on other stroke subtypes greatly outweighs this small hazard^{9,40}.

Effect of non-statin LDL-C lowering medications on cardiovascular outcomes

Despite the potent LDL-C lowering effect of statins (**Figure 1**), many patients cannot achieve an adequate reduction in LDL-C

levels with statins alone (typically due to particularly elevated untreated levels) or cannot tolerate regimens with high doses of potent statins. In these patients, add-on treatment with non-statin medications (ezetimibe or PCSK9 inhibitors [PCSK9i]) is a valuable option.

Ezetimibe reduces the intestinal absorption of dietary and biliary cholesterol. It lowers LDL-C levels by 15-22% when given as monotherapy, and by 21-27% on top of statin therapy^{41,42}. Regarding the impact of CV outcomes, the IMPROVE-IT trial was an RCT including 18,144 ACS patients enrolled <7 days from the index event⁴³. Patients were treated with statin alone (simvastatin 40 mg) versus the combination of statin plus ezetimibe. The study found a modest but significant reduction in MACE within seven years of follow-up (HR 0.936, $p=0.016$)⁴³. Based on this trial, the addition of ezetimibe is recommended (class I/B indication) for all patients who have not achieved the LDL-C goal despite treatment with maximally tolerated statin therapy (**Figure 2**)²¹.

More recently, monoclonal antibodies inhibiting the PCSK9 enzyme have emerged as a promising treatment option to lower LDL-C levels further⁴⁴. The currently approved antibodies evolocumab and alirocumab are administered subcutaneously every 2-4 weeks and lower LDL-C levels by approximately 60% on top of statin, while maintaining a favourable safety profile^{45,46}. Large outcomes trials have shown a significant clinical benefit in the context of secondary CV prevention. In the FOURIER trial, 27,564 patients with a history of MI (81.1% of patients) and/or non-coronary ASCVD manifestations were treated with optimised statin alone versus optimised statin plus evolocumab. The study found a 15% relative risk reduction for the primary endpoint (a composite of CV death, MI, stroke, hospitalisation for unstable angina, or coronary revascularisation), and a 20% relative risk reduction for the “harder” triple endpoint (CV death, MI or stroke) within a median follow-up of 2.2 years⁴⁷. Very similarly, in the ODYSSEY OUTCOMES trial involving 18,924 patients with a history of ACS (1-12 months prior to enrolment), treatment with statin plus alirocumab versus statin alone resulted in a 15% reduction in MACE and was associated with a significant nominal p -value for reduction in all-cause mortality within a median 2.8-year follow-up⁴⁸. With the exception of injection-site reactions, adverse events and laboratory abnormalities were similar in the alirocumab and placebo groups⁴⁸. Both trials included patients with a history of ACS/MI (on average 2.6 months post ACS for ODYSSEY OUTCOMES vs a longer interval [more than one year in 74% of patients] after the qualifying MI for FOURIER). More recently, the EVOPACS trial showed the feasibility, safety, and potent LDL-C lowering efficacy of evolocumab initiated on top of high-intensity statin in the acute phase of ACS (within 24-72 hours of symptom onset)⁴⁹. More than 90% of patients treated with atorvastatin 40 mg plus evolocumab, versus 10.7% of those treated with atorvastatin alone, achieved the recommended LDL-C target (<1.4 mmol/L) eight weeks after the index ACS event, without raising safety concerns⁴⁹. Thereby, this proof-of-concept study

proposed a new paradigm for very early, very intensive LDL-C reduction for selected ACS patients who are not anticipated to reach the recommended LDL-C target with intensive statin therapy alone. The ESC guidelines recommend PCSK9i (class I/A) for all patients with ASCVD and LDL-C levels >1.4 mmol/L despite treatment with maximally tolerated statin plus ezetimibe²¹. The addition of a PCSK9i early after an ACS event (during hospitalisation, if possible) should be considered in patients who present with an ACS and whose LDL-C is not at goal level, despite already being on a maximally tolerated statin dose and ezetimibe (IIa/C recommendation) (**Figure 2**)²¹.

Beyond LDL-lowering drugs, therapies aimed primarily at lowering triglyceride levels (polyunsaturated fatty acids) have resulted in a reduction of MACE in patients with ASCVD or diabetes with additional risk factors⁵⁰, although these effects were not confirmed in a recent outcomes trial.

Factors affecting the clinical benefit of lipid-lowering therapies

The expected clinical benefit of LDL-C-lowering treatment depends on the baseline (untreated) LDL-C levels, the intensity of lipid-lowering therapy, and the baseline estimated absolute CV risk⁹. The anticipated relative (%) reduction of LDL-C levels with each monotherapy or combination therapy is summarised in **Figure 1**; it should be noted, however, that there is marked inter-individual variability in treatment response. For any given baseline LDL-C level, the relative reduction dictates the magnitude of absolute LDL-C reduction. Based on the pooled evidence from statin trials discussed above, an approximately 20% relative reduction in the risk of CV events is anticipated per 1.0 mmol/L (38 mg/dL) of lowering LDL-C⁹. Thereby, larger absolute reductions in LDL-C levels lead to larger proportional (%) reductions in risk. Finally, the absolute risk reduction can be calculated by multiplying the absolute baseline risk by the anticipated relative (proportional) risk reduction: the greater the baseline risk, the greater the absolute benefit in terms of lowering the risk of CV events for any given relative risk reduction²¹ (**Figure 3**). By definition, CV risk is considered “very high” for all patients with ASCVD, i.e., including those with ACS or undergoing PCI. However, there is substantial heterogeneity of risk within this broad group of secondary prevention patients: the likelihood of recurrent ischaemic events is higher among patients with progressive disease (i.e., history of multiple previous events), anatomically more complex disease (particularly residual disease following revascularisation), or multiple, uncontrolled risk factors. Along these lines, outcomes trials of PCSK9i showed that the risk of recurrent events among patients with clinically manifest CAD was higher for patients with multiple prior MIs versus only one MI, with a recent MI versus a more remote MI, residual multivessel CAD, and polyvascular disease (i.e., including other vascular beds besides the coronary arteries)^{49,50}. Importantly, and consistent with the concept summarised in **Figure 3**, these patients experienced greater risk reductions with intensive LDL-C lowering with evolocumab

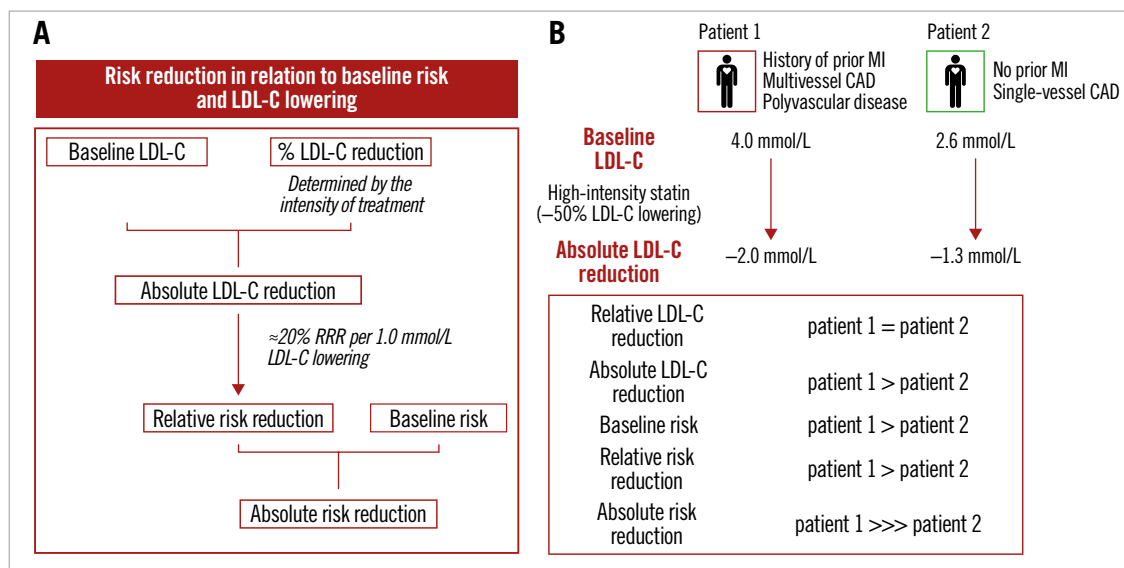


Figure 3. Expected clinical benefit of LDL-C lowering. *A)* Baseline LDL-C levels and the anticipated relative LDL-C reduction with a lipid-lowering medication both determine the expected magnitude of absolute achieved LDL-C lowering. Each 1.0 mmol/L absolute reduction in LDL-C levels is associated with an approximately 20% relative reduction in the risk of cardiovascular events, such that larger absolute LDL-C reductions result in larger proportional reductions in risk. The absolute risk reduction is driven by both the relative risk reduction and absolute baseline risk. *B)* Case example of two patients presenting with ACS but with different baseline (untreated) LDL-C levels and risk profiles. In both patients, guideline-recommended treatment with a high-intensity statin is expected to bring a similar (approximately 45-50%) reduction in LDL-C levels; a larger absolute LDL-C reduction, and thereby a 1.5-fold larger proportional reduction in CV risk (about 20% per 1.0 mmol/L LDL-C lowering), is estimated for patient 1 due to the higher baseline LDL-C levels. Coupled with a higher baseline risk in patient 1 (due to a history of previous MI, multivessel CAD and polyvascular disease), and although a significant risk reduction is estimated for both patients, the absolute risk reduction is expected to be substantially higher for patient 1.

or alirocumab compared to patients without these additional very high-risk characteristics^{52,53}.

Specific considerations with implications for interventional cardiologists

PATIENTS WITH ACUTE CORONARY SYNDROME

Patients presenting with ACS carry the highest risk for recurrent events⁵⁴, as the systemic inflammatory reactions in this setting may trigger plaque growth and destabilisation at non-culprit lesion sites⁵⁵. ACS patients harbour more vulnerable plaques in their non-infarct-related arteries compared with patients with chronic coronary syndromes (CCS)⁵⁶. Optimal secondary prevention therapies are therefore of particular relevance following ACS in order to improve early and long-term prognosis. Early (i.e., during index hospitalisation) initiation of high-intensity statin therapy (atorvastatin ≥ 40 mg or rosuvastatin ≥ 20 mg) is a cornerstone of ACS therapy, independent of the presence of CV risk factors or LDL-C levels²¹. Treatment should be initiated as early as possible to increase patient adherence after discharge, unless contraindicated or not tolerated, or unless the origin of the ACS is non-atherosclerotic (e.g., spontaneous dissection or embolism).

LDL-C should be measured during the index hospitalisation in all ACS patients, either prior to or after the intervention. The difference between fasting and non-fasting LDL-C measurement is

minimal in most cases, so that non-fasting samples are generally preferred for practical reasons. Although LDL-C levels decrease during the first days following ACS admission (in part related to the acute phase response resulting in upregulation of LDL-receptor activity) and subsequently increase again, these changes are in the range of 2-5% and thus have no clinical relevance⁵⁷.

For patients who present with an ACS and are statin-naïve or have been on a low- or moderate-intensity statin regimen, the first step during hospitalisation should be initiation of, or uptitration to, high-intensity statin. If patients are on a high-intensity statin, but not at the highest approved dose (i.e., on atorvastatin 40 mg or rosuvastatin 20 mg), increasing the dose further (i.e., to atorvastatin 80 mg or rosuvastatin 40 mg) is reasonable, but one should consider the minimal ($\approx 6\%$) incremental LDL-C reduction with this uptitration as well as the dose-dependent nature of side effects of statins for patients at higher risk of such effects. In a subsequent, ambulatory control 4-6 weeks later, LDL-C levels should be measured, and ezetimibe should be added if LDL-C is still >1.4 mmol/L (**Figure 4**)²¹. The recommendation for subsequent measurement (and ezetimibe addition, if needed) should be explicitly stated in the discharge letter. However, if a patient presents already on optimised (high-intensity, or maximally tolerated) statin therapy and has an LDL-C >1.4 mmol/L, or is not on treatment and presents with an untreated LDL-C of >3.5 mmol/L (which is

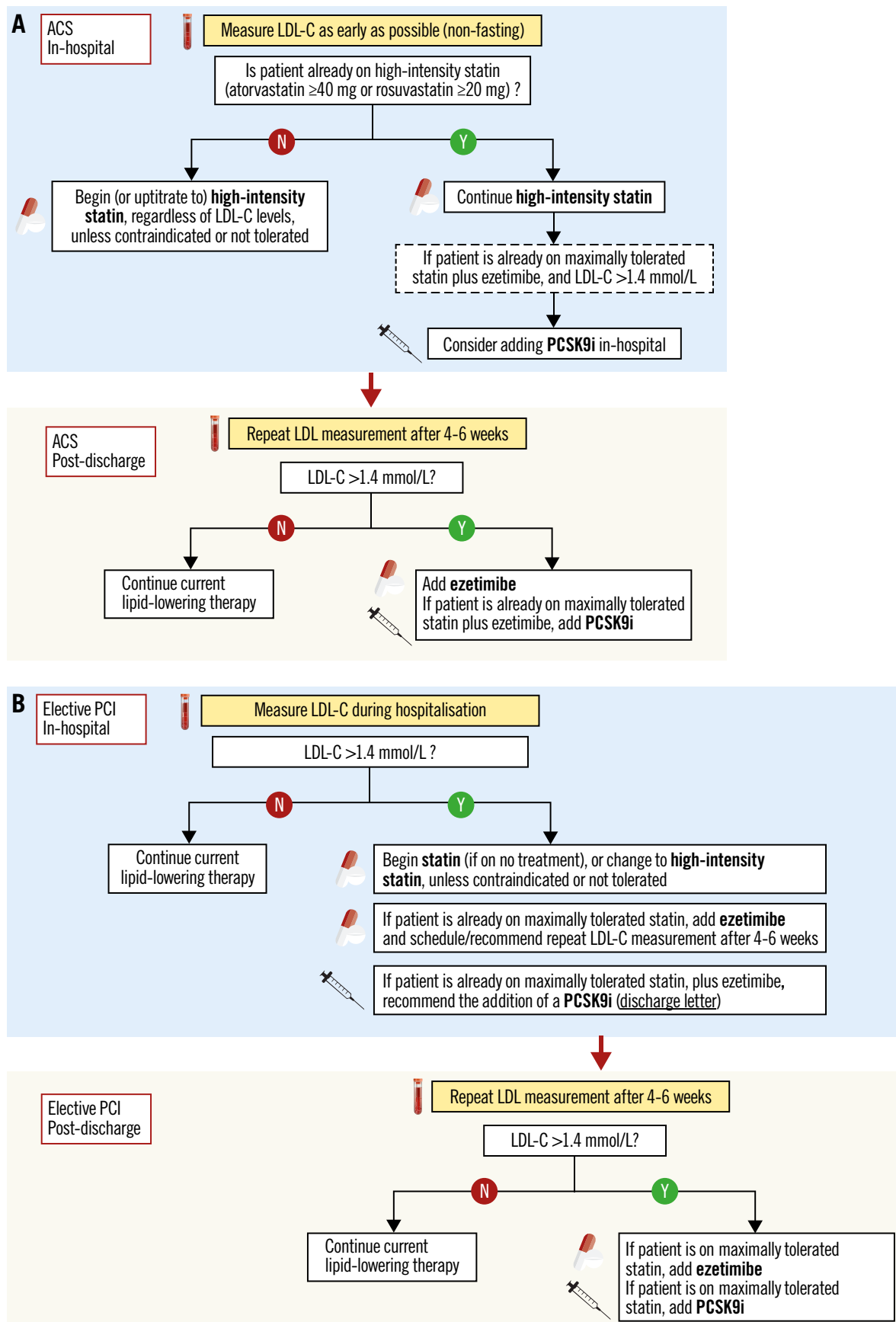


Figure 4. Proposed algorithm for in-hospital and post-discharge lipid management of patients presenting with ACS (A) or undergoing elective PCI (B).

unlikely to be lowered to <1.4 mmol/L given the approximately 50% LDL-C-lowering effect of high-intensity statin alone), then it may be reasonable to add ezetimibe during the hospitalisation for an ACS event rather than delay the treatment intensification to a later point in time. The latter approach is not specifically recommended by current guidelines but is a pragmatic approach that is consistent with evidence showing “the lower, the better” and “the sooner, the better” for LDL-C lowering in the ACS context, and is supported by the overall very good tolerability of ezetimibe.

If an ACS patient presents with an LDL-C >1.4 mmol/L despite already being on maximal statin plus ezetimibe therapy, then starting a PCSK9i early on, in-hospital if possible, should be considered according to current guidelines (**Figure 4**)²¹. One should keep in mind that: (i) in real-world practice, it is very infrequent for a patient with ACS (either first, or recurrent event) to present on a combination therapy of maximal statin plus ezetimibe; and (ii) regulatory restrictions make an approach of very early, in-hospital initiation of a PCSK9i very challenging, and national reimbursement policies are considerably stricter than guideline recommendations. In any case, in order to increase subsequent treatment adherence, potential eligibility for PCSK9i treatment should be evaluated as early as possible, i.e., in-hospital, based on the first LDL-C measurement, and afterwards at the repeat LDL-C measurement 4-6 weeks after the ACS event. Pragmatically, patients who present with an untreated LDL-C >4.0 mmol/L are not likely to reach the <1.4 mmol/L goal under combination treatment with high-intensity statin and ezetimibe (based on the average 65% LDL-C reduction anticipated with this combination) (**Figure 1**) and are therefore likely to qualify for a PCSK9i treatment²¹. According to a recent Swiss study, 51% of patients would be eligible for a PCSK9i treatment according to ESC guideline criteria one year following ACS⁵⁸.

PATIENTS UNDERGOING ELECTIVE PCI

Similar to the ACS scenario, patients receiving PCI for CCS belong to the very high-risk category, and thus similar treatment goals apply (LDL-C goal of <1.4 mmol/L and a reduction $>50%$ from baseline)²¹.

In statin-naïve patients, routine initiation of statin therapy is indicated unless safety concerns exist, at an intensity that should be tailored to enable reaching the LDL-C goal (based on the untreated LDL-C levels and the anticipated reduction with different statin regimens) (**Figure 1**). Specifically regarding patient age, based on recent evidence⁵⁹, the current ESC guidelines recommend that older people with ASCVD receive statin treatment in the same way as younger patients (class I/A recommendation)²¹. However, it is recommended that the statin is started at a low dose if there is significant renal impairment and/or the potential for drug interactions, and then uptitrated as needed to achieve LDL-C goals. A repeat LDL-C measurement after 4-6 weeks should be scheduled if high-intensity statin therapy is not anticipated to result in an LDL-C of <1.4 mmol/L (i.e., if baseline untreated LDL-C is >2.8 mmol/L), and ezetimibe should then

be added in case the treatment goal is not achieved (**Figure 4**). During a second follow-up, the LDL-C levels should be measured under optimised oral treatment (statin plus ezetimibe), and eligibility for PCSK9i should be assessed. In order to increase the compliance with follow-up visits and coordinate follow-up LDL-C measurements in CCS patients, it is reasonable that the first follow-up (4-6 weeks after elective PCI) is scheduled by the treating interventional cardiologist and conducted by the referring cardiologist, who should perform the guideline-endorsed routine assessment of ischaemia 1-3 months post revascularisation⁶⁰. The second LDL-C assessment could be conducted at six months latest, i.e., the time point at which decision making on dual antiplatelet therapy (DAPT) is required⁶⁰, unless it is performed at an earlier time point by the treating general practitioner. The cardiologist should be equipped to assess LDL-C *ad hoc*, in case it is not measured by the general practitioner.

CCS patients are frequently taking a statin at the time point of presentation for an elective revascularisation procedure; in case LDL-C is >1.4 mmol/L, the statin dose should be increased, the type of statin changed to a more potent statin (atorvastatin or rosuvastatin), or ezetimibe added as needed. The intensification of treatment should be specifically described in the discharge letter, along with recommendations for subsequent LDL-C controls and treatment adjustments if needed. If LDL-C is >1.4 mmol/L despite a maximal dose of either atorvastatin or rosuvastatin (or a maximally tolerated statin treatment) in combination with ezetimibe, PCSK9i are recommended as the next step²¹. While guidelines recommend PCSK9i in all patients not achieving treatment goals, national health authorities individually define the reimbursement criteria and, de facto, whether a patient can be treated or not. In some healthcare systems, the LDL-C thresholds defining reimbursement of a PCSK9i therapy are lower in case of recurrent CV events. Currently, there are no options for additional treatment if LDL-C is above the guideline-recommended goal but below the local reimbursement restrictions for PCSK9i despite maximal statin plus ezetimibe therapy. Non-pharmacologic means (mainly dietary changes) should be encouraged, as with all patients, and emerging therapies may be considered in the future in such cases.

Heterozygous FH (HeFH) is a common genetic disorder (prevalence 1/200-250 in the general population) resulting in considerably high LDL-C levels⁶¹, although only a small minority of these cases are identified and properly treated. The risk of CAD among individuals with definite or probable HeFH is estimated to be increased at least 10-fold¹⁸. Early diagnosis and appropriate treatment can substantially reduce this risk of CAD, hence physicians should be sensitised to detect and properly treat this disorder. The diagnosis of FH is usually based on clinical and laboratory findings (including patient history and family history of premature ASCVD, family history of severe hypercholesterolaemia, untreated LDL-C levels, and clinical signs of severe hypercholesterolaemia), and can be verified by DNA analysis. The probability of FH can be assessed using algorithms such as the Dutch Lipid

Clinic Network (DLCN) score; probable or definite FH is defined by a score >6 points. Typically, individuals with an untreated LDL-C >5 mmol/l have at least a possible FH. Family cascade screening should be performed if a patient is identified.

NON-OBSTRUCTIVE AND NON-CULPRIT CORONARY PLAQUES

In patients with suspected CAD referred to coronary angiography, up to 50% show normal coronary arteries or mild, non-*ischaemia*-inducing lesions. In these patients, the cardiovascular risk category is not necessarily “very high risk” but depends on other characteristics such as presence of diabetes, chronic kidney disease, presence of FH, and calculated 10-year risk for fatal CVD. The extent of non-flow-limiting coronary stenosis should be well documented, as current guidelines categorise CAD patients as “very high risk” in the presence of “characteristics known to be predictive of clinical events”²¹. This is defined as the presence of two major epicardial arteries with >50% stenosis – a consensus-based rather than an evidence-based approach.

In addition to patients without angiographic evidence of obstructive CAD, non-stenotic atherosclerotic plaques may coexist with stenotic, culprit lesions that are treated by means of PCI in patients with CAD. Natural history studies using intracoronary imaging in patients with CAD demonstrated that certain imaging-defined characteristics of angiographically non-stenotic non-culprit plaques are independently associated with future CV events. These include plaque burden >70% and VH-based thin-cap fibroatheroma (TCFA) phenotype in PROSPECT⁶², OCT-defined lipid-rich plaques with inflammatory cell infiltration in CLIMA⁶³, and near-infrared spectroscopy (NIRS)-defined lipid-rich plaques in the Lipid-Rich Plaque⁶⁴ and PROSPECT-II studies (Erlinge et al. PROSPECT II: A Prospective Natural History Study Using NIRS-IVUS Imaging in Patients with Acute Myocardial Infarction. Presented at TCT Connect 2020). In a different setting,

i.e., patients presenting with stable chest pain (of whom 10% had known previous CAD and obstructive CAD was identified in 26%), the CT substudy of SCOT-HEART showed that high-attenuation (i.e., lipid-rich) plaques were independently associated with spontaneous myocardial infarctions throughout five years of follow-up, irrespective of coronary artery stenosis⁶⁵. Collectively, these studies confirm that not only the degree of angiographic stenosis, but also plaque burden (not measurable by angiography alone) and plaque composition should be considered for risk stratification and thus for defining the LDL-C goal for a given patient. Although so far not tested in a dedicated RCT, it may become reasonable to consider such a strategy in routine practice.

Effect of LDL-C lowering therapies on coronary plaques

In addition to the evidence from clinical outcomes trials, mechanistic studies using intracoronary imaging were able to demonstrate beneficial effects of lipid-lowering medications on coronary atherosclerotic lesions (reviewed in detail elsewhere)⁶⁶ (Figure 5). Intravascular ultrasound (IVUS) can depict the atherosclerotic vessel wall beyond the “lumenography” provided by coronary angiography and is capable of quantifying atheroma volume. Studies applying serial IVUS showed that intensive statin treatment slows the progression of coronary atherosclerosis and achieves modest plaque regression with the highest doses of potent statins. In the REVERSAL study including 654 CCS patients, treatment with atorvastatin 80 mg led to prevention of plaque progression (no significant change in percent atheroma volume [PAV] by -0.4%) during an 18-month follow-up, whereas PAV increased (+2.7%) in the pravastatin arm (p=0.02)⁶⁷. ASTEROID was the first large-scale serial IVUS study to document coronary plaque regression. In 507 patients treated with the highest dose of rosuvastatin (40 mg) over 24 months, reduction of LDL-C to a mean of 60.8±20 mg/dL was associated with a median PAV reduction of 0.79%⁶⁸. The SATURN

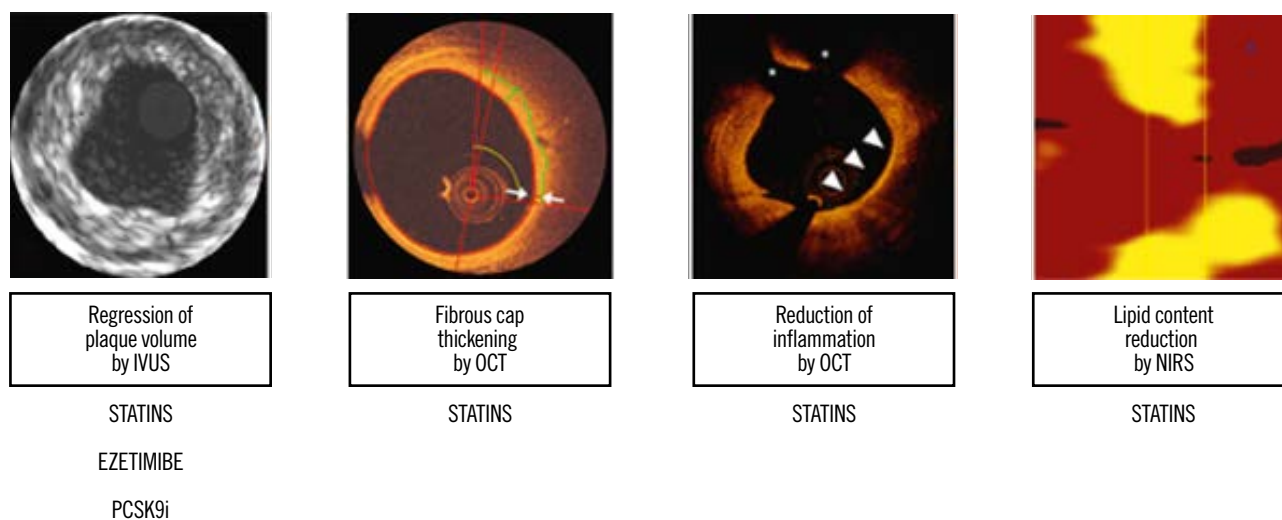


Figure 5. Summary of evidence on the effect of lipid-lowering medications on coronary atherosclerosis defined by intracoronary imaging.

study subsequently compared rosuvastatin 40 mg versus atorvastatin 80 mg and showed a similar magnitude of plaque regression with the two regimens (1.22% [1.52 to 0.90] vs 0.99% [1.19 to 0.63]; $p=0.17$)⁶⁹. In addition to data from CCS patients, the IBIS-4 study showed a comparable mean PAV regression of -0.9% ($p=0.007$) during a 13-month follow-up in the non-infarct-related arteries of acute STEMI patients treated with rosuvastatin 40 mg⁷⁰. Regarding non-statin drugs, the PRECISE IVUS study compared atorvastatin (up-titrated to reach an LDL-C of <70 mg/dL) plus ezetimibe versus atorvastatin monotherapy in 202 Japanese patients undergoing PCI. The study showed greater coronary plaque regression with the combination of statin plus ezetimibe versus statin alone after 9-12 months (change in PAV: -1.4% [-3.4% to -0.1%] vs -0.3% [-1.9% to 0.9%], respectively; $p<0.001$)⁷¹. Finally, in the GLAGOV trial, 968 patients with angiographic coronary disease were randomly allocated to receive the PCSK9i evolocumab or placebo in addition to statin for 18 months. The study showed greater PAV regression with evolocumab versus placebo (difference: -1.0% [-1.8% to -0.64%]; $p<0.001$) and a greater proportion of patients with PAV regression over time (64.3% vs 47.3%, respectively; $p<0.001$)⁷².

Other intracoronary imaging modalities can assess indices of plaque morphology and composition *in vivo* beyond atheroma volume. In a serial OCT trial, higher-dose compared with lower-dose atorvastatin (20 mg vs 5 mg) resulted in greater fibrous cap thickening and reduction of macrophage accumulation⁷³. In another study assessing changes in plaque lipid content by means of serial NIRS, intensive statin treatment (rosuvastatin 40 mg) resulted in greater reduction in the maximal lipid core burden index of obstructive coronary lesions compared with standard-of-care lipid-lowering therapy within a short-term (7-week) follow-up⁷⁴. Consistent with these RCT data, observational evidence showed an increase in fibrous cap thickness, reduction in inflammation, and regression of high-risk TCFA to presumably more stable lesion phenotypes in non-culprit lesions of patients with STEMI treated with high-dose rosuvastatin⁷⁵. The effect of the PCSK9i alirocumab on IVUS-, OCT-, and NIRS-defined plaque burden and composition is currently being investigated in the PACMAN-AMI trial (NCT03067844).

With respect to non-invasive imaging of the coronary arteries, CTA studies have assessed changes in coronary atherosclerosis in relation to statin treatment. In the PARADIGM study including 1,255 patients without a history of CAD, use of statins (in 62% of patients) was associated with slower progression of plaque volume, increase in plaque calcification, and reduction of high-risk plaque features (low-attenuation plaque, positive arterial remodeling, or spotty calcifications) at an interscan interval of ≥ 2 years⁷⁶. In another observational study including 202 patients who underwent coronary CTA for suspected CAD and were prospectively included to undergo a follow-up scan with a mean interscan period of 6.2 ± 1.4 years, statin use was associated with an increased progression of calcified coronary plaque and a reduced progression of non-calcified coronary plaque⁷⁷. These data need to be interpreted in view of inherent limitations of non-randomised investigations

but provide mechanistic evidence that is complementary to the data derived from catheter-based intracoronary imaging, overall pointing to a stabilising effect of statin treatment on coronary atheroma burden and composition. Regarding triglyceride-lowering medications, the EVAPORATE study involving 80 patients with coronary atherosclerosis ($\geq 20\%$ narrowing) and elevated triglyceride levels despite statin therapy showed significant regression of low-attenuation plaque volume with icosapent ethyl (a highly purified eicosapentaenoic acid ethyl ester) versus placebo over 18 months⁷⁸.

In summary, there is evidence that lipid-lowering therapies halt the progression of coronary atherosclerosis; statins in particular induce phenotypic changes towards more stable plaque types. As both large plaque volume and certain high-risk plaque characteristics by IVUS-VH, OCT and NIRS have been associated with impaired clinical prognosis⁶²⁻⁶⁴, it may be reasonable to consider the use of such imaging-based characteristics in order to identify patients who are more likely to derive clinical benefit from very intensive lipid-lowering treatments. Such imaging-guided, risk-tailored approaches might be most reasonable for costly treatments (e.g., clinically available PCSK9 antibodies, or other treatments that are currently under investigation), particularly in view of restraints imposed by the limited resources of national health systems across Europe. Identifying certain high-risk plaque characteristics as “gate-keepers” to potentially maximise the clinical benefit of very intensive LDL-C-lowering treatments would conceptually be in line with evidence indicating greatest risk reduction with PCSK9 antibodies in the presence of certain clinical characteristics of excessive risk (e.g., progressive CAD or polyvascular disease)^{52,53}. However, the clinical value and cost-effectiveness of such imaging-based approaches remain speculative and require investigation in properly designed studies.

Future outlook on lipid-lowering therapies

Statins are the undisputed first-line therapy, and ezetimibe and PCSK9i are currently recommended add-on treatments to lower LDL-C in patients with CAD. Several emerging therapies are under investigation, targeting either LDL-C or lipoprotein(a) [Lp(a)] levels.

Bempedoic acid is an oral small molecule that inhibits cholesterol synthesis in the liver by inhibiting an enzyme upstream of the target enzyme of statins⁷⁹. It reduces LDL-C levels by approximately 20% in monotherapy, and by about 40% in combination with ezetimibe according to phase III trials in patients with ASCVD, at very high CV risk, or with statin intolerance^{80,81}. A clinical outcomes trial is ongoing.

An alternative approach to monoclonal antibodies inhibiting the PCSK9 enzyme involves RNA interference. In phase II and III trials, the small interfering RNA (siRNA) molecule inclisiran reduced LDL-C by up to 50% in a dose-dependent manner^{82,83}. No specific serious adverse events were observed. The ORION 4 trial, with a planned mean duration of five years, is currently comparing CV outcomes with inclisiran versus placebo in 15,000 patients with prior MI or stroke (NCT03705234).

Lp(a) is an LDL particle that can cross the endothelial barrier and become retained within the arterial wall. Pro-atherogenic as well as prothrombotic effects have been attributed to increased levels of Lp(a)⁸⁴. According to Mendelian randomisation studies, Lp(a) has a causal effect on the risk of ASCVD that is proportional to the absolute change in plasma levels, and individuals with a genetic disorder twice as frequent as HeFH causing extremely elevated Lp(a) levels >180 mg/dL have an increased lifetime risk of ASCVD, similar to that of patients with HeFH⁸⁵. RNA-based therapies for selective reduction of Lp(a) concentrations are currently under investigation, and studies of an antisense oligonucleotide have shown a >90% reduction in plasma Lp(a) levels⁸⁶. A clinical outcomes trial is currently underway (NCT04023552).

Conclusion

Coronary atherosclerotic disease is a chronic, progressive disease; the risk for progression or sudden destabilisation by acute thrombotic events can be lowered with optimally controlled risk factors, lifestyle changes, and adequate therapy for secondary prevention. Myocardial revascularisation provides major benefits to properly selected patients, but suboptimal adherence to guideline-directed medical therapies adversely affects long-term clinical outcomes following an ACS or elective coronary revascularisation. Among modifiable risk factors of ASCVD, lowering of atherogenic lipids can halt the progression of coronary atherosclerosis and substantially reduce the risk of recurrent ischaemic events in patients with manifest CAD. The time point of hospitalisation for interventional treatment, either for ACS or for CCS, provides an excellent opportunity to initiate or intensify lipid-modifying therapies and establish a concrete follow-up scheme with recommended further steps. This approach should be similar to the in-hospital initiation of antiplatelet treatment following PCI, with the guideline-endorsed recommendation⁵⁷ to reassess this treatment and adjust as needed at certain time points following the acute intervention (e.g., decide on prolonged DAPT with low-dose ticagrelor, or second-line antithrombotic therapy with a low-dose NOAC). Physicians involved in the in-hospital care of patients undergoing PCI (either elective, or for an ACS), clearly including the treating interventional cardiologists, should be sensitised to measuring lipid levels, starting or modifying treatment in accordance with current guideline recommendations, and to the inclusion of concrete suggestions for subsequent controls and treatment adjustments in the interventional report and/or discharge letters (**Figure 4**). Starting intensive lipid-lowering treatment in the acute, in-hospital setting has major advantages for patients, as it is linked to an early clinical benefit (reduction of recurrent events in the very high-risk, early post-ACS period) and is more likely to increase subsequent, long-term adherence to treatment.

Conflict of interest statement

K.C. Koskinas reports speaker/consultant fees from Amgen, Sanofi, and Daiichi Sankyo. L. Räber receives research grants to the institution from Abbott, Biotronik, Boston Scientific, Medis,

Sanofi, and Regeneron, and speaker or consultant honoraria from Abbott, Amgen, AstraZeneca, Canon, Occlutech, Sanofi, and Vifor. The other author has no conflicts of interest to declare.

References

1. Neumann FJ, Sousa-Uva M, Ahlsson A, Alfonso F, Banning AP, Benedetto U, Byrne RA, Collet JP, Falk V, Head SJ, Juni P, Kastrati A, Koller A, Kristensen SD, Niebauer J, Richter DJ, Seferovic PM, Sibbing D, Stefanini GG, Windecker S, Yadav R, Zembala MO; ESC Scientific Document Group. 2018 ESC/EACTS Guidelines on myocardial revascularization. *Eur Heart J*. 2019; 40:87-165.
2. Jernberg T, Hasvold P, Henriksson M, Hjelm H, Thuresson M, Janzon M. Cardiovascular risk in post-myocardial infarction patients: nationwide real world data demonstrate the importance of a long-term perspective. *Eur Heart J*. 2015;36:1163-70.
3. Piepoli MF, Corrà U, Dendale P, Frederix I, Prescott E, Schmid JP, Cupples M, Deaton C, Doherty P, Giannuzzi P, Graham I, Hansen TB, Jennings C, Landmesser U, Marques-Vidal P, Vrints C, Walker D, Bueno H, Fitzsimons D, Pelliccia A. Challenges in secondary prevention after acute myocardial infarction: A call for action. *Eur J Prev Cardiol*. 2016;23:1994-2006.
4. Björklund E, Nielsen SJ, Hansson EC, Karlsson M, Wallinder A, Martinsson A, Tygesen H, Romlin BS, Malm CJ, Pivodic A, Jeppsson A. Secondary prevention medications after coronary artery bypass grafting and long-term survival: a population-based longitudinal study from the SWEDEHEART registry. *Eur Heart J*. 2020;41:1653-61.
5. Newman JD, Alexander KP, Gu X, O'Brien SM, Boden WE, Govindan SC, Senior R, Moorthy N, Rezende PC, Demkow M, Lopez-Sendon JL, Bockeria O, Pandit N, Gosselin G, Stone PH, Spertus JA, Stone GW, Fleg JL, Hochman JS, Maron DJ. Baseline Predictors of Low-Density Lipoprotein Cholesterol and Systolic Blood Pressure Goal Attainment After 1 Year in the ISCHEMIA Trial. *Circ Cardiovasc Qual Outcomes*. 2019;12:e006002.
6. Iqbal J, Zhang YJ, Holmes DR, Morice MC, Mack MJ, Kappetein AP, Feldman T, Stahle E, Escaned J, Banning AP, Gunn JP, Colombo A, Steyerberg EW, Mohr FW, Serruys PW. Optimal medical therapy improves clinical outcomes in patients undergoing revascularization with percutaneous coronary intervention or coronary artery bypass grafting: insights from the Synergy Between Percutaneous Coronary Intervention with TAXUS and Cardiac Surgery (SYNTAX) trial at the 5-year follow-up. *Circulation*. 2015;131:1269-77.
7. Ference BA, Ginsberg HN, Graham I, Ray KK, Packard CJ, Bruckert E, Hegele RA, Krauss RM, Raal FJ, Schunkert H, Watts GF, Borén J, Fazio S, Horton JD, Masana L, Nicholls SJ, Nordestgaard BG, van de Sluis B, Taskinen MR, Tokgözoğlu L, Landmesser U, Laufs U, Wiklund O, Stock JK, Chapman MJ, Catapano AL. Low-density lipoproteins cause atherosclerotic cardiovascular disease. 1. Evidence from genetic, epidemiologic, and clinical studies. A consensus statement from the European Atherosclerosis Society Consensus Panel. *Eur Heart J*. 2017;38:2459-72.
8. Borén J, Chapman MJ, Krauss RM, Packard CJ, Bentzon JF, Binder CJ, Daemen MJ, Demer LL, Hegele RA, Nicholls SJ, Nordestgaard BG, Watts GF, Bruckert E, Fazio S, Ference BA, Graham I, Horton JD, Landmesser U, Laufs U, Masana L, Pasterkamp G, Raal FJ, Ray KK, Schunkert H, Taskinen MR, van de Sluis B, Wiklund O, Tokgozoglul, Catapano AL, Ginsberg HN. Low-density lipoproteins cause atherosclerotic cardiovascular disease: pathophysiological, genetic, and therapeutic insights: a consensus statement from the European Atherosclerosis Society Consensus Panel. *Eur Heart J*. 2020;41:2313-30.
9. Cholesterol Treatment Trialists' (CTT) Collaboration, Baigent C, Blackwell L, Emberson J, Holland LE, Reith C, Bhalra N, Peto R, Barnes EH, Keech A, Simes J, Collins R. Efficacy and safety of more intensive lowering of LDL cholesterol: a meta-analysis of data from 170,000 participants in 26 randomised trials. *Lancet*. 2010;376:1670-81.

10. Silverman MG, Ference BA, Im K, Wiviott SD, Giugliano RP, Grundy SM, Braunwald E, Sabatine MS. Association Between Lowering LDL-C and Cardiovascular Risk Reduction Among Different Therapeutic Interventions: A Systematic Review and Meta-Analysis. *JAMA*. 2016;316:1289-97.
11. Koskinas KC, Siontis GCM, Piccolo R, Mavridis D, Räber L, Mach F, Windecker S. Effect of statins and non-statin LDL-lowering medications on cardiovascular outcomes in secondary prevention: a meta-analysis of randomized trials. *Eur Heart J*. 2018;39:1172-80.
12. Schwartz GG, Olsson AG, Ezekowitz MD, Ganz P, Oliver MF, Waters D, Zeiher A, Chaitman BR, Leslie S, Stern T; Myocardial Ischemia Reduction with Aggressive Cholesterol Lowering (MIRACL) Study Investigators. Effects of atorvastatin on early recurrent ischemic events in acute coronary syndromes: the MIRACL study: a randomized controlled trial. *JAMA*. 2001;285:1711-8.
13. Cannon CP, Braunwald E, McCabe CH, Rader DJ, Rouleau JL, Belder R, Joyal SV, Hill KA, Pfeffer MA, Skene AM; Pravastatin or Atorvastatin Evaluation and Infection Therapy-Thrombolysis in Myocardial Infarction 22 Investigators. Intensive versus moderate lipid lowering with statins after acute coronary syndromes. *N Engl J Med*. 2004;350:1495-504.
14. Ray KK, Cannon CP, McCabe CH, Cairns R, Tonkin AM, Sacks FM, Jackson G, Braunwald E; PROVE IT-TIMI 22 Investigators. Early and late benefits of high-dose atorvastatin in patients with acute coronary syndromes: results from the PROVE IT-TIMI 22 trial. *J Am Coll Cardiol*. 2005;46:1405-10.
15. De Backer G, Jankowski P, Kotseva K, Mirrahimov E, Reiner Ž, Rydén L, Tokgözoğlu L, Wood D, De Bacquer D; EUROASPIRE V collaborators; Writing Committee; Scientific Steering/ Executive Committee; Coordinating centre; Diabetes centre; Data management centre; Statistical analysis centre; Central laboratory; Study centres, organisations, investigators and other research personnel (National Co-ordinators in each country are indicated by asterisk. Management of dyslipidaemia in patients with coronary heart disease: Results from the ESC-EORP EUROASPIRE V survey in 27 countries. *Atherosclerosis*. 2019;285:135-46.
16. Danchin N, Almahmeed W, Al-Rasadi K, Azuri J, Berrah A, Cuneo CA, Karpov Y, Kaul U, Kayıkcioglu M, Mitchenko O, Ruiz AJ, Aguilar Salinas CA, Santos RD, Mercier F, Blom D; ICLPS Investigators. Achievement of low-density lipoprotein cholesterol goals in 18 countries outside western Europe: The International Cholesterol management Practice Study (ICLPS). *Eur J Prev Cardiol*. 2018;25:1087-94.
17. Wiegman A, Gidding SS, Watts GF, Chapman MJ, Ginsberg HN, Cuchel M, Ose L, Averna M, Boileau C, Borén J, Bruckert E, Catapano AL, Defesche JC, Descamps OS, Hegele RA, Hovingh GK, Humphries SE, Kovanen PT, Kuivenhoven JA, Masana L, Nordestgaard BG, Pajukanta P, Parhofer KG, Raal FJ, Ray KK, Santos RD, Stalenhoef AF, Steinhagen-Thiessen E, Stroes ES, Taskinen MR, Tybjærg-Hansen A, Wiklund O; European Atherosclerosis Society Consensus Panel. Familial hypercholesterolaemia in children and adolescents: gaining decades of life by optimizing detection and treatment. *Eur Heart J*. 2015;36:2425-37.
18. Nordestgaard BG, Chapman MJ, Humphries SE, Ginsberg HN, Masana L, Descamps OS, Wiklund O, Hegele RA, Raal FJ, Defesche JC, Wiegman A, Santos RD, Watts GF, Parhofer KG, Hovingh GK, Kovanen PT, Boileau C, Averna M, Borén J, Bruckert E, Catapano AL, Kuivenhoven JA, Pajukanta P, Ray K, Stalenhoef AF, Stroes E, Taskinen MR, Tybjærg-Hansen A; European Atherosclerosis Society Consensus Panel. Familial hypercholesterolaemia is underdiagnosed and undertreated in the general population: guidance for clinicians to prevent coronary heart disease: consensus statement of the European Atherosclerosis Society. *Eur Heart J*. 2013;34:3478-90a.
19. Cohen JC, Boerwinkle E, Mosley TH Jr, Hobbs HH. Sequence variations in PCSK9, low LDL, and protection against coronary heart disease. *N Engl J Med*. 2006;354:1264-72.
20. Kannel WB, Castelli WP, Gordon T, McNamara PM. Serum cholesterol, lipoproteins, and the risk of coronary heart disease. The Framingham study. *Ann Intern Med*. 1971;74:1-12.
21. Mach F, Baigent C, Catapano AL, Koskinas KC, Casula M, Badimon L, Chapman MJ, De Backer GG, Delgado V, Ference BA, Graham IM, Halliday A, Landmesser U, Mihaylova B, Pedersen TR, Riccardi G, Richter DJ, Sabatine MS, Taskinen MR, Tokgozoglul L, Wiklund O. 2019 ESC/EAS Guidelines for the management of dyslipidaemias: lipid modification to reduce cardiovascular risk. *Eur Heart J*. 2020;41:111-88.
22. Taniwaki M, Radu MD, Zaugg S, Amabile N, Garcia-Garcia HM, Yamaji K, Jørgensen E, Kelbæk H, Pilgrim T, Caussin C, Zanchin T, Veugeois A, Abildgaard U, Juni P, Cook S, Koskinas KC, Windecker S, Räber L. Mechanisms of Very Late Drug-Eluting Stent Thrombosis Assessed by Optical Coherence Tomography. *Circulation*. 2016;133:650-60.
23. Taniwaki M, Windecker S, Zaugg S, Stefanini GG, Baumgartner S, Zanchin T, Wenaweser P, Meier B, Juni P, Räber L. The association between in-stent neoatherosclerosis and native coronary artery disease progression: a long-term angiographic and optical coherence tomography cohort study. *Eur Heart J*. 2015;36:2167-76.
24. Kuroda K, Otake H, Shinohara M, Kuroda M, Tsuda S, Toba T, Nagano Y, Toh R, Ishida T, Shinke T, Hirata KI. Effect of rosuvastatin and eicosapentaenoic acid on neoatherosclerosis: the LINK-IT Trial. *EuroIntervention*. 2019;15:e1099-106.
25. Patti G, Cannon CP, Murphy SA, Mega S, Pasceri V, Briguori C, Colombo A, Yun KH, Jeong MH, Kim JS, Choi D, Bozbas H, Kinoshita M, Fukuda K, Jia XW, Hara H, Cay S, Di Sciascio G. Clinical benefit of statin pretreatment in patients undergoing percutaneous coronary intervention: a collaborative patient-level meta-analysis of 13 randomized studies. *Circulation*. 2011;123:1622-32.
26. Gandhi S, Mosleh W, Abdel-Qadir H, Farkouh ME. Statins and contrast-induced acute kidney injury with coronary angiography. *Am J Med*. 2014;127:987-1000.
27. Berwanger O, Santucci EV, de Barros E Silva PGM, Jesuino IA, Damiani LP, Barbosa LM, Santos RHN, Laranjeira LN, Eglydio FM, Borges de Oliveira JA, Dall Orto FTC, Beraldo de Andrade P, Bienert IRC, Bosso CE, Mangione JA, Polanczyk CA, Sousa AGMR, Kalil RAK, Santos LM, Sposito AC, Rech RL, Sousa ACS, Baldissera F, Nascimento BR, Giraldez RRCV, Cavalcanti AB, Pereira SB, Mattos LA, Armaganijan LV, Guimarães HP, Sousa JEMR, Alexander JH, Granger CB, Lopes RD; SECURE-PCI Investigators. Effect of Loading Dose of Atorvastatin Prior to Planned Percutaneous Coronary Intervention on Major Adverse Cardiovascular Events in Acute Coronary Syndrome: The SECURE-PCI Randomized Clinical Trial. *JAMA*. 2018;319:1331-40.
28. Mach F, Ray KK, Wiklund O, Corsini A, Catapano AL, Bruckert E, De Backer G, Hegele RA, Hovingh GK, Jacobson TA, Krauss RM, Laufs U, Leiter LA, März W, Nordestgaard BG, Raal FJ, Roden M, Santos RD, Stein EA, Stroes ES, Thompson PD, Tokgozoglul L, Vladutiu GD, Gencer B, Stock JK, Ginsberg HN, Chapman MJ; European Atherosclerosis Society Consensus Panel. Adverse effects of statin therapy: perception vs. the evidence - focus on glucose homeostasis, cognitive, renal and hepatic function, haemorrhagic stroke and cataract. *Eur Heart J*. 2018;39:2526-39.
29. Bruckert E, Hayem G, Dejager S, Yau C, Begaud B. Mild to moderate muscular symptoms with high-dosage statin therapy in hyperlipidemic patients—the PRIMO study. *Cardiovasc Drugs Ther*. 2005;19:403-14.
30. Davidson MH, Clark JA, Glass LM, Kanumalla A. Statin safety: an appraisal from the adverse event reporting system. *Am J Cardiol*. 2006;97:32C-43C.
31. Collins R, Reith C, Emberson J, Armitage J, Baigent C, Blackwell L, Blumenthal R, Danesh J, Smith GD, DeMets D, Evans S, Law M, MacMahon S, Martin S, Neal B, Poulter N, Preiss D, Ridker P, Roberts I, Rodgers A, Sandercock P, Schulz K, Sever P, Simes J, Smeeth L, Wald N, Yusuf S, Peto R. Interpretation of the evidence for the efficacy and safety of statin therapy. *Lancet*. 2016;388:2532-61.

32. Hopewell JC, Offer A, Haynes R, Bowman L, Li J, Chen F, Bulbulia R, Lathrop M, Baigent C, Landray MJ, Collins R, Armitage J, Parish S. Independent risk factors for simvastatin-related myopathy and relevance to different types of muscle symptom. *Eur Heart J*. 2020;41:3336-42.
33. Gupta A, Thompson D, Whitehouse A, Collier T, Dahlof B, Poulter N, Collins R, Sever P; ASCOT Investigators. Adverse events associated with unblinded, but not with blinded, statin therapy in the Anglo-Scandinavian Cardiac Outcomes Trial-Lipid-Lowering Arm (ASCOT-LLA): a randomised double-blind placebo-controlled trial and its non-randomised non-blind extension phase. *Lancet*. 2017;389:2473-81.
34. Wood FA, Howard JP, Finegold JA, Nowbar AN, Thompson DM, Arnold AD, Rajkumar CA, Connolly S, Cegla J, Stride C, Sever P, Norton C, Thom SAM, Shun-Shin MJ, Francis DP. N-of-1 Trial of a Statin, Placebo, or No Treatment to Assess Side Effects. *N Engl J Med*. 2020;383:2182-4.
35. Law M, Rudnicka AR. Statin safety: a systematic review. *Am J Cardiol*. 2006;97:52C-60C.
36. Sattar N, Preiss D, Murray HM, Welsh P, Buckley BM, de Craen AJ, Seshasai SR, McMurray JJ, Freeman DJ, Jukema JW, Macfarlane PW, Packard CJ, Stott DJ, Westendorp RG, Shepherd J, Davis BR, Pressel SL, Marchioli R, Marfisi RM, Maggioni AP, Tavazzi L, Tognoni G, Kjekshus J, Pedersen TR, Cook TJ, Gotto AM, Clearfield MB, Downs JR, Nakamura H, Ohashi Y, Mizuno K, Ray KK, Ford I. Statins and risk of incident diabetes: a collaborative meta-analysis of randomized statin trials. *Lancet*. 2010;375:735-42.
37. Preiss D, Seshasai SR, Welsh P, Murphy SA, Ho JE, Waters DD, DeMicco DA, Barter P, Cannon CP, Sabatine MS, Braunwald E, Kastelein JJ, de Lemos JA, Blazing MA, Pedersen TR, Tikkanen MJ, Sattar N, Ray KK. Risk of incident diabetes with intensive-dose compared with moderate-dose statin therapy: a meta-analysis. *JAMA*. 2011;305:2556-64.
38. McKinney JS, Kostis WJ. Statin therapy and the risk of intracerebral hemorrhage: a meta-analysis of 31 randomized controlled trials. *Stroke*. 2012;43:2149-56.
39. Cholesterol Treatment Trialists (CTT) Collaborators, Mihaylova B, Emberson J, Blackwell L, Keech A, Simes J, Barnes EH, Voysey M, Gray A, Collins R, Baigent C. The effects of lowering LDL cholesterol with statin therapy in people at low risk of vascular disease: meta-analysis of individual data from 27 randomised trials. *Lancet*. 2012;380:581-90.
40. Chalasani N, Aljadhey H, Kesterson J, Murray MD, Hall SD. Patients with elevated liver enzymes are not at higher risk for statin hepatotoxicity. *Gastroenterology*. 2004;126:1287-92.
41. Pandor A, Ara RM, Tumur I, Wilkinson AJ, Paisley S, Duenas A, Durrington PN, Chilcott J. Ezetimibe monotherapy for cholesterol lowering in 2,722 people: systematic review and meta-analysis of randomized controlled trials. *J Intern Med*. 2009;265:568-80.
42. Morrone D, Weintraub WS, Toth PP, Hanson ME, Lowe RS, Lin J, Shah AK, Tereshakovec AM. Lipid-altering efficacy of ezetimibe plus statin and statin monotherapy and identification of factors associated with treatment response: a pooled analysis of over 21,000 subjects from 27 clinical trials. *Atherosclerosis*. 2012;223:251-61.
43. Cannon CP, Blazing MA, Giugliano RP, McCagg A, White JA, Theroux P, Darius H, Lewis BS, Ophuis TO, Jukema JW, De Ferrari GM, Ruzyllo W, De Lucca P, Im K, Bohula EA, Reist C, Wiviott SD, Tereshakovec AM, Musliner TA, Braunwald E, Califf RM; IMPROVE-IT Investigators. Ezetimibe Added to Statin Therapy after Acute Coronary Syndromes. *N Engl J Med*. 2015;372:2387-97.
44. Guedeney P, Giustino G, Sorrentino S, Claessen BE, Camaj A, Kalkman DN, Vogel B, Sartori S, De Rosa S, Baber U, Indolfi C, Montalescot G, Dangas GD, Rosenson RS, Pocock SJ, Mehran R. Efficacy and safety of alirocumab and evolocumab: a systematic review and meta-analysis of randomized controlled trials. *Eur Heart J*. 2019 Jul 3. [Epub ahead of print].
45. Robinson JG, Farnier M, Krempf M, Bergeron J, Luc G, Averna M, Stroes ES, Langslet G, Raal FJ, El Shahawy M, Koren MJ, Lepor NE, Lorenzato C, Pordy R, Chaudhari U, Kastelein JJ; ODYSSEY LONG TERM Investigators. Efficacy and safety of alirocumab in reducing lipids and cardiovascular events. *N Engl J Med*. 2015;372:1489-99.
46. Sabatine MS, Giugliano RP, Wiviott SD, Raal FJ, Blom DJ, Robinson J, Ballantyne CM, Somaratne R, Legg J, Wasserman SM, Scott R, Koren MJ, Stein EA; Open-Label Study of Long-Term Evaluation against LDL Cholesterol (OSLER) Investigators. Efficacy and safety of evolocumab in reducing lipids and cardiovascular events. *N Engl J Med*. 2015;372:1500-9.
47. Sabatine MS, Giugliano RP, Keech AC, Honarpour N, Wiviott SD, Murphy SA, Kuder JF, Wang H, Liu T, Wasserman SM, Sever PS, Pedersen TR; FOURIER Steering Committee and Investigators. Evolocumab and Clinical Outcomes in Patients with Cardiovascular Disease. *N Engl J Med*. 2017;376:1713-22.
48. Schwartz GG, Steg PG, Szarek M, Bhatt DL, Bittner VA, Diaz R, Edelberg JM, Goodman SG, Hanotin C, Harrington RA, Jukema JW, Lecorps G, Mahaffey KW, Moryusef A, Pordy R, Quintero K, Roe MT, Sasiela WJ, Tamby JF, Tricoci P, White HD, Zeiher AM; ODYSSEY OUTCOMES Committees and Investigators. Alirocumab and Cardiovascular Outcomes after Acute Coronary Syndrome. *N Engl J Med*. 2018;379:2097-107.
49. Koskinas KC, Windecker S, Pedrazzini G, Mueller C, Cook S, Matter CM, Muller O, Häner J, Gencer B, Crljenica C, Amini P, Deckarm O, Iglesias JF, Räber L, Heg D, Mach F. Evolocumab for Early Reduction of LDL Cholesterol Levels in Patients With Acute Coronary Syndromes (EVOPACS). *J Am Coll Cardiol*. 2019;74:2452-62.
50. Bhatt DL, Steg PG, Miller M, Brinton EA, Jacobson TA, Ketchum SB, Doyle RT Jr, Juliano RA, Jiao L, Granowitz C, Tardif JC, Ballantyne CM; REDUCE-IT Investigators. Cardiovascular Risk Reduction with Icosapent Ethyl for Hypertriglyceridemia. *N Engl J Med*. 2019;380:11-22.
51. Nicholls SJ, Lincoff AM, Garcia M, Bash D, Ballantyne CM, Barter PJ, Davidson MH, Kastelein JJP, Koenig W, McGuire DK, Mozaffarian D, Ridker PM, Ray KK, Katona BG, Himmelmann A, Loss LE, Rensfeldt M, Lundström T, Agrawal R, Menon V, Wolski K, Nissen SE. Effect of High-Dose Omega-3 Fatty Acids vs Corn Oil on Major Adverse Cardiovascular Events in Patients at High Cardiovascular Risk: The STRENGTH Randomized Clinical Trial. *JAMA*. 2020;324:2268-80.
52. Sabatine MS, De Ferrari GM, Giugliano RP, Huber K, Lewis BS, Ferreira J, Kuder JF, Murphy SA, Wiviott SD, Kurtz CE, Honarpour N, Keech AC, Sever PS, Pedersen TR. Clinical Benefit of Evolocumab by Severity and Extent of Coronary Artery Disease: Analysis From FOURIER. *Circulation*. 2018;138:756-66.
53. Jukema JW, Szarek M, Zijlstra LE, de Silva HA, Bhatt DL, Bittner VA, Diaz R, Edelberg JM, Goodman SG, Hanotin C, Harrington RA, Karpov Y, Moryusef A, Pordy R, Prieto JC, Roe MT, White HD, Zeiher AM, Schwartz GG, Steg PG; ODYSSEY OUTCOMES Committees and Investigators. Alirocumab in Patients With Polyvascular Disease and Recent Acute Coronary Syndrome: ODYSSEY OUTCOMES Trial. *J Am Coll Cardiol*. 2019;74:1167-76.
54. Ibanez B, James S, Agewall S, Antunes MJ, Bucciarelli-Ducci C, Bueno H, Caforio ALP, Crea F, Goudevenos JA, Halvorsen S, Hindricks G, Kasrati A, Lenzen MJ, Prescott E, Roffi M, Valgimigli M, Varenhorst C, Vranckx P, Widimský P; ESC Scientific Document Group. 2017 ESC Guidelines for the management of acute myocardial infarction in patients presenting with ST-segment elevation: The Task Force for the management of acute myocardial infarction in patients presenting with ST-segment elevation of the European Society of Cardiology (ESC). *Eur Heart J*. 2018;39:119-77.
55. Dutta P, Courties G, Wei Y, Leuschner F, Gorbato R, Robbins CS, Iwamoto Y, Thompson B, Carlson AL, Heidt T, Majmudar MD, Lasitschka F, Etzrodt M, Waterman P, Waring MT, Chicoine AT, van der Laan AM, Niessen HW, Piek JJ, Rubin BB, Butany J, Stone JR, Katus HA, Murphy SA, Morrow DA, Sabatine MS, Vinegoni C, Moskowitz MA, Pittet MJ, Libby P,

- Lin CP, Swirski FK, Weissleder R, Nahrendorf M. Myocardial infarction accelerates atherosclerosis. *Nature*. 2012;487:325-9.
56. Hong MK, Mintz GS, Lee CW, Kim YH, Lee SW, Song JM, Han KH, Kang DH, Song JK, Kim JJ, Park SW, Park SJ. Comparison of coronary plaque rupture between stable angina and acute myocardial infarction: a three-vessel intravascular ultrasound study in 235 patients. *Circulation*. 2004;110:928-33.
57. Pitt B, Loscalzo J, Ycas J, Raichlen JS. Lipid levels after acute coronary syndromes. *J Am Coll Cardiol*. 2008;51:1440-5.
58. Koskinas KC, Gencer B, Nanchen D, Branca M, Carballo D, Klingenberg R, Blum MR, Carballo S, Muller O, Matter CM, Lüscher TF, Rodondi N, Heg D, Wilhelm M, Räber L, Mach F, Windecker S. Eligibility for PCSK9 inhibitors based on the 2019 ESC/EAS and 2018 ACC/AHA guidelines. *Eur J Prev Cardiol*. 2020 Jul 20. [Epub ahead of print].
59. Cholesterol Treatment Trialists Collaboration. Efficacy and safety of statin therapy in older people: a meta-analysis of individual participant data from 28 randomised controlled trials. *Lancet*. 2019;393:407-15.
60. Knuuti J, Wijns W, Saraste A, Capodanno D, Barbato E, Funck-Brentano C, Prescott E, Storey RF, Deaton C, Cuisset T, Agewall S, Dickstein K, Edvardsen T, Escaned J, Gersh BJ, Svtil P, Gilard M, Hasdai D, Hatala R, Mahfoud F, Masip J, Muneretto C, Valgimigli M, Achenbach S, Bax JJ; ESC Scientific Document Group. 2019 ESC Guidelines for the diagnosis and management of chronic coronary syndromes. *Eur Heart J*. 2020;41:407-77.
61. de Ferranti SD, Rodday AM, Mendelson MM, Wong JB, Leslie LK, Sheldrick RC. Prevalence of familial hypercholesterolemia in the 1999 to 2012 United States National Health and Nutrition Examination Surveys (NHANES). *Circulation*. 2016;133:1067-72.
62. Stone GW, Maehara A, Lansky AJ, de Bruyne B, Cristea E, Mintz GS, Mehran R, McPherson J, Farhat N, Marso SP, Parise H, Templin B, White R, Zhang Z, Serruys PW; PROSPECT Investigators. A prospective natural-history study of coronary atherosclerosis. *N Engl J Med*. 2011;364:226-35.
63. Prati F, Romagnoli E, Gatto L, La Manna A, Burzotta F, Ozaki Y, Marco V, Boi A, Fineschi M, Fabbiochi F, Taglieri N, Niccoli G, Trani C, Versaci F, Calligaris G, Ruscica G, Di Giorgio A, Vergallo R, Albertucci M, Biondi-Zoccai G, Tamburino C, Crea F, Alfonso F, Arbustini E. Relationship between coronary plaque morphology of the left anterior descending artery and 12 months clinical outcome: the CLIMA study. *Eur Heart J*. 2020;41:383-91.
64. Waksman R, Di Mario C, Torguson R, Ali ZA, Singh V, Skinner WH, Artis AK, Ten Cate T, Powers E, Kim C, Regar E, Wong SC, Lewis S, Wykrzykowska J, Dube S, Kazziha S, van der Ent M, Shah P, Craig PE, Zou Q, Kolm P, Brewer HB, Garcia-Garcia HM; LRP Investigators. Identification of patients and plaques vulnerable to future coronary events with near-infrared spectroscopy intravascular ultrasound imaging: a prospective, cohort study. *Lancet*. 2019;394:1629-37.
65. Williams MC, Kwiecinski J, Doris M, McElhinney P, D'Souza MS, Cadet S, Adamson PD, Moss AJ, Alam S, Hunter A, Shah ASV, Mills NL, Pawade T, Wang C, Weir McCall J, Bonnici-Mallia M, Murrills C, Roditi G, van Beek EJR, Shaw LJ, Nicol ED, Berman DS, Slomka PJ, Newby DE, Dweck MR, Dey D. Low-Attenuation Noncalcified Plaque on Coronary Computed Tomography Angiography Predicts Myocardial Infarction: Results From the Multicenter SCOT-HEART Trial (Scottish Computed Tomography of the HEART). *Circulation*. 2020;141:1452-62.
66. Koskinas KC, Ughi GJ, Windecker S, Tearney GJ, Räber L. Intracoronary imaging of coronary atherosclerosis: validation for diagnosis, prognosis and treatment. *Eur Heart J*. 2016;37:524-35a.
67. Nissen SE, Tuzcu EM, Schoenhagen P, Brown BG, Ganz P, Vogel RA, Crowe T, Howard G, Cooper CJ, Brodie B, Grines CL, DeMaria AN; REVERSAL Investigators. Effect of intensive compared with moderate lipid-lowering therapy on progression of coronary atherosclerosis: a randomized controlled trial. *JAMA*. 2004;291:1071-80.
68. Nissen SE, Nicholls SJ, Sipahi I, Libby P, Raichlen JS, Ballantyne CM, Davignon J, Erbel R, Fruchart JC, Tardif JC, Schoenhagen P, Crowe T, Cain V, Wolski K, Goormastic M, Tuzcu EM; ASTEROID Investigators. Effect of very high-intensity statin therapy on regression of coronary atherosclerosis: the ASTEROID trial. *JAMA*. 2006;295:1556-65.
69. Nicholls SJ, Ballantyne CM, Barter PJ, Chapman MJ, Erbel RM, Libby P, Raichlen JS, Uno K, Borgman M, Wolski K, Nissen SE. Effect of two intensive statin regimens on progression of coronary disease. *N Engl J Med*. 2011;365:2078-87.
70. Räber L, Taniwaki M, Zaugg S, Kelbæk H, Roffi M, Holmvang L, Noble S, Pedrazzini G, Moschovitis A, Lüscher TF, Matter CM, Serruys PW, Jüni P, Garcia-Garcia HM, Windecker S; IBIS 4 (Integrated Biomarkers and Imaging Study-4) Trial Investigators (NCT00962416). Effect of high-intensity statin therapy on atherosclerosis in non-infarct-related coronary arteries (IBIS-4): a serial intravascular ultrasonography study. *Eur Heart J*. 2015;36:490-500.
71. Tsujita K, Sugiyama S, Sumida H, Shimomura H, Yamashita T, Yamana K, Komura N, Sakamoto K, Oka H, Nakao K, Nakamura S, Ishihara M, Matsui K, Sakaino N, Nakamura N, Yamamoto N, Koide S, Matsumura T, Fujimoto K, Tsunoda R, Morikami Y, Matsuyama K, Oshima S, Kaikita K, Hokimoto S, Ogawa H; PRECISE-IVUS Investigators. Impact of Dual Lipid-Lowering Strategy With Ezetimibe and Atorvastatin on Coronary Plaque Regression in Patients With Percutaneous Coronary Intervention: The Multicenter Randomized Controlled PRECISE-IVUS Trial. *J Am Coll Cardiol*. 2015;66:495-507.
72. Nicholls SJ, Puri R, Anderson T, Ballantyne CM, Cho L, Kastelein JJ, Koenig W, Somaratne R, Kassahun H, Yang J, Wasserman SM, Scott R, Ungi I, Podolec J, Ophuis AO, Cornel JH, Borgman M, Brennan DM, Nissen SE. Effect of Evolocumab on Progression of Coronary Disease in Statin-Treated Patients: The GLAGOV Randomized Clinical Trial. *JAMA*. 2016;316:2373-84.
73. Komukai K, Kubo T, Kitabata H, Matsuo Y, Ozaki Y, Takarada S, Okumoto Y, Shiono Y, Orii M, Shimamura K, Ueno S, Yamano T, Tanimoto T, Ino Y, Yamaguchi T, Kumiko H, Tanaka A, Imanishi T, Akagi H, Akasaka T. Effect of atorvastatin therapy on fibrous cap thickness in coronary atherosclerotic plaque as assessed by optical coherence tomography: the EASY-FIT study. *J Am Coll Cardiol*. 2014;64:2207-17.
74. Kini AS, Baber U, Kovacic JC, Limaye A, Ali ZA, Sweeney J, Maehara A, Mehran R, Dangas G, Mintz GS, Fuster V, Narula J, Sharma SK, Moreno PR. Changes in plaque lipid content after short-term intensive versus standard statin therapy: the YELLOW trial (reduction in yellow plaque by aggressive lipid-lowering therapy). *J Am Coll Cardiol*. 2013;62:21-29.
75. Räber L, Koskinas KC, Yamaji K, Taniwaki M, Roffi M, Holmvang L, Garcia Garcia HM, Zanchin T, Maldonado R, Moschovitis A, Pedrazzini G, Zaugg S, Dijkstra J, Matter CM, Serruys PW, Lüscher TF, Kelbæk H, Karagiannis A, Radu MD, Windecker S. Changes in Coronary Plaque Composition in Patients With Acute Myocardial Infarction Treated With High-Intensity Statin Therapy (IBIS-4): A Serial Optical Coherence Tomography Study. *JACC Cardiovasc Imaging*. 2019;12:1518-28.
76. Lee SE, Chang HJ, Sung JM, Park HB, Heo R, Rizvi A, Lin FY, Kumar A, Hadamitzky M, Kim YJ, Conte E, Andreini D, Pontone G, Budoff MJ, Gottlieb I, Lee BK, Chun EJ, Cademartiri F, Maffei E, Marques H, Leipsic JA, Shin S, Choi JH, Chinnaiyan K, Raff G, Virmani R, Samady H, Stone PH, Berman DS, Narula J, Shaw LJ, Bax JJ, Min JK. Effects of Statins on Coronary Atherosclerotic Plaques: The PARADIGM Study. *JACC Cardiovasc Imaging*. 2018;11:1475-84.
77. Smit JM, van Rosendaal AR, El Mahdiu M, Neglia D, Knuuti J, Saraste A, Buechel RR, Teresinska A, Pizzi MN, Roque A, Poddighe R, Mertens BJ, Caselli C, Rocchiccioli S, Parodi O, Pelosi G, Scholte AJ. Impact of Clinical Characteristics and Statins on Coronary Plaque Progression by Serial Computed Tomography Angiography. *Circ Cardiovasc Imaging*. 2020;13:e009750.

78. Budoff MJ, Bhatt DL, Kunninger A, Lakshmanan S, Muhlestein JB, Le VT, May HT, Shaikh K, Shekar C, Roy SK, Tayek J, Nelson JR. Effect of icosapent ethyl on progression of coronary atherosclerosis in patients with elevated triglycerides on statin therapy: final results of the EVAPORATE trial. *Eur Heart J*. 2020;41:3925-32.
79. Saeed A, Ballantyne CM. Bempedoic acid (ETC-1002): A Current Review. *Cardiol Clin*. 2018;36:257-64.
80. Ray KK, Bays HE, Catapano AL, Lalwani ND, Bloedon LT, Sterling LR, Robinson PL, Ballantyne CM; CLEAR Harmony Trial. Safety and Efficacy of Bempedoic Acid to Reduce LDL Cholesterol. *N Engl J Med*. 2019;380:1022-32.
81. Goldberg AC, Leiter LA, Stroes ESG, Baum SJ, Hanselman JC, Bloedon LT, Lalwani ND, Patel PM, Zhao X, Duell PB. Effect of Bempedoic Acid vs Placebo Added to Maximally Tolerated Statins on Low-Density Lipoprotein Cholesterol in Patients at High Risk for Cardiovascular Disease: The CLEAR Wisdom Randomized Clinical Trial. *JAMA*. 2019;322:1780-8.
82. Ray KK, Landmesser U, Leiter LA, Kallend D, Dufour R, Karakas M, Hall T, Troquay RP, Turner T, Visseren FL, Wijngaard P, Wright RS, Kastelein JJ. Inclisiran in Patients at High Cardiovascular Risk with Elevated LDL Cholesterol. *N Engl J Med*. 2017;376:1430-40.
83. Ray KK, Wright RS, Kallend D, Koenig W, Leiter LA, Raal FJ, Bisch JA, Richardson T, Jaros M, Wijngaard PLJ, Kastelein JJP; ORION-10 and ORION-11 Investigators. Two Phase 3 Trials of Inclisiran in Patients with Elevated LDL Cholesterol. *N Engl J Med*. 2020;382:1507-19.
84. Tsimikas S. A Test in Context: Lipoprotein(a): Diagnosis, Prognosis, Controversies, and Emerging Therapies. *J Am Coll Cardiol*. 2017;69:692-711.
85. Clarke R, Peden JF, Hopewell JC, Kyriakou T, Goel A, Heath SC, Parish S, Barlera S, Franzosi MG, Rust S, Bennett D, Silveira A, Malarstig A, Green FR, Lathrop M, Gigante B, Leander K, de Faire U, Seedorf U, Hamsten A, Collins R, Watkins H, Farrall M; PROCARDIS Consortium. Genetic variants associated with Lp(a) lipoprotein level and coronary disease. *N Engl J Med*. 2009;361:2518-28.
86. Viney NJ, van Capelleveen JC, Geary RS, Xia S, Tami JA, Yu RZ, Marcovina SM, Hughes SG, Graham MJ, Crooke RM, Crooke ST, Witztum JL, Stroes ES, Tsimikas S. Antisense oligonucleotides targeting apolipoprotein(a) in people with raised lipoprotein(a): two randomised, double-blind, placebo-controlled, dose-ranging trials. *Lancet*. 2016;388:2239-53.