

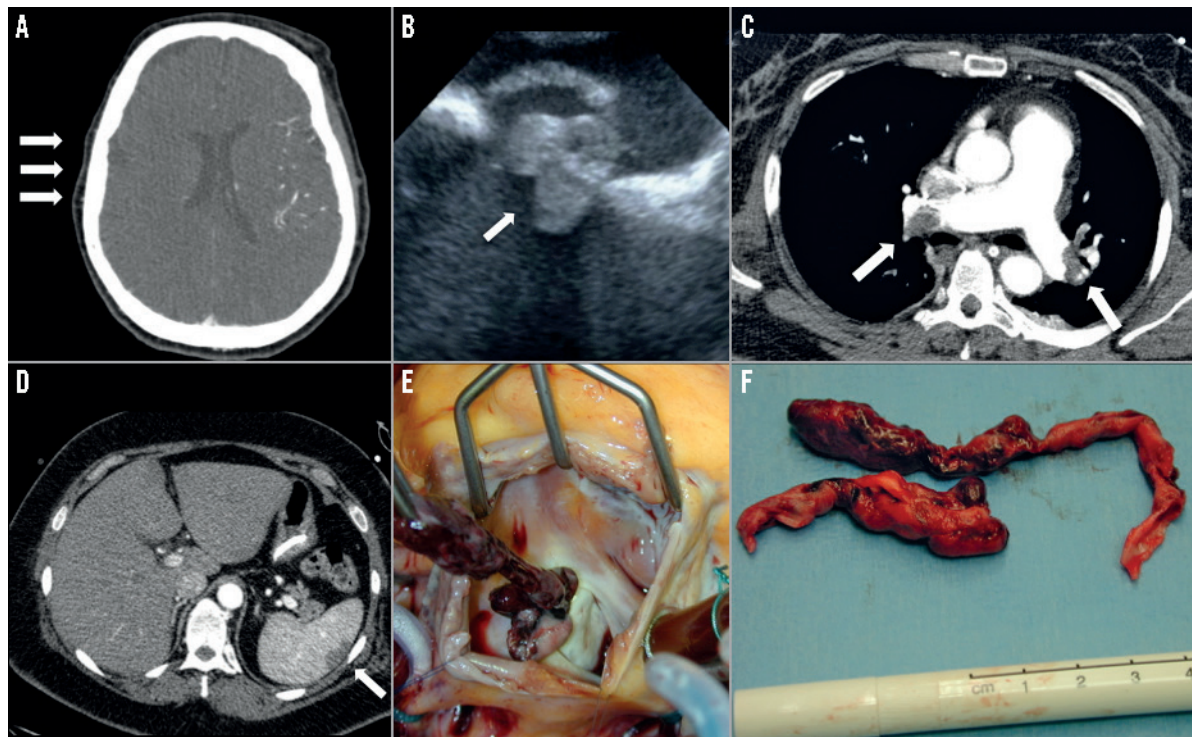
Intracardiac thrombus trapped in a patent foramen ovale



Oezguer A. Onur^{1,2*}, MD; Ferdinand Kuhn-Régnier³, MD; Christoph Kabbasch⁴, MD; Gereon R. Fink^{1,2}, MD; Jochen Müller-Ehmsen⁵, MD

1. Department of Neurology, University Hospital of Cologne, Cologne, Germany; 2. Cognitive Neuroscience (INM-3), Institute of Neuroscience and Medicine, Research Center Julich, Julich, Germany; 3. Department of Cardiothoracic Surgery, University Hospital of Cologne, Cologne, Germany; 4. Department of Radiology, University Hospital of Cologne, Cologne, Germany; 5. Department of Internal Medicine 3, Asklepios Klinik Altona, Hamburg, Germany

This paper also includes supplementary data published online at: http://www.pcronline.com/eurointervention/98th_issue/20



A 57-year-old woman was admitted to the University Hospital of Cologne after her husband had found her unconscious. Upon admission, gaze deviation to the right was observed. A cerebral CT scan revealed right hemispheric hypoperfusion (**Panel A**) and thrombolysis was performed. Subsequently, transoesophageal echocardiography showed a thrombus, which was trapped in a patent foramen ovale (**Panel B, Moving image 1**). A CT scan of the thorax and the abdomen revealed multiple pulmonary embolisms and an infarction of the spleen (**Panel C, Panel D**). A thrombectomy of the thrombus, with a length of 12 cm, and a closure of the patent foramen ovale were performed (**Panel E, Panel F**). Follow-up imaging revealed only a small cerebral infarct. Neurological examination was inconspicuous.

A consent form was obtained from the patient even though she cannot be personally identified from the images contained in this article.

Conflict of interest statement

The authors have no conflicts of interest to declare.

Supplementary data

Moving image 1. Thrombus trapped in a patent foramen ovale. Transoesophageal echocardiography showing a thrombus (arrowheads) in the right atrium, trapped in a patent foramen ovale (arrow), and extending into the left atrium. LA: left atrium; RA: right atrium

*Corresponding author: Department of Neurology, University Hospital of Cologne, Kerpener Str. 62, 50937 Cologne, Germany.
E-mail: oezguer.onur@uk-koeln.de

