

# Angiographic and clinical outcomes of STEMI patients treated with bioresorbable or metallic everolimus-eluting stents: a pooled analysis of individual patient data



Salvatore Cassese<sup>1\*</sup>, MD, PhD; Yuki Katagiri<sup>2</sup>, MD; Robert A. Byrne<sup>1,3</sup>, MB BCh, PhD; Salvatore Brugaletta<sup>4</sup>, MD, PhD; Fernando Alfonso<sup>5</sup>, MD, PhD; Lorenz Räber<sup>6</sup>, MD, PhD; Michael Maeng<sup>7</sup>, MD, PhD; Andres Iniguez<sup>8</sup>, MD, PhD; Evgeny Kretov<sup>9</sup>, MD; Yoshinobu Onuma<sup>10</sup>, MD, PhD; Michael Joner<sup>1,3</sup>, MD; Manel Sabaté<sup>4</sup>, MD, PhD; Karl-Ludwig Laugwitz<sup>3,11</sup>, MD, PhD; Stephan Windecker<sup>6</sup>, MD; Adnan Kastrati<sup>1,3</sup>, MD; Patrick W. Serruys<sup>12</sup>, MD, PhD

The authors' affiliations can be found in the Appendix paragraph.

GUEST EDITOR: Alec Vahanian, MD, PhD; Department of Cardiology, Hôpital Bichat-Claude Bernard, and University Paris VII, Paris, France.

This paper also includes supplementary data published online at: <https://eurointervention.pcronline.com/doi/10.4244/EIJ-D-18-01080>

## KEYWORDS

- bioresorbable scaffolds
- drug-eluting stent
- STEMI

## Abstract

**Aims:** Bioresorbable scaffolds (BRS) were conceived to ensure transient coronary artery support during antiproliferative drug delivery. However, the Absorb everolimus-eluting bioresorbable scaffold was found to be inferior to everolimus-eluting metallic stents (EES) in moderately complex coronary anatomies. We sought to investigate whether the Absorb represents a valuable option for the percutaneous treatment of patients with ST-elevation myocardial infarction (STEMI).

**Methods and results:** We pooled the individual patient data of two randomised trials specifically designed to investigate the performance of Absorb versus EES in patients with acute myocardial infarction (MI). The primary outcome was lesion (in-segment) diameter stenosis at angiographic follow-up. The main secondary outcome was the device-oriented composite endpoint (DOCE) of cardiac death, target vessel MI and target lesion revascularisation at one year. A total of 388 patients with STEMI were allocated to Absorb (n=227) or EES (n=161). Angiographic follow-up at one year was available for 332 (85.6%) patients. Lesion diameter stenosis was comparable between Absorb and EES (22.8±9.8% versus 23.6±11.2%; mean difference -0.8%, 95% confidence interval [CI]: -3.18-1.48, p=0.47). DOCE occurred in 21 patients at one year, with similar distribution between the Absorb and EES groups (5.3% versus 5.6%; hazard ratio 0.95, 95% CI: 0.40-2.26, p=0.91).

**Conclusions:** This pooled analysis provides evidence for a comparable angiographic performance and suggests similar clinical performance of Absorb and EES in STEMI patients undergoing percutaneous revascularisation. The long-term durability of Absorb and the extent to which newer BRS platforms might have a potential role in STEMI deserve further investigation. Both trials were registered at [www.clinicaltrials.gov](http://www.clinicaltrials.gov) (NCT01942070 and NCT01986803).

\*Corresponding author: Deutsches Herzzentrum München, Technische Universität München, Lazarettstrasse 36, 80636 Munich, Germany. E-mail: [cassese@dhm.mhn.de](mailto:cassese@dhm.mhn.de)

## Abbreviations

<b>BRS</b>	bioresorbable scaffold
<b>DOCE</b>	device-oriented composite endpoint
<b>EES</b>	everolimus-eluting stent
<b>PCI</b>	percutaneous coronary intervention
<b>POCE</b>	patient-oriented composite endpoint
<b>STEMI</b>	ST-elevation myocardial infarction

## Introduction

Bioresorbable scaffolds (BRS) are percutaneous coronary prostheses designed to offer a transient support for the dilated vessel and to dissolve into inert breakdown products over time, once the anti-proliferative function is completed<sup>1</sup>.

The fully bioresorbable, Absorb™ everolimus-eluting scaffold (Abbott Vascular, Santa Clara, CA, USA) represents the most studied bioresorbable platform to date. Initial data on percutaneous coronary intervention (PCI) with the Absorb in selected patients were encouraging, though not confirmed in subsequent randomised trials<sup>2</sup>. In fact, up to one year the Absorb displayed a twice as high thrombotic risk in comparison with the XIENCE metallic everolimus-eluting metallic stent (EES) (Abbott Vascular). More disappointingly, follow-up data beyond one year revealed that the risk of failure of the Absorb continued to accrue during longer-term follow-up<sup>3</sup>. In response to this, in September 2017 the manufacturer withdrew the Absorb from the market, though other BRS are approved for clinical use in Europe and available for clinical use.

Although individuals with ST elevation myocardial infarction (STEMI) were excluded from most randomised trials investigating the Absorb, these patients represent a subset that may derive greater benefit from treatment with BRS technology. In fact, the lesions of STEMI patients generally consist of soft, lipid-rich, thrombotic plaques located in larger vessel segments, with less resistance to dilation and more favourable healing patterns<sup>4</sup>. To shed more light on the angiographic and clinical performance of the Absorb versus EES in patients with STEMI, we performed a pooled analysis of individual patient data from the Intracoronary Scaffold Assessment a Randomised Evaluation of Absorb in Myocardial Infarction (ISAR-Absorb MI) and the Comparison of the ABSORB™ Everolimus Eluting Bioresorbable Vascular Scaffold System With a Drug-Eluting Metal Stent (Xience™) in Acute ST-Elevation Myocardial Infarction (ABSORB STEMI TROFI II) randomised trials.

Editorial, see page 1397

## Methods

Full details of the study population, methods, endpoints and primary analyses of the ISAR-Absorb MI<sup>5</sup> and ABSORB STEMI TROFI II<sup>4</sup> clinical trials have been reported previously. In brief, both were multicentre, open-label, randomised trials of patients with acute myocardial infarction (MI) undergoing PCI with either Absorb or EES. Between September 2013 and March 2017, the ISAR-Absorb MI trial enrolled 262 patients with STEMI (or NSTEMI with visible thrombus at baseline angiography) in five

centres: 173 participants were allocated to Absorb and 89 to EES. Between January and September 2014, the ABSORB STEMI TROFI II trial enrolled 191 patients with STEMI in eight centres: 95 participants received Absorb and 96 received EES.

Inclusion criteria were broadly comparable between the studies. To be included, patients should be aged  $\geq 18$  years, present with MI and planned to receive a stent in *de novo* lesions in native vessels or coronary bypass grafts with a reference vessel diameter  $\geq 2.25$  mm and  $\leq 3.9$  mm. Patients were considered ineligible for the studies if they had a target lesion located in an unprotected left main trunk, cardiogenic shock, malignancies or other comorbid conditions with life expectancy  $< 12$  months or that may result in protocol non-compliance or had contraindications or a known allergy to antiplatelet therapy, stent components or pregnancy (present, suspected or planned). Patient allocation to each of the treatment groups was in a 2:1 proportion in the ISAR-Absorb MI trial and in equal proportion in the ABSORB STEMI TROFI II trial. The primary endpoints of the ISAR-Absorb MI and ABSORB STEMI TROFI II trials were percentage diameter stenosis at six- to eight-month coronary angiography and neointimal healing score at six-month optical coherence tomography, respectively. In both trials, a non-inferiority design served to test the primary study hypothesis.

For patients treated with the Absorb, the protocol of ISAR-Absorb MI had no explicit recommendation for lesion preparation, vessel and device sizing or for scaffold post-dilation, though predilation was strongly encouraged. In the ABSORB STEMI TROFI II trial, manual thrombus aspiration with at least two passages was mandatory to reduce thrombus burden. All patients were pre-treated with aspirin (250 to 500 mg) before PCI in both trials. In all cases, anticoagulation during PCI was accomplished by intra-arterial or intravenous administration of heparin up to a total amount of 100 U/kg body weight or bivalirudin (intravenous bolus of 0.75 mg/kg prior to the start of the intervention, followed by infusion of 1.75 mg/kg per hour for the duration of the procedure). After the intervention, all patients received dual antiplatelet therapy (DAPT) according to the recommendations of guideline-writing authorities<sup>6</sup>. Other cardioactive drugs were prescribed according to standard practice.

## COLLECTION OF PATIENT-LEVEL DATA

For the purpose of this study, the principal investigators of the ABSORB STEMI TROFI II trial were contacted to provide individual data of participants. After agreement, anonymised data were transferred to the Deutsches Herzzentrum München, Technische Universität München, Munich, Germany, and merged with those of ISAR-Absorb MI in a single dedicated database. The final data set was checked for completeness and consistency and compared with the results from prior publications. The principal investigators were directly contacted in case of inconsistencies with the original publications or requirement for additional data. Divergences were resolved by consensus. Data were analysed according to the intention-to-treat principle. The institutional review board or ethics committee at each participating centre approved the studies included in the present analysis, and all patients signed informed, written consent before receiving the assigned treatment in each trial.

## OUTCOME VARIABLES

The primary outcome of this analysis was lesion (in-segment) percentage diameter stenosis at repeat coronary angiography six to eight months after intervention. The main secondary outcome was the device-oriented composite endpoint (DOCE) of cardiac death/target vessel MI/target lesion revascularisation (TLR). Other angiographic endpoints of interest were in-device percentage diameter stenosis, late lumen loss (LLL) and binary restenosis. Other clinical endpoints of interest were the composite of death/any MI/all revascularisation (patient-oriented composite endpoint [POCE]), each individual component of the main secondary outcome and the incidence of definite/probable scaffold or stent thrombosis. Study definitions have been described in detail previously<sup>4,5</sup>. Clinical follow-up was up to 12 months.

## STATISTICAL ANALYSIS

Statistical analysis is shown in **Supplementary Appendix 1**.

## Results

A total of 453 patients were enrolled in the two trials (**Supplementary Figure 1**). Of these, 65 patients with NSTEMI and visible thrombus at coronary angiography enrolled in the ISAR-Absorb MI trial were excluded, leaving 388 individuals with STEMI (227 assigned to Absorb and 161 to EES) available for final analyses. Baseline characteristics were well balanced between the treatment groups and matched those typically associated with STEMI patients. In fact, participants were relatively young, overweight, the overwhelming majority being male, and a high proportion having hyperlipidaemia and a smoking habit (**Table 1**).

**Table 1. Baseline clinical characteristics.**

	Absorb	EES	p-value
Patients	227	161	
Age	60.0±10.9	60.3±10.0	0.76
Body mass index, kg/m <sup>2</sup>	27.0±3.9	27.4±4.0	0.21
Female gender	43 (18.9)	31 (19.2)	0.94
Diabetes mellitus	45 (19.8)	25/159 (15.7)	0.30
Insulin-dependent	32 (14.1)	14/159 (8.8)	
Hypertension	104/224 (46.4)	72/159 (45.3)	0.82
Hyperlipidaemia	110/224 (49.1)	85/158 (53.8)	0.36
Smoking	136 (59.9)	98/159 (61.6)	0.73
Prior MI	12/226 (5.3)	6 (3.7)	0.62
Prior PCI	4/226 (1.7)	3 (1.8)	>0.99
Killip class	I	214 (94.3)	0.92
	II	9 (3.9)	
	III	2 (0.9)	
	IV	2 (0.9)	
Data shown as mean±SD or number (percentage); denominators are provided when they differ from the total number of patients. MI: myocardial infarction; PCI: percutaneous coronary intervention			

Baseline lesion and procedural characteristics were well balanced between the treatment groups (**Table 2**). The infarct-related vessels more frequently comprised the left anterior descending or the right coronary artery. A complete occlusion of the infarct-related vessel was observed in circa 60% of patients. Predilation (78.3% and 63.1%, p=0.001) and post-dilation (53.3% and

**Table 2. Baseline angiographic and procedural characteristics.**

	Absorb	EES	p-value
Culprit lesions	227	161	
Target vessel	Left anterior descending	99 (43.6)	0.30
	Left circumflex	35 (15.9)	
	Right coronary artery	92 (40.5)	
Bifurcation	23/225 (10.2)	18 (11.2)	0.76
TIMI flow, pre PCI	0	131/226 (57.9)	0.61
	1	11/226 (4.9)	
	2	30/226 (13.3)	
	3	54/226 (23.9)	
Procedural anticoagulation therapy	Heparin	196 (86.3)	0.40
	Bivalirudin	7 (3.1)	
	Heparin plus bivalirudin	18 (8.0)	
	Not specified	6 (2.6)	
Predilation	177/226 (78.3)	101/160 (63.1)	0.001
Nominal diameter of first balloon (mm)	2.7±0.5	2.6±0.5	0.15
Balloon pressure, max (atm)	14.0±3.8	13.5±3.4	0.29
Thrombus aspiration	127 (55.9)	98 (60.9)	0.33
Stent diameter, max (mm)	3.2±0.3	3.2±0.4	0.28
Number of primary stents used	1.08±0.3	1.08±0.3	0.79
Total stented length (mm)	24.8±11.3	26.7±14.0	0.17
Post-dilation	121 (53.3)	52 (32.3)	<0.001
Nominal diameter of largest balloon (mm)	3.3±0.4	3.3±0.5	0.95
Balloon pressure, max (atm)	16.8±3.9	16.8±4.1	0.99
TIMI flow, post PCI	0	–	0.50
	1	–	
	2	5/226 (2.2)	
	3	221/226 (97.8)	
<b>Quantitative coronary angiography analysis</b>			
Pre-intervention			
Reference diameter (mm)	2.90±0.43	2.92±0.47	0.72
Minimal lumen diameter (mm)	0.28±0.39	0.25±0.40	0.39
Diameter stenosis (%)	89.8±13.7	91.1±14.1	0.40
Post-intervention			
Minimal lumen diameter (mm)	2.54±0.41	2.60±0.43	0.22
Diameter stenosis (%)	14.1±8.6	12.6±5.5	0.03
Data shown as mean±SD or number (percentage); denominators are provided when they differ from the total number of patients. EES: everolimus-eluting stent; PCI: percutaneous coronary intervention; TIMI: Thrombolysis In Myocardial Infarction			

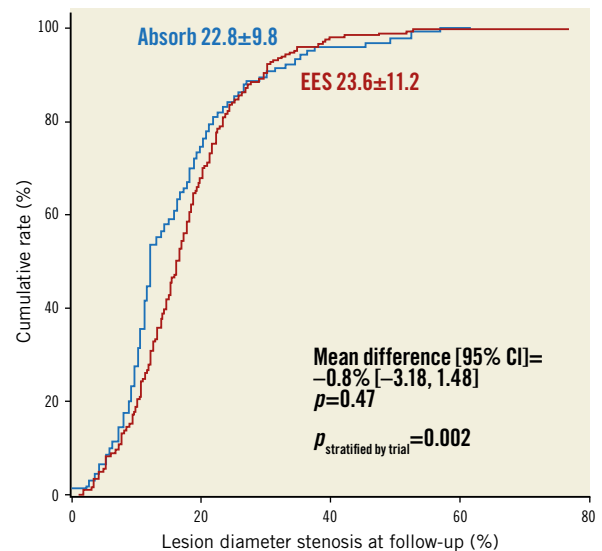
32.3%,  $p < 0.001$ ) were more common in patients treated with Absorb versus EES, respectively. After PCI, the minimal lumen diameter was non-significantly smaller with Absorb versus EES ( $2.54 \pm 0.41$  mm versus  $2.60 \pm 0.43$  mm,  $p = 0.22$ ), whilst the residual percentage diameter stenosis was significantly higher with Absorb compared with EES ( $14.1 \pm 8.6\%$  versus  $12.6 \pm 5.5\%$ ,  $p = 0.03$ ). Six (2.6%) patients allocated to the Absorb did not receive the assigned stent and were treated with EES. Two (1.2%) patients allocated to EES did not receive the assigned stent and were treated with the Absorb. At discharge, all patients received thienopyridines (ticagrelor: 219 [56.7%]; prasugrel: 128 [33.2%]; clopidogrel: 39 [10.1%]). The discharge therapy was unknown in two (0.5%) patients.

Angiographic follow-up was available for 332 (85.6%) patients without significant difference between treatment groups ( $p = 0.72$ ). The median time to angiographic follow-up was shorter with Absorb – 230 (208, 278) days – as compared to EES – 241 (211, 307) days – ( $p = 0.03$ ). **Table 3** resumes the angiographic outcomes of the study. The primary outcome of lesion diameter stenosis was  $22.8 \pm 9.8\%$  with Absorb versus  $23.6 \pm 11.2\%$  with EES, with a mean difference of  $-0.8\%$  ( $-3.18, 1.48$ ),  $p = 0.47$  (**Figure 1**). The analysis stratified by trial revealed a significant interaction between the treatment effect and the primary angiographic outcome ( $p = 0.002$ ). In fact, lesion diameter stenosis was  $23.7 \pm 11.4\%$  with Absorb versus  $29.3 \pm 12.1\%$  with EES ( $p = 0.006$ ) in the ISAR-Absorb MI trial, and  $21.6 \pm 7.3\%$  with Absorb versus  $20.2 \pm 9.0\%$  with EES ( $p = 0.27$ ) in the ABSORB STEMI TROFI II trial.

Absorb was associated with a higher degree of in-device diameter stenosis as compared to EES ( $17.3 \pm 9.9\%$  versus  $15.9 \pm 11.1\%$ , mean difference  $1.4\%$  [ $-0.89, 3.78$ ],  $p = 0.019$ ). LLL was comparable for in-segment ( $0.20 \pm 0.36$  mm with Absorb versus  $0.24 \pm 0.35$  mm with EES,  $p = 0.37$ ) (**Supplementary Figure 2A**) and in-device

**Table 3. Angiographic follow-up at 6-8 months.**

	Absorb	EES	p-value
Lesions/patients assessed	193	139	
Days to angiographic follow-up	230 (208, 278)	241 (211, 307)	0.03
In-segment analysis			
Late lumen loss (mm)	$0.20 \pm 0.36$	$0.24 \pm 0.35$	0.37
Minimal lumen diameter (mm)	$2.21 \pm 0.44$	$2.17 \pm 0.47$	0.42
Diameter stenosis (%)	$22.8 \pm 9.8$	$23.6 \pm 11.2$	0.47
Binary restenosis	4 (2.1)	5 (3.5)	0.40
In-device analysis			
Late lumen loss (mm)	$0.16 \pm 0.26$	$0.13 \pm 0.36$	0.43
Minimal lumen diameter (mm)	$2.40 \pm 0.46$	$2.43 \pm 0.51$	0.49
Diameter stenosis (%)	$17.3 \pm 9.9$	$15.9 \pm 11.1$	0.019
Data shown as mean $\pm$ SD or median (IQR) or number (percentage). EES: everolimus-eluting stent			



**Figure 1.** Primary outcome: lesion percentage diameter stenosis at six- to eight-month angiographic follow-up. Cumulative frequency distribution for lesion diameter stenosis at follow-up angiography. P-values are presented unadjusted and stratified by trial.

measurements ( $0.16 \pm 0.26$  mm with Absorb versus  $0.13 \pm 0.36$  mm with EES,  $p = 0.43$ ). Overall, binary restenosis was observed in nine patients (four patients with Absorb and five patients with EES,  $p = 0.40$ ). There were no cases of complete restenotic occlusion at follow-up.

Clinical follow-up up to 12 months was available in all patients, with a similar duration among treatment groups ( $p = 0.59$ ). The clinical outcomes are summarised in **Table 4**. DOCE occurred in 12 (5.3%) patients treated with Absorb versus 9 (5.6%) with EES (HR 0.95, 95% CI: 0.40-2.26,  $p = 0.91$ ) (**Figure 2**). Findings were consistent in the analysis stratified by trial ( $p = 0.67$ ).

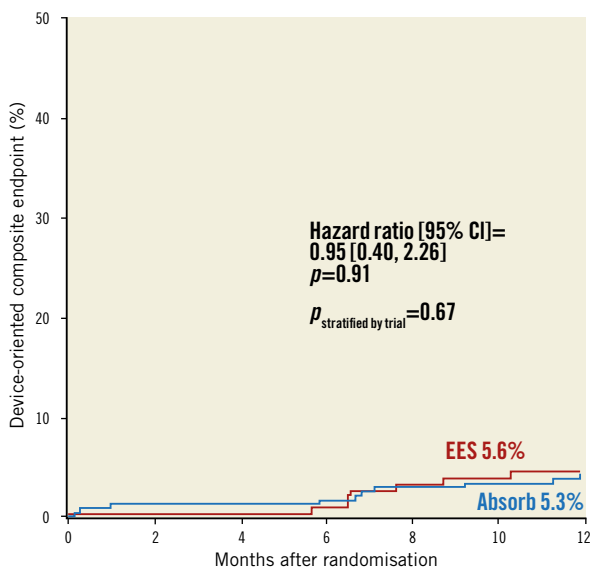
POCE occurred in 36 (15.9%) patients treated with Absorb versus 24 (14.9%) with EES (HR 1.08, 95% CI: 0.64-1.81,  $p = 0.76$ ) (**Supplementary Figure 2B**). Cardiac death occurred in 5 (2.2%) patients treated with Absorb versus 2 (1.2%) with EES (HR 1.77, 95% CI: 0.35-8.96,  $p = 0.49$ ). Target vessel MI occurred in 2 (1.1%) patients treated with Absorb versus 2 (1.2%) with EES (HR 0.71, 95% CI: 0.10-4.99,  $p = 0.73$ ). TLR occurred in 7 (3.1%) patients with Absorb versus 7 (4.4%) patients with EES (HR 0.71, 95% CI: 0.25-2.03,  $p = 0.53$ ) (**Supplementary Figure 2C**). Definite/probable stent or scaffold thrombosis occurred in 4 (1.8%) patients with Absorb versus 2 (1.2%) patients with EES (HR 1.41, 95% CI: 0.26-7.63,  $p = 0.69$ ).

The treatment effect for the primary angiographic and main secondary clinical outcomes had no interaction with age ( $p$  for interaction –  $p_{int} \geq 0.24$ ), gender ( $p_{int} \geq 0.37$ ), diabetic status ( $p_{int} \geq 0.15$ ), thienopyridines at discharge ( $p_{int} \geq 0.66$ ), presence or absence of Thrombolysis In Myocardial Infarction (TIMI) 0 flow pre PCI ( $p_{int} \geq 0.26$ ), thrombus aspiration ( $p_{int} \geq 0.51$ ), predilation ( $p_{int} \geq 0.06$ ), post-dilation ( $p_{int} \geq 0.19$ ) and total stented length ( $p_{int} \geq 0.69$ ) (**Supplementary Table 1**).

**Table 4. Clinical results at 12 months.**

	Absorb	EES	Hazard ratio [95% CI]	p-value
Patients	227	161		
Death	6 (2.6)	2 (1.2)	2.12 [0.44, 10.14]	0.36
Cardiac death	5 (2.2)	2 (1.2)	1.77 [0.35, 8.96]	0.49
<b>Device-oriented outcomes</b>				
Definite or probable device thrombosis	4 (1.8)	2 (1.2)	1.41 [0.26, 7.63]	0.69
Definite device thrombosis	3 (1.3)	2 (1.2)	1.05 [0.17, 6.33]	0.95
Probable device thrombosis	1 (0.5)	0	N/A	0.89
Target vessel myocardial infarction	2 (1.1)	2 (1.2)	0.71 [0.10, 4.99]	0.73
Target lesion revascularisation	7 (3.1)	7 (4.4)	0.71 [0.25, 2.03]	0.53
Composite of cardiac death, target vessel myocardial infarction, target lesion revascularisation (device-oriented composite endpoint)	12 (5.3)	9 (5.6)	0.95 [0.40, 2.26]	0.91
<b>Patient-oriented outcomes</b>				
Myocardial infarction	5 (2.2)	4 (2.5)	0.88 [0.23, 3.31]	0.86
Target vessel revascularisation	13 (5.8)	12 (7.5)	0.77 [0.35, 1.69]	0.52
Non-target vessel revascularisation	20 (9.0)	13 (8.2)	1.10 [0.55, 2.22]	0.77
All revascularisation	29 (13.0)	22 (13.7)	0.95 [0.54, 1.66]	0.87
Composite of death, myocardial infarction, any revascularisation (patient-oriented composite endpoint)	36 (15.9)	24 (14.9)	1.08 [0.64, 1.81]	0.76

Data shown as number (percentages are Kaplan-Meier estimates). CI: confidence interval; EES: everolimus-eluting stent; N/A: not applicable



Patients at risk							
Absorb	227	221	220	219	215	214	214
EES	161	159	159	158	154	153	152

**Figure 2.** Main secondary outcome: device-oriented composite endpoint. Survival analysis curves for the composite of cardiac death, target vessel myocardial infarction and target lesion revascularisation. P-values are derived from Cox proportional hazards models and are presented unadjusted and stratified by trial.

## Discussion

In this analysis, we pooled the largest cohort of STEMI patients receiving a PCI with either Absorb or EES among randomised trials with angiographic follow-up. The main findings were that: i) Absorb

was comparable to EES in terms of angiographic outcomes at six to eight months and in terms of clinical outcomes at 12 months; ii) in the subgroup analysis there was no evidence of interaction between several clinical, angiographic and procedural features and treatment effect for primary angiographic and main secondary outcomes. However, some issues need to be considered when interpreting the data.

First, lesion diameter stenosis was chosen as the primary angiographic outcome. Previous investigations have shown that this surrogate endpoint represents a reliable parameter of device efficacy<sup>7</sup>. In this regard, the overall comparable angiographic performance of Absorb and EES observed in this study is noteworthy. Indeed, earlier trials including patients with predominantly stable coronary artery disease and/or moderately complex anatomies found inferior angiographic efficacy of Absorb versus EES after a follow-up duration comparable to that accumulated for the present study<sup>2</sup>. The mechanical properties of Absorb are likely to play a major role. In particular, the expansion capability of the current Absorb could not approximate that of metallic stents<sup>8</sup>, failing more often in complex coronary anatomies<sup>9</sup>. In contrast, STEMI lesions typically consist of less bulky, lipid-rich plaques with a necrotic core and superimposed thrombi, without relevant calcifications. By expanding more easily, these lesions appear more suitable to scaffolding with BRS. Consistent with previous data<sup>10</sup>, we found a lower minimum lumen diameter after PCI with Absorb as compared to EES, reflecting the intrinsic limitation of this technology. However, the treatment groups did not differ for this parameter at angiographic follow-up, suggesting a relatively stable mechanical behaviour of Absorb in STEMI patients, without instances of late recoil as previously observed<sup>11</sup>.

Second, the risk for DOCE at 12 months was similar with Absorb and EES. However, this analysis is underpowered to detect potential clinical differences between the treatment groups. Previous registry data demonstrated a poor one-year clinical performance with Absorb in STEMI, mainly attributable to more frequent scaffold thrombosis within 30 days after implantation<sup>12</sup>. The lack of an optimised technique for Absorb implantation (predilation, appropriate vessel sizing, and high-pressure post-dilation) was deemed responsible for this increased risk<sup>13</sup>. At the same time, some experts proposed to intensify DAPT after Absorb implantation<sup>14</sup>. Although we recognise the importance of a proper implantation technique to improve the acute and late performance of stents and scaffolds, this pooled analysis of randomised trials did not find a significant interaction between pre- and post-deployment dilation rates and the treatment effect for main outcomes. Moreover, the use of more potent ADP-receptor antagonists did not impact on the angiographic and clinical efficacy of Absorb versus EES in this study, though approximately 90% of our cohort received highly effective antiplatelet drugs as standard treatment for STEMI.

Third, our data lend support to device iteration and appropriate lesion selection as a prerequisite for future BRS technologies. Indeed, two recent randomised trials including patients with higher anatomical complexity (30-day and 1-year results from the ABSORB IV randomised trial<sup>15</sup> and COMPARE-ABSORB 1-year results, presented by P.C. Smits at the Transcatheter Cardiovascular Therapeutics meeting [TCT 2018], San Diego, CA, September 25, 2018) found Absorb to be associated with a higher risk of thrombosis at one year despite the adoption of specific implantation protocols and relatively high proportions of DAPT after PCI. In this regard, although the platform investigated in this analysis is no longer available for clinical use, several BRS are in development or under investigation<sup>16</sup>. Thus, the present study may serve as an evidence base for future trials investigating improved or new BRS in STEMI, pending the demonstration of at least non-inferiority in comparison with current high-performance metallic drug-eluting stents (DES)<sup>17</sup>.

### Study limitations

The current study presents a number of limitations. First, this analysis has the limitations inherent to pooled analyses and reflects the flaws of the original trials. Amongst others, the studies included were open-label, which represents a source of bias. In addition, they focused on a single BRS platform. Second, angiographic data were collected by two different core labs; this may partially account for the significant interaction observed between treatment effect and primary angiographic outcome. Third, this study was not powered to evaluate the performance of Absorb versus EES in specific subgroups of patients; in this regard, the present analysis remains exploratory in nature. Finally, the clinical follow-up was limited to one year. Longer follow-up remains crucial for two reasons – to ascertain definitively the durability of the Absorb and to address whether BRS technology has late advantages compared to current metallic DES in STEMI.

## Conclusions

In STEMI patients undergoing a percutaneous revascularisation, this pooled analysis of individual participant data from two randomised trials suggests comparable performance of Absorb and EES at angiographic and clinical follow-up. The results remained consistent across several subgroups of patients. The long-term durability of the Absorb and the extent to which newer BRS platforms might have a potential role in STEMI remains to be studied further.

### Impact on daily practice

This study provides evidence for a comparable performance of Absorb and everolimus-eluting metallic stents in STEMI patients undergoing percutaneous revascularisation. Although the bioresorbable platform investigated in this analysis is no longer available for clinical use, several scaffolds are in development or under investigation. Thus, the present study may serve as an evidence base for future trials investigating improved or new bioresorbable scaffolds in STEMI.

### Appendix. Authors' affiliations

1. Deutsches Herzzentrum München, Technische Universität München, Munich, Germany; 2. Amsterdam University Medical Centre, Amsterdam, the Netherlands; 3. DZHK (German Centre for Cardiovascular Research), partner site Munich Heart Alliance, Munich, Germany; 4. Hospital Clinic, Institut Clinic Cardiovascular, Institut d'Investigacions Biomèdiques August Pi i Sunyer (IDIBAPS), University of Barcelona, Barcelona, Spain; 5. Department of Cardiology, Hospital Universitario de La Princesa Madrid, Madrid, Spain; 6. Department of Cardiology, Inselspital, Bern University Hospital, University of Bern, Bern, Switzerland; 7. Department of Cardiology, Aarhus University Hospital, Aarhus, Denmark; 8. Complejo Hospitalario Universitario, Hospital Alvaro Cunqueiro, Vigo, Spain; 9. E.N. Meshalkin National Medical Research Center, Novosibirsk, Russia; 10. Thoraxcenter, Erasmus Medical Center, Rotterdam, the Netherlands; 11. Clinic and Polyclinic Internal Medicine I (Cardiology and Angiology), Klinikum rechts der Isar, Technische Universität München, Munich, Germany; 12. NHLI, Imperial College London, London, United Kingdom

### Guest Editor

This paper was guest edited by Alec Vahanian, MD, PhD; Department of Cardiology, Hôpital Bichat-Claude Bernard, and University Paris VII, Paris, France.

### Conflict of interest statement

R.A. Byrne reports receiving lecture fees/honoraria from B. Braun Melsungen AG, Biotronik, Boston Scientific and Micell Technologies and research grants to the institution from Boston Scientific and CeloNova Biosciences. L. Räber has received grants to the institution from Abbott Vascular, Sanofi and Regeneron, and speaker or consulting fees from Abbott Vascular, Amgen, AstraZeneca, Biotronik, and CSL Behring. Y. Onuma is a member of the Advisory Board for

Abbott Vascular and has received speaker honoraria from Terumo. M. Joner reports being a consultant for and receiving speaker fees from Biotronik and OrbusNeich. M. Sabaté reports receiving consultancy fees from Abbott Vascular. S. Windecker reports receiving research grants to the institution from Abbott Vascular, Amgen, Biotronik, Boston Scientific, Medtronic, Edwards Lifesciences, St. Jude and Terumo. P.W. Serruys is a member of the Advisory Board for Abbott Vascular. The other authors have no conflicts of interest to declare. The Guest Editor is a consultant for Edwards Lifesciences.

## References

- Byrne RA, Stefanini GG, Capodanno D, Onuma Y, Baumbach A, Escaned J, Haude M, James S, Joner M, Jüni P, Kastrati A, Oktay S, Wijns W, Serruys PW, Windecker S. Report of an ESC-EAPCI Task Force on the evaluation and use of bioresorbable scaffolds for percutaneous coronary intervention: executive summary. *Eur Heart J*. 2018;39:1591-601.
- Cassese S, Byrne RA, Ndrepepa G, Kufner S, Wiebe J, Repp J, Schunkert H, Fusaro M, Kimura T, Kastrati A. Everolimus-eluting bioresorbable vascular scaffolds versus everolimus-eluting metallic stents: a meta-analysis of randomised controlled trials. *Lancet*. 2016;387:537-44.
- Cassese S, Byrne RA, Jüni P, Wykrzykowska JJ, Puricel S, Ndrepepa G, Schunkert H, Fusaro M, Cook S, Kimura T, Henriques JPS, Serruys PW, Windecker S, Kastrati A. Midterm clinical outcomes with everolimus-eluting bioresorbable scaffolds versus everolimus-eluting metallic stents for percutaneous coronary interventions: a meta-analysis of randomised trials. *EuroIntervention*. 2018;13:1565-73.
- Sabaté M, Windecker S, Iniguez A, Okkels-Jensen L, Cequier A, Brugaletta S, Hofma SH, Räber L, Christiansen EH, Suttrop M, Pilgrim T, Anne van Es G, Sotomi Y, Garcia-Garcia HM, Onuma Y, Serruys PW. Everolimus-eluting bioresorbable stent vs. durable polymer everolimus-eluting metallic stent in patients with ST-segment elevation myocardial infarction: results of the randomized ABSORB ST-segment elevation myocardial infarction-TROFI II trial. *Eur Heart J*. 2016;37:229-40.
- Byrne RA, Alfonso F, Schneider S, Maeng M, Wiebe J, Evgeny K, Bradaric C, Rai H, Cuesta J, Rivero F, Hoppmann P, Schlichtenmaier J, Christiansen EH, Cassese S, Joner M, Schunkert H, Laugwitz KL, Kastrati A. Prospective, randomized trial of bioresorbable scaffolds versus everolimus-eluting stents in patients undergoing coronary stenting for myocardial infarction: the Intracoronary Scaffold Assessment a Randomized evaluation of Absorb in Myocardial Infarction (ISAR-Absorb MI) Trial. *Eur Heart J*. 2019;40:167-76.
- Authors/Task Force members, Windecker S, Kolh P, Alfonso F, Collet JP, Cremer J, Falk V, Filippatos G, Hamm C, Head SJ, Jüni P, Kappetein AP, Kastrati A, Knuuti J, Landmesser U, Laufer G, Neumann FJ, Richter DJ, Schauerte P, Sousa Uva M, Stefanini GG, Taggart DP, Torracca L, Valgimigli M, Wijns W, Witkowski A. 2014 ESC/EACTS Guidelines on myocardial revascularization: The Task Force on Myocardial Revascularization of the European Society of Cardiology (ESC) and the European Association for Cardio-Thoracic Surgery (EACTS) Developed with the special contribution of the European Association of Percutaneous Cardiovascular Interventions (EAPCI). *Eur Heart J*. 2014;35:2541-619.
- Pocock SJ, Lansky AJ, Mehran R, Popma JJ, Fahy MP, Na Y, Dangas G, Moses JW, Pucelikova T, Kandzari DE, Ellis SG, Leon MB, Stone GW. Angiographic surrogate end points in drug-eluting stent trials: a systematic evaluation based on individual patient data from 11 randomized, controlled trials. *J Am Coll Cardiol*. 2008;51:23-32.
- Ormiston J, Motreff P, Darremont O, Webber B, Guerin P, Webster M. Bioresorbable scaffolds on the bench. *EuroIntervention*. 2015;11 Suppl V: V166-9.
- Wykrzykowska JJ, Kraak RP, Hofma SH, van der Schaaf RJ, Arkenbout EK, IJsselmuiden AJ, Elias J, van Dongen IM, Tijssen RYG, Koch KT, Baan J Jr, Vis MM, de Winter RJ, Piek JJ, Tijssen JGP, Henriques JPS; AIDA Investigators. Bioresorbable Scaffolds versus Metallic Stents in Routine PCI. *N Engl J Med*. 2017;376:2319-28.
- Fam JM, Felix C, van Geuns RJ, Onuma Y, Van Mieghem NM, Karanasos A, van der Sijde J, De Paolis M, Regar E, Valgimigli M, Daemen J, de Jaegere P, Zijlstra F, Diletti R. Initial experience with everolimus-eluting bioresorbable vascular scaffolds for treatment of patients presenting with acute myocardial infarction: a propensity-matched comparison to metallic drug eluting stents 18-month follow-up of the BVS STEMI first study. *EuroIntervention*. 2016;12:30-7.
- Cassese S, Hoppmann P, Kufner S, Byrne RA, Wiebe J, Colleran R, Giacoppo D, Harada Y, Laugwitz KL, Schunkert H, Fusaro M, Kastrati A. Intraindividual Comparison of Everolimus-Eluting Bioresorbable Vascular Scaffolds Versus Drug-Eluting Metallic Stents. *Circ Cardiovasc Interv*. 2016 Aug;9(8).
- Brugaletta S, Gori T, Low AF, Tousek P, Pinar E, Gomez-Lara J, Scalone G, Schulz E, Chan MY, Kocka V, Hurtado J, Gomez-Hospital JA, Münzel T, Lee CH, Cequier A, Valdés M, Widimsky P, Serruys PW, Sabaté M. Absorb bioresorbable vascular scaffold versus everolimus-eluting metallic stent in ST-segment elevation myocardial infarction: 1-year results of a propensity score matching comparison: the BVS-EXAMINATION Study (bioresorbable vascular scaffold-a clinical evaluation of everolimus eluting coronary stents in the treatment of patients with ST-segment elevation myocardial infarction). *JACC Cardiovasc Interv*. 2015;8:189-97.
- Ielasi A, Campo G, Rapetto C, Varricchio A, Cortese B, Brugaletta S, Geraci S, Vicinelli P, Scotto di Uccio F, Secco GG, Poli A, Nicolini E, Ishida K, Latib A, Tespili M. A Prospective Evaluation of a Pre-Specified Absorb BVS Implantation Strategy in ST-Segment Elevation Myocardial Infarction: The BVS STEMI STRATEGY-IT Study. *JACC Cardiovasc Interv*. 2017;10:1855-64.
- Stone GW. Very late scaffold thrombosis: is prolonged DAPT the answer? *EuroIntervention*. 2017;13:e139-41.
- Stone GW, Ellis SG, Gori T, Metzger DC, Stein B, Erickson M, Torzewski J, Williams J Jr, Lawson W, Broderick TM, Kabour A, Piegari G, Cavendish J, Bertolet B, Choi JW, Marx SO, Généreux P, Kereiakes DJ. Blinded outcomes and angina assessment of coronary bioresorbable scaffolds: 30-day and 1-year results from the ABSORB IV randomized trial. *Lancet*. 2018;392:1530-40.
- Sotomi Y, Onuma Y, Collet C, Tenekecioglu E, Virmani R, Kleiman NS, Serruys PW. Bioresorbable Scaffold: The Emerging Reality and Future Directions. *Circ Res*. 2017;120:1341-52.
- Bangalore S, Toklu B, Patel N, Feit F, Stone GW. Newer Generation Ultra-Thin Strut Drug-Eluting Stents versus Older Second-Generation Thicker Strut Drug-Eluting Stents for Coronary Artery Disease. *Circulation*. 2018;138: 2216-26.

## Supplementary data

**Supplementary Appendix 1.** Statistical analysis.

**Supplementary Figure 1.** Flow chart of the analysis.

**Supplementary Figure 2.** Main secondary outcomes.

**Supplementary Table 1.** Subgroup analysis for primary angiographic and main secondary clinical outcomes.

The supplementary data are published online at:

<https://eurointervention.pconline.com/>

doi/10.4244/EIJ-D-18-01080



## **Supplementary data**

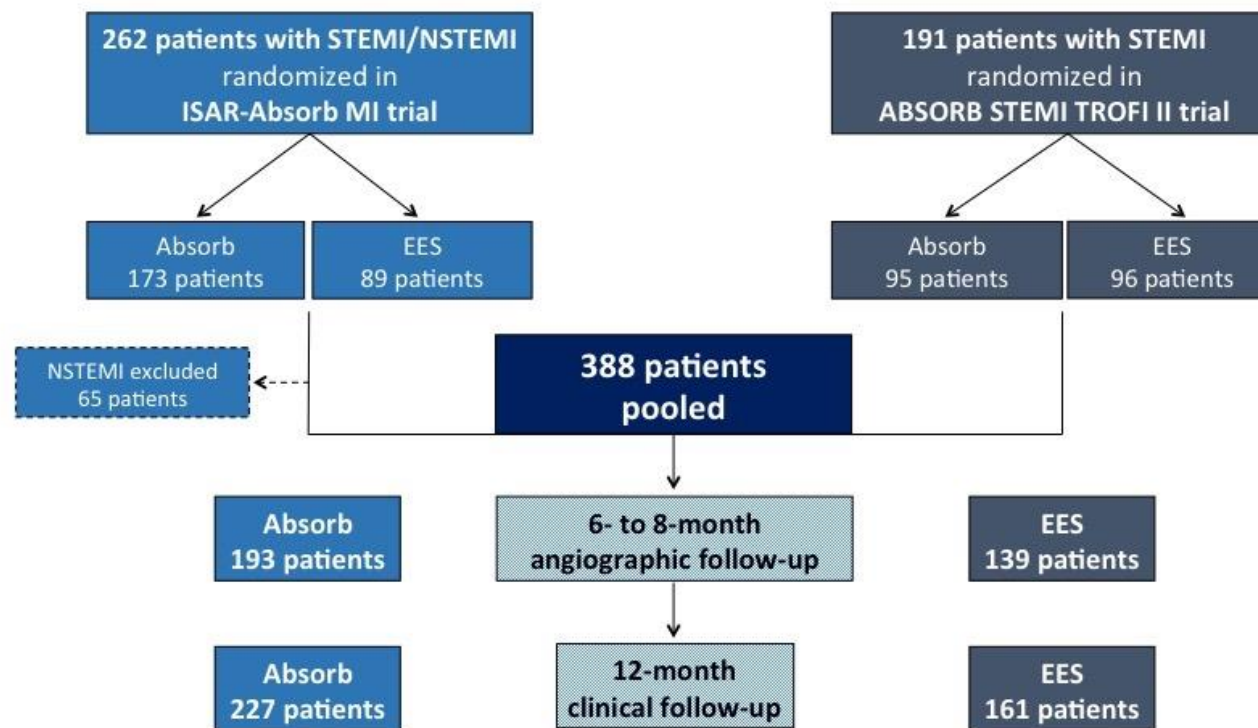
### **Supplementary Appendix 1. Statistical analysis**

The data are presented as counts (proportions), means $\pm$ SD or median (interquartile range). Categorical variables were compared between treatment groups using the chi-squared test or Fisher's exact test (where at least one expected cell value was  $<5$ ). Continuous variables were compared using t-tests or the Wilcoxon rank-sum test in case of skewed distribution. Time-to-event analyses are displayed as counts and rates computed according to the Kaplan-Meier method, with risk estimates presented as hazard ratios (HRs) with 95% confidence intervals [CIs]. Two-way analysis of variance stratified by trial for the primary outcome and Cox proportional hazards models stratified by trial for the main secondary outcomes served to evaluate the consistency of the treatment effect across several subgroups of patients defined by age (under versus above the median value), gender, diabetic status, thienopyridines at discharge, Thrombolysis In Myocardial Infarction (TIMI) 0 flow pre PCI, thrombus aspiration, predilation, post-dilation and total stented length (under versus above the median value). All analyses were performed in R (version 3.5.0; R Foundation for Statistical Computing, Vienna, Austria).



**Supplementary Figure 1.** Flow chart of the analysis.

ABSORB STEMI TROFI II: Comparison of the ABSORB™ Everolimus Eluting Bioresorbable Vascular Scaffold System With a Drug- Eluting Metal Stent (Xience™) in Acute ST-Elevation Myocardial Infarction; ISAR-Absorb MI: Intracoronary Scaffold Assessment a Randomised Evaluation of Absorb in Myocardial Infarction. EES: everolimus-eluting stent; (N)STEMI: (Non) ST-segment elevation myocardial infarction

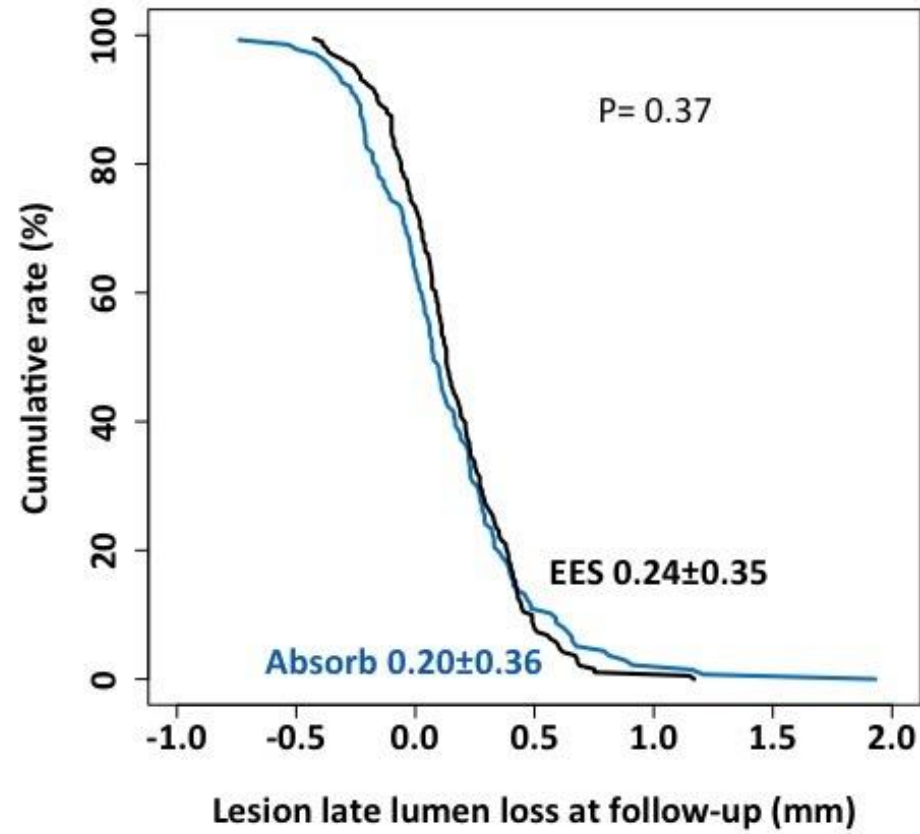


**S-Figure 1.**

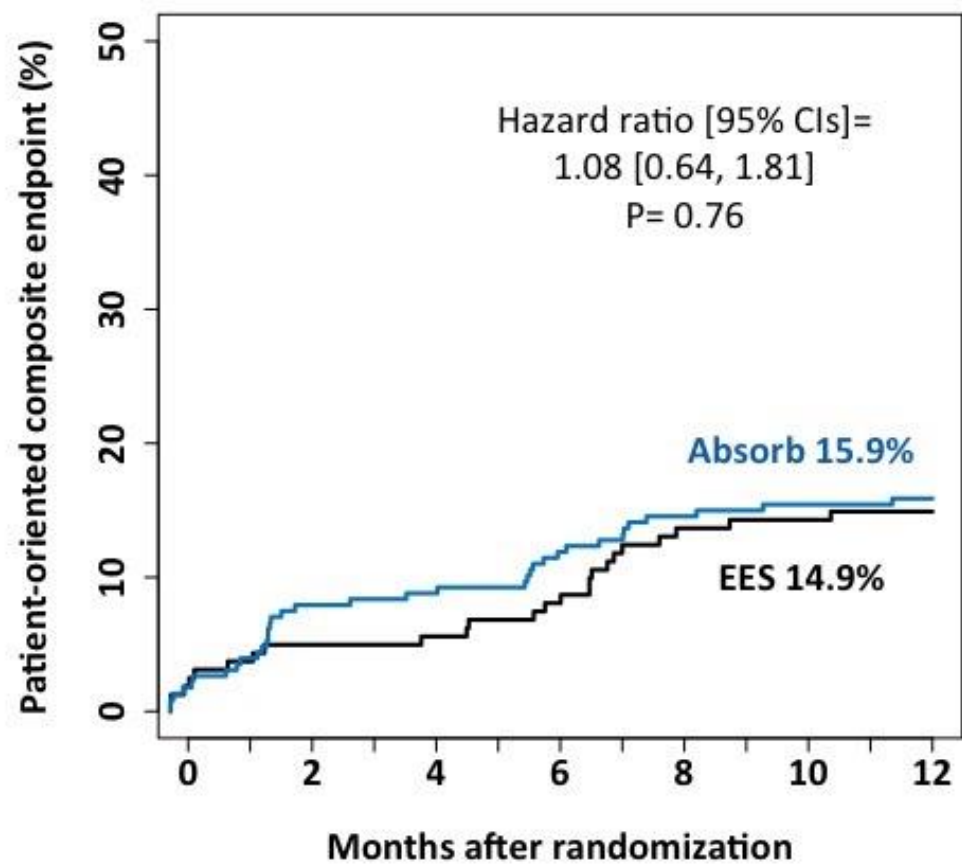
**Supplementary Figure 2.** Main secondary outcomes.

**A) Lesion late lumen loss at 6- to 8-month angiographic follow-up:** cumulative frequency distribution for lesion late lumen loss at follow-up angiography. **B) Patient-oriented composite endpoint** and **C) Target lesion revascularisation:** survival analysis curves for the composite of death, any myocardial infarction and all revascularisation. P-values are derived from Cox proportional hazards models. Other abbreviations are as in Supplementary Figure 1.

S-Figure 2A.

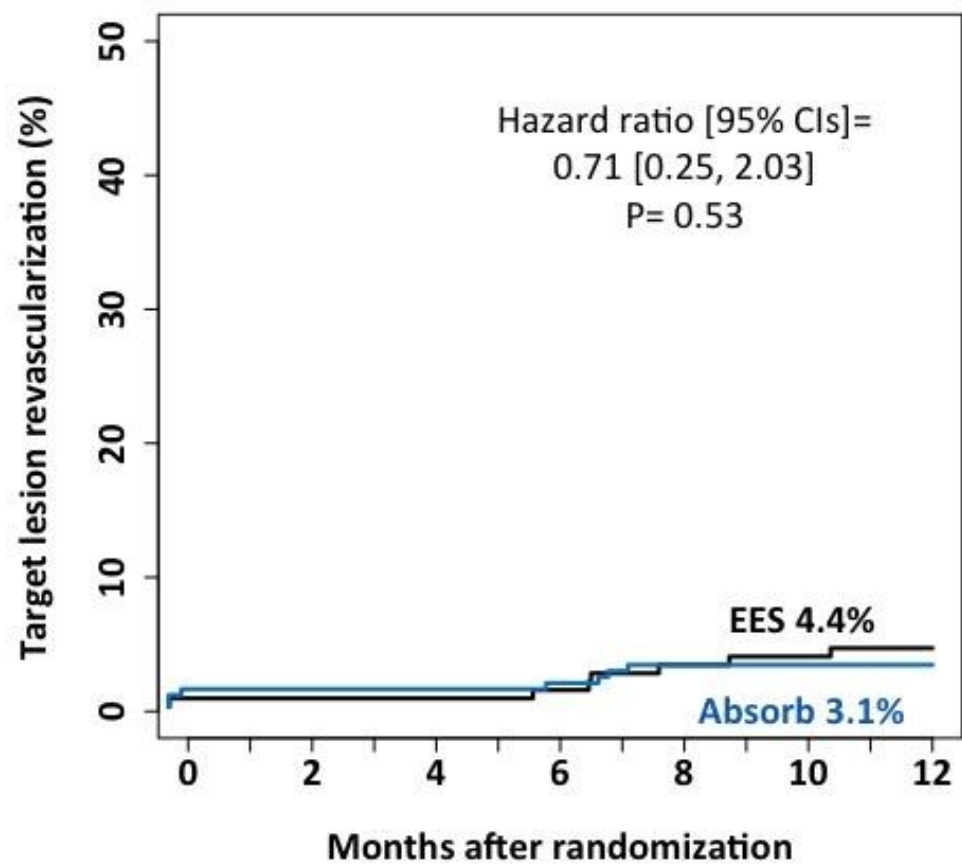


S-Figure 2B.



Patients at risk	Absorb	227	209	207	201	193	191	191
	EES	161	153	152	148	139	138	137

S-Figure 2C.



Patients at risk	Absorb	227	221	220	219	215	214	214
	EES	161	159	159	158	155	154	153

**Supplementary Table 1. Subgroup analysis for primary angiographic and main secondary clinical outcomes.**

	Lesion diameter stenosis			DOCE		
	Mean difference [95% CI]	<i>p</i> -value	<i>p</i> -value <sub>int</sub>	Hazard ratio [95% CI]	<i>p</i> -value	<i>p</i> -value <sub>int</sub>
	Absorb versus EES			Absorb versus EES		
<b>Trial</b>			<b>0.002</b>			0.43
ISAR-Absorb MI	-5.6 [-9.62, -1.67]	0.006		0.65 [0.23, 1.87]		
ABSORB STEMI TROFI II	1.4 [-1.09, 3.85]	0.27		1.37 [0.31, 6.08]		
<b>Age</b>			0.49			0.24
Young (≤59 years)	-0.8 [-4.04, 2.44]	0.63		0.50 [0.11, 2.21]	0.38	
Old (>59 years)	-0.7 [-4.08, 2.81]	0.72		1.35 [0.45, 4.00]	0.59	
<b>Gender</b>			0.37			0.49
Female	-5.2 [-10.90, 0.61]	0.08		0.47 [0.08, 2.70]	0.41	
Male	-0.1 [-2.58, 2.54]	0.98		1.19 [0.43, 3.29]	0.73	
<b>Diabetes status</b>			0.50			0.15
Diabetic	-2.3 [-8.72, 3.94]	0.45		3.61 [0.50, 26.13]	0.23	
Non-diabetic	-0.4 [-2.81, 2.04]	0.75		0.63 [0.21, 1.86]	0.41	
<b>Thienopyridines at discharge</b>			0.99			0.66
Prasugrel/ticagrelor	-1 [-3.42, 1.50]	0.44		1.18 [0.48, 2.88]	0.71	
Clopidogrel	-1.2 [-7.62, 5.39]	0.72		N/A	0.92	
<b>TIMI 0, pre PCI</b>			0.26			0.57
Yes	-2.2 [-4.94, 0.65]	0.13		1.11 [0.35, 3.51]	0.85	
No	1.2 [-2.79, 5.32]	0.54		0.74 [0.20, 2.77]	0.66	
<b>Thrombus aspiration</b>			0.56			0.51
Yes	-0.7 [-3.37, 2.14]	0.66		1.32 [0.32, 5.51]	0.70	

No	-1.7 [-5.68, 2.32]	0.41	0.72 [0.24, 2.15]	0.56
<b>Predilation</b>			0.06	0.73
Yes	-2.8 [-5.82, 0.21]	0.07	0.79 [0.32, 1.96]	0.61
No	0.9 [-2.42, 4.28]	0.58	1.18 [0.07, 18.85]	0.90
<b>Post-dilation</b>			0.19	0.23
Yes	-3.8 [-8.20, 0.70]	0.10	0.50 [0.16, 1.61]	0.25
No	-0.3 [-2.84, 2.20]	0.80	1.58 [0.45, 5.55]	0.48
<b>Total stented length</b>			0.82	0.69
Short ( $\leq 23$ mm)	-0.2 [-3.18, 2.80]	0.90	1.21 [0.29, 5.07]	0.79
Long ( $> 23$ mm)	-1.7 [-5.45, 1.99]	0.36	0.98 [0.31, 3.10]	0.98

$p$ -value<sub>int</sub>:  $p$ -value for interaction. ABSORB STEMI TROFI II: Comparison of the ABSORB™ Everolimus Eluting Bioresorbable Vascular Scaffold System With a Drug- Eluting Metal Stent (Xience™) in Acute ST-Elevation Myocardial Infarction; DOCE: device-oriented clinical endpoint; EES: everolimus-eluting stent; ISAR-Absorb MI: Intracoronary Scaffold Assessment a Randomised Evaluation of Absorb in Myocardial Infarction; PCI: percutaneous coronary intervention; TIMI: Thrombolysis in Myocardial Infarction